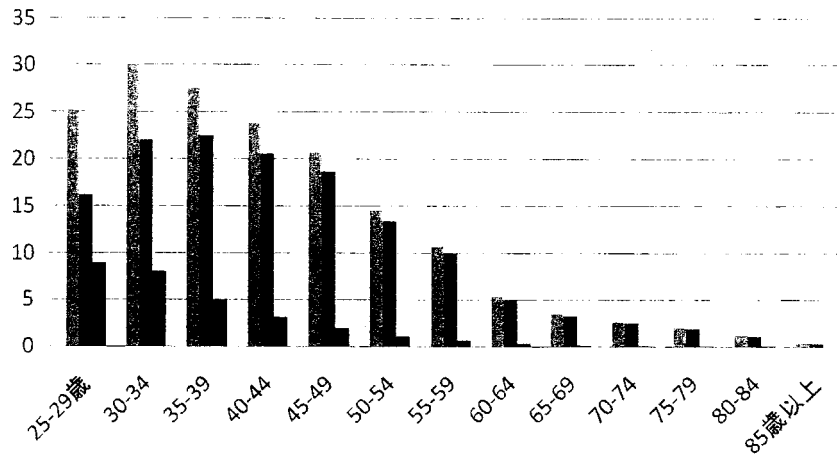
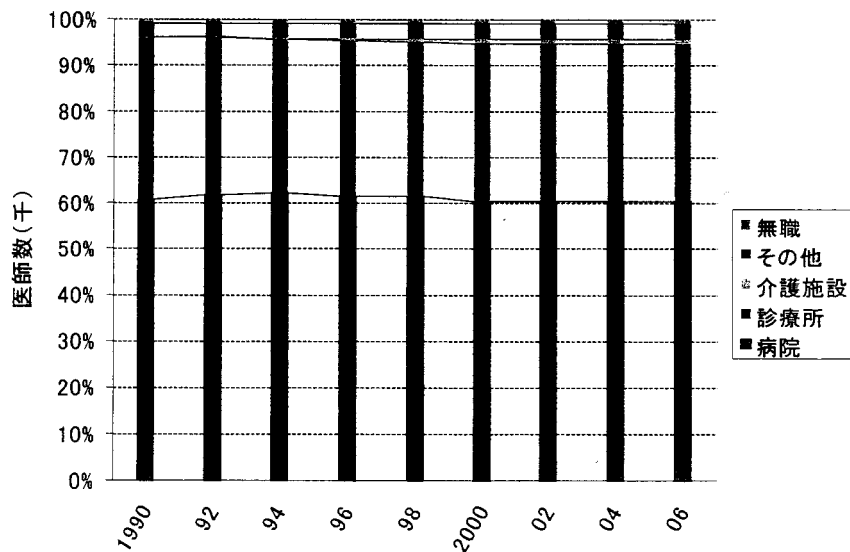


病院勤務医師の年齢分布(千人)



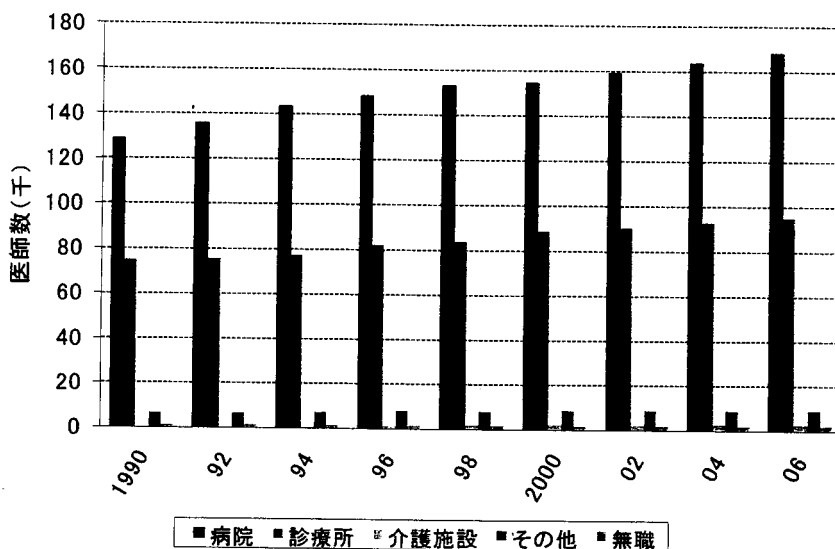
(平成18年医師・歯科医師・薬剤師調査)

業務種別医師数割合の推移



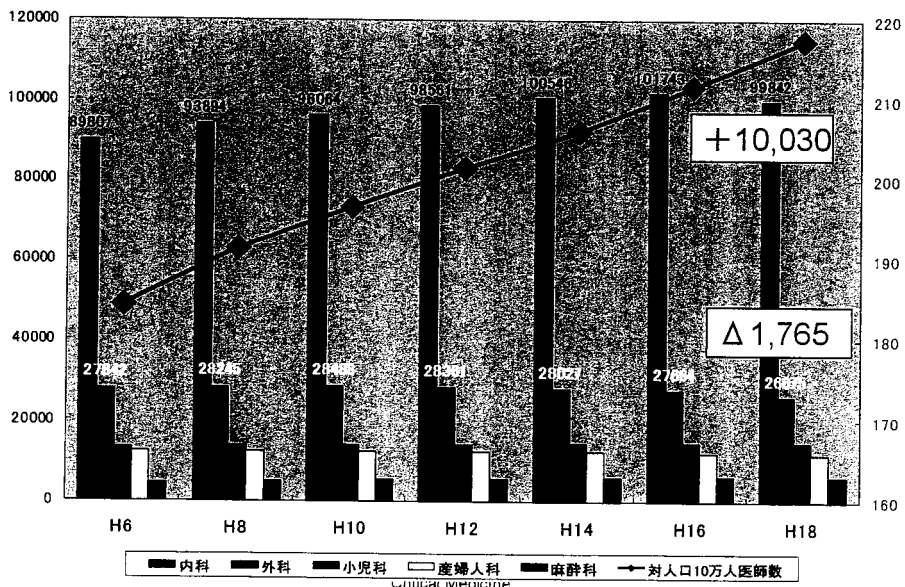
(平成18年医師・歯科医師・薬剤師調査)

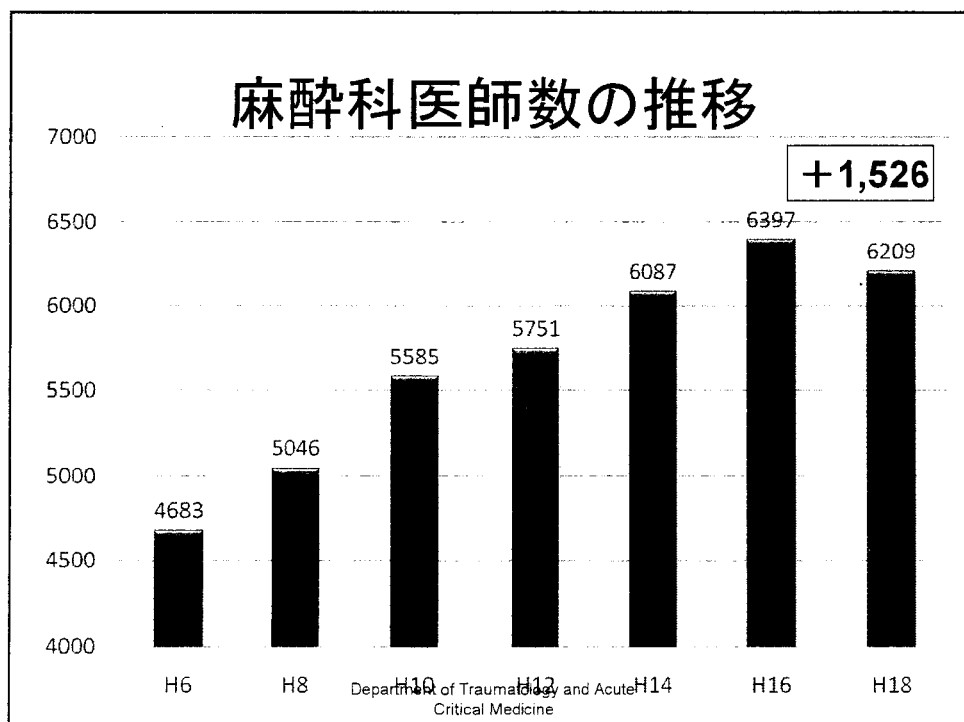
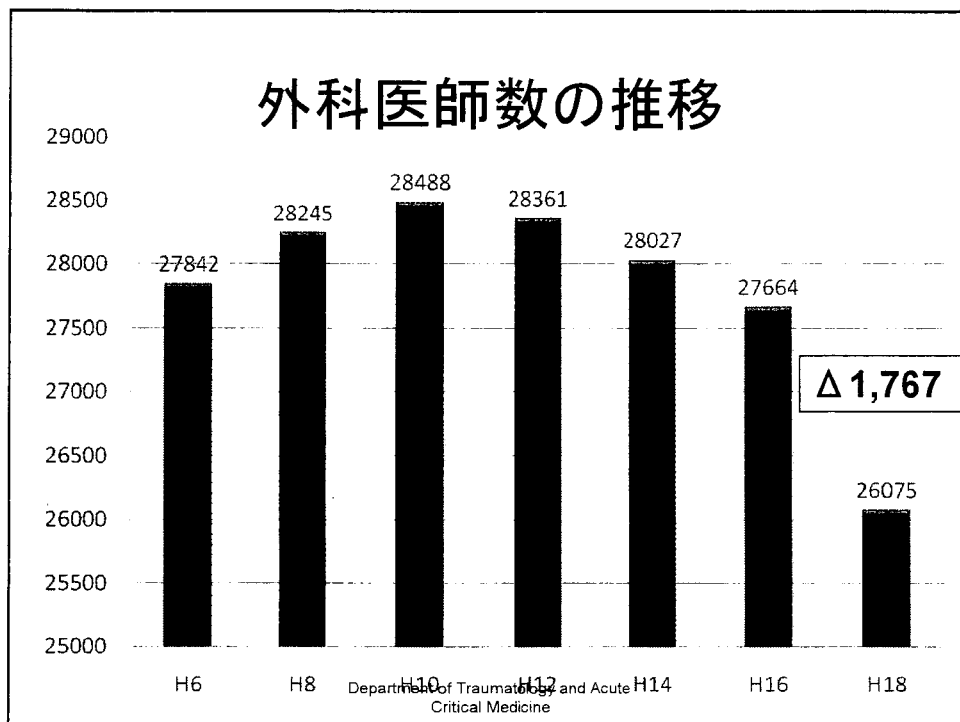
業務種別医師数の推移

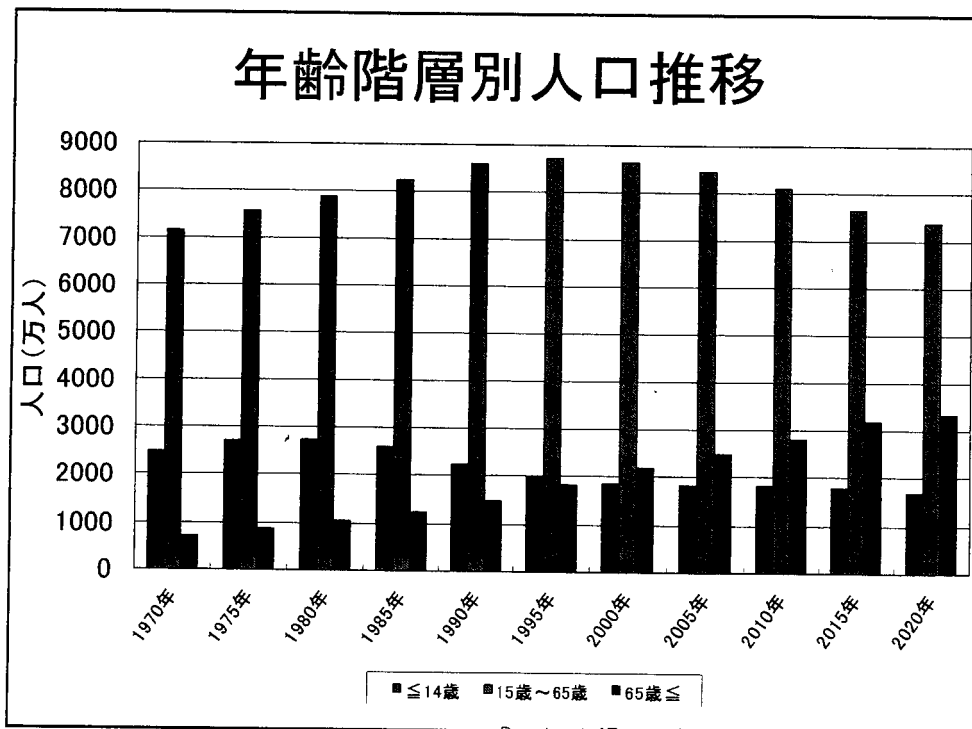
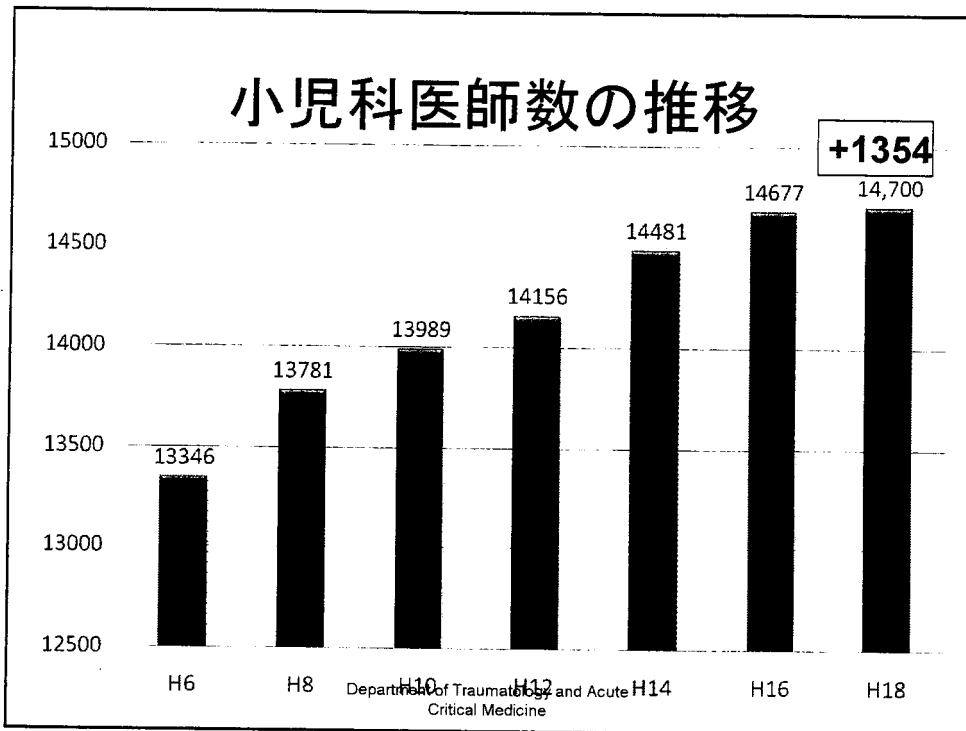


Critical Medicine (平成18年医師・歯科医師・薬剤師調査)

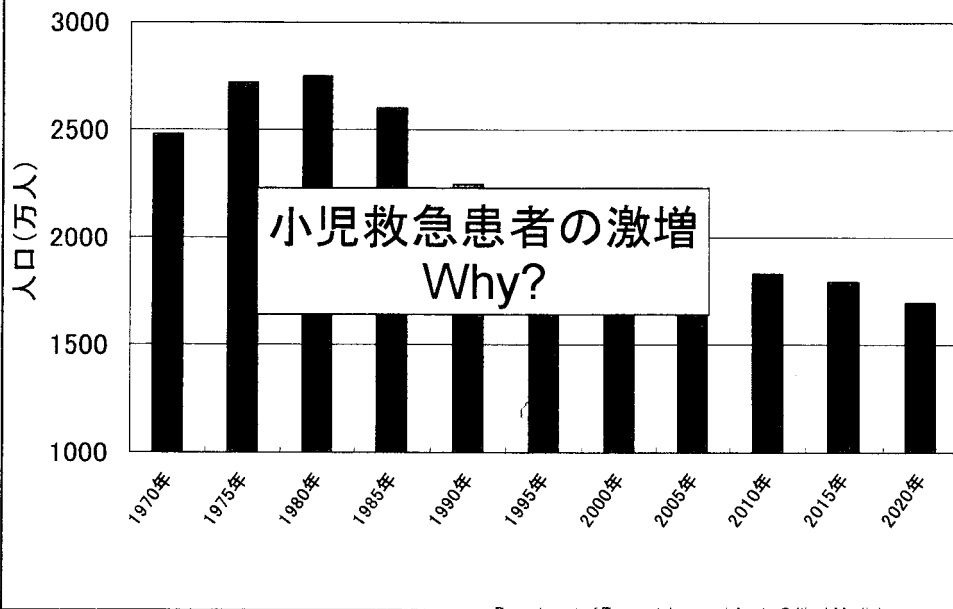
医師数の推移



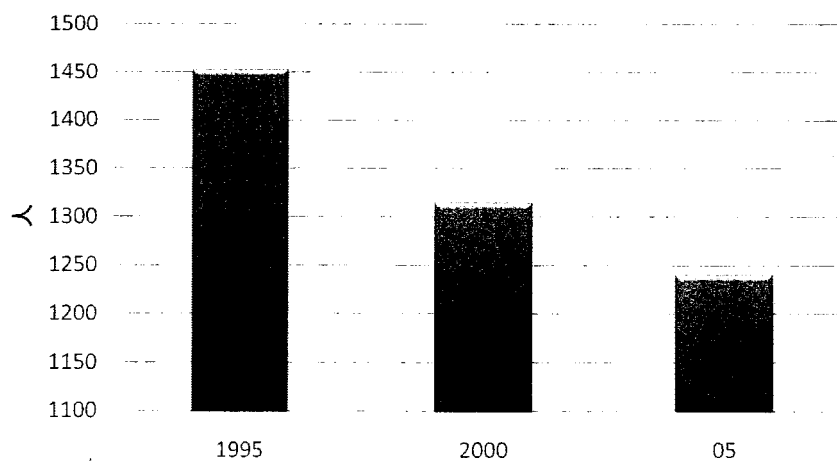




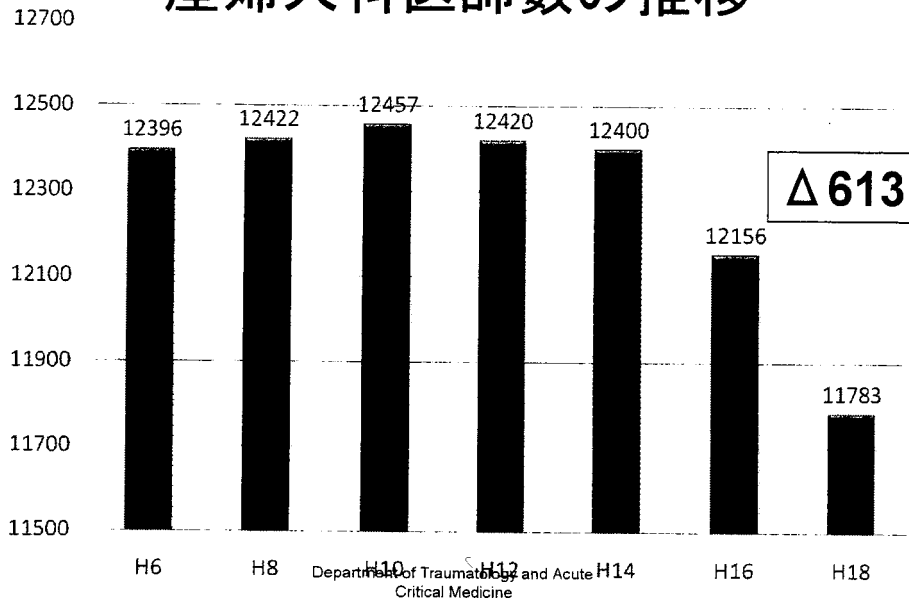
≦14歳人口の推移



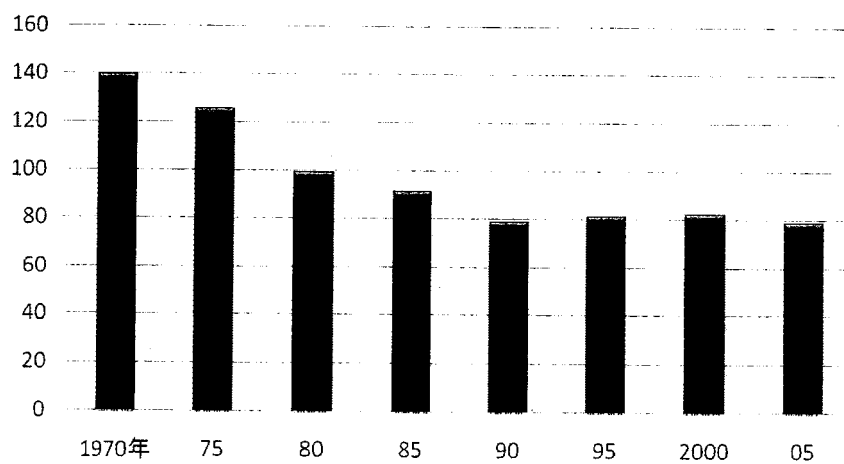
≦14歳対象人口／小児科医の推移



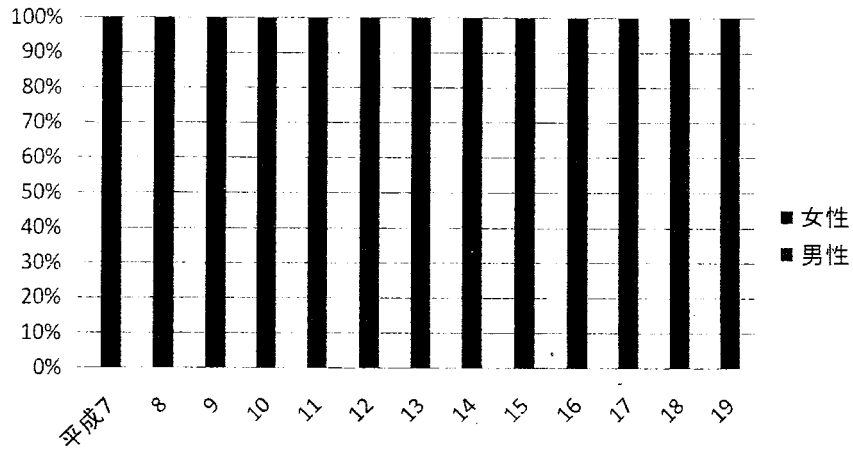
産婦人科医師数の推移



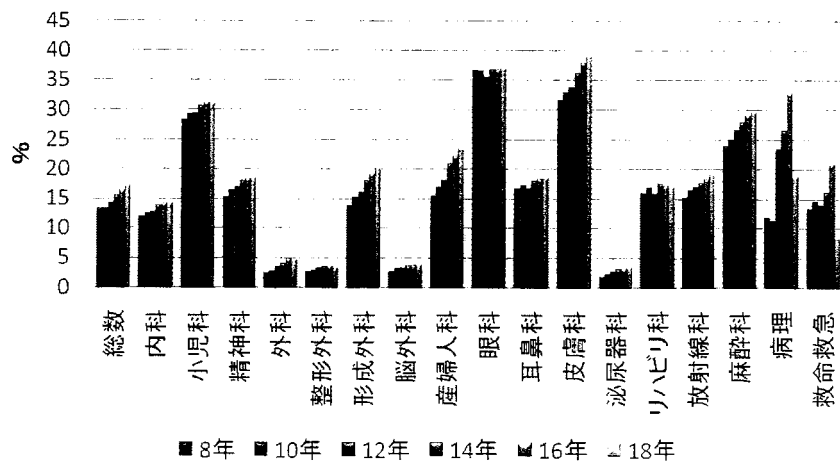
出生数／産婦人科医の推移



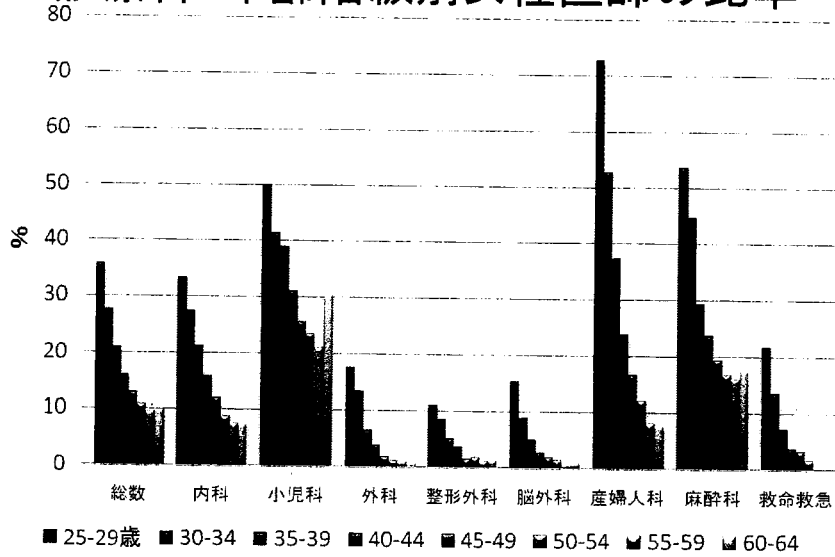
医師国家試験合格者の男女比の推移



診療科別女性医師の割合の推移 (%)

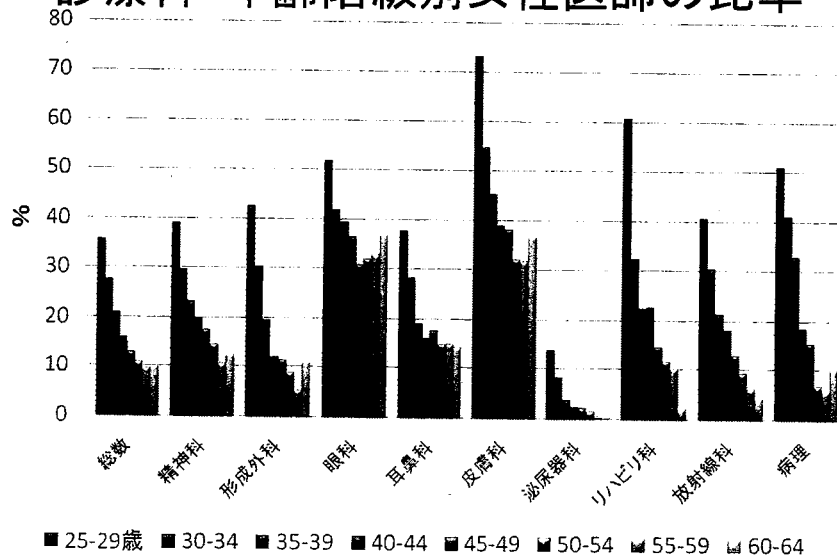


診療科・年齢階級別女性医師の比率



(平成18年医師・歯科医師・薬剤師調査)

診療科・年齢階級別女性医師の比率



(平成18年医師・歯科医師・薬剤師調査)