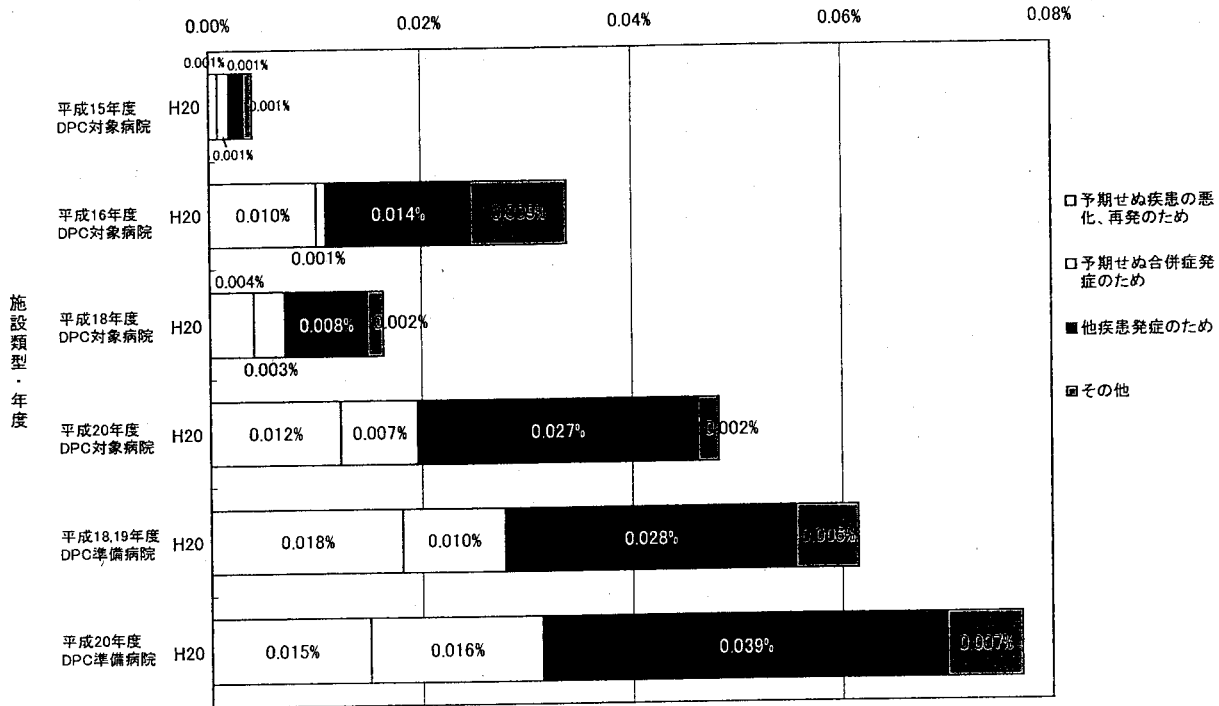
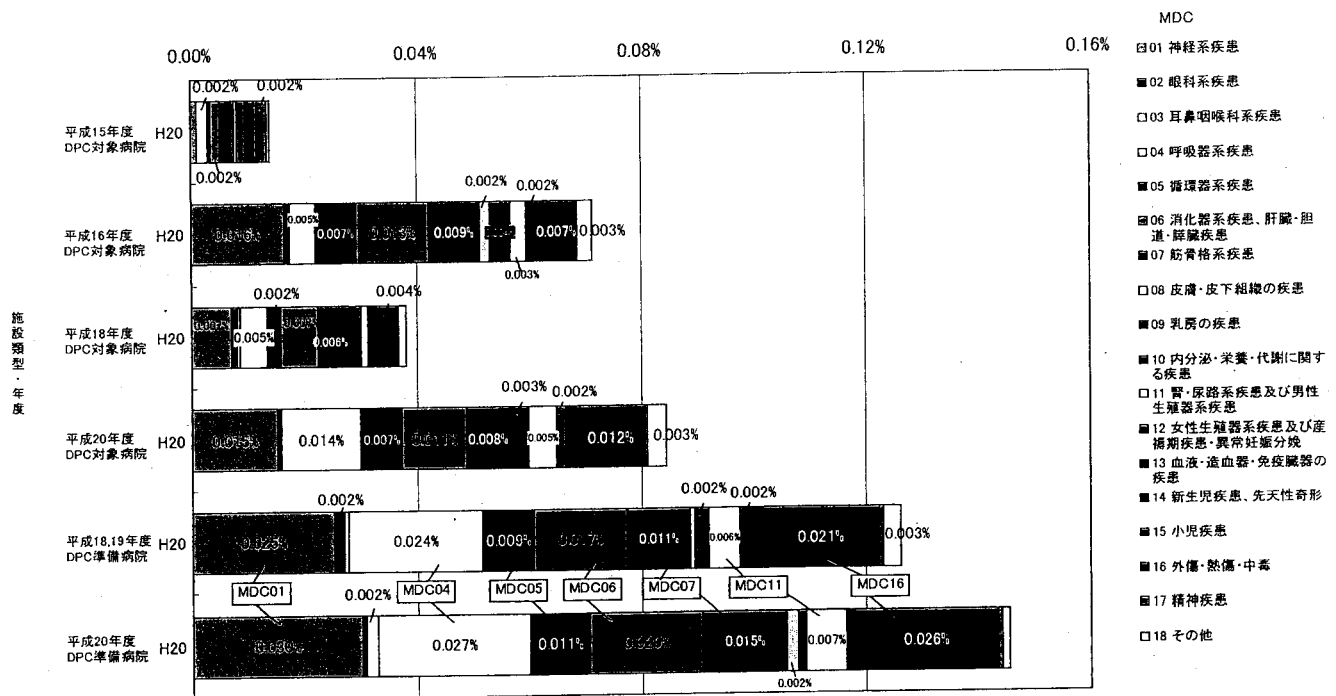


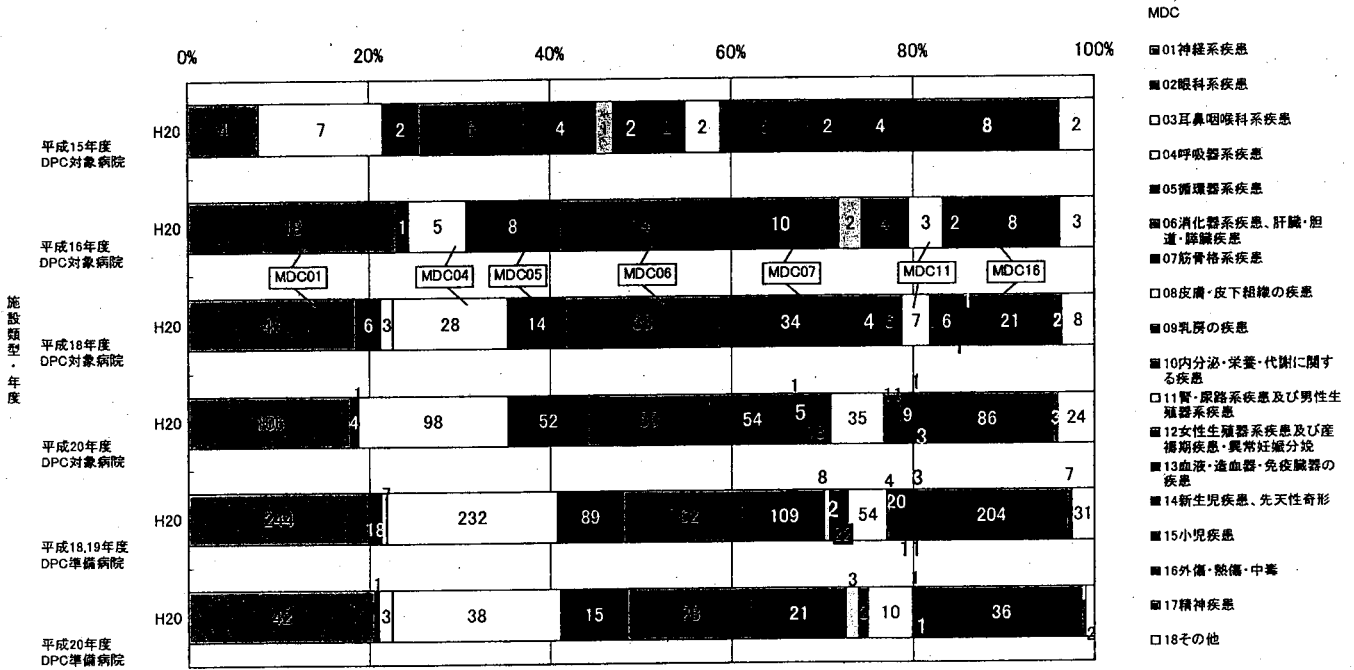
図表4-⑤ 予期せぬ再転棟における理由の内訳(退院症例に対する再転棟数比率)



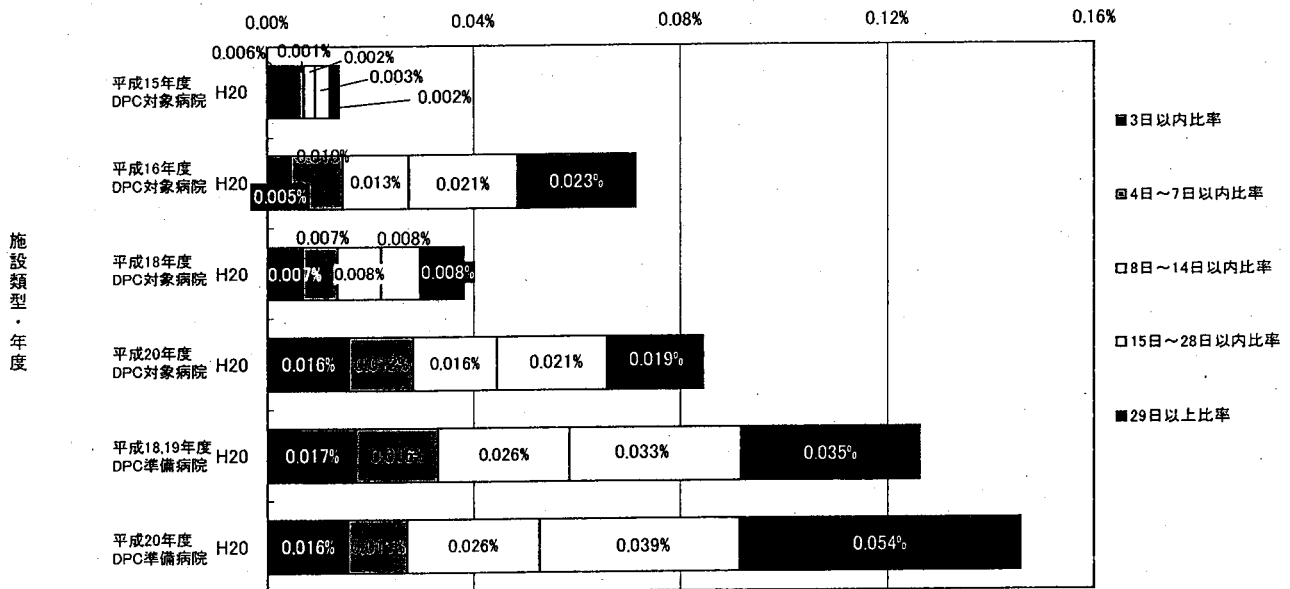
図表4-⑥-1 MDC別・退院症例に対する再転棟比率



図表4-⑥-2 MDC別・再転棟割合



図表4-⑦ 前回一般病棟から今回一般病棟への転棟期間別・退院症例に対する再転棟比率











図表5 年度別・再入院率

Table with 8 columns: 施設類型 (Facility Type), 施設名 (Facility Name), H14再入院率 (Re-admission Rate H14), H15再入院率 (Re-admission Rate H15), H16再入院率 (Re-admission Rate H16), H17再入院率 (Re-admission Rate H17), H18再入院率 (Re-admission Rate H18), H19再入院率 (Re-admission Rate H19). Contains data for various facilities from FY13 to FY19.

図表6 年度別・再入院率

Table with 8 columns: 施設類型 (Facility Type), 施設名 (Facility Name), H14再入院率 (Re-admission Rate H14), H15再入院率 (Re-admission Rate H15), H16再入院率 (Re-admission Rate H16), H17再入院率 (Re-admission Rate H17), H18再入院率 (Re-admission Rate H18), H19再入院率 (Re-admission Rate H19). Contains data for various facilities from FY13 to FY19, continuing from the previous table.