

諸外国の状況

23

重症度の各国比較

死亡率

Country – Pays	% of hospitalized cases with no co-morbidity – % de cas hospitalisés sans comorbidité	% of hospitalized cases who are pregnant – % de cas de femmes enceintes hospitalisées	Cumulative number of hospitalizations – Nombre cumulé d'hospitalisations	Incidence of hospitalization (per 100 000 population) – Incidence de l'hospitalisation (pour 100 000 habitants)	Median age of hospitalized cases (years) – Age médian des cas hospitalisés (ans)	Rate of ICU admission or hospitalization – Taux d'admission dans les services de soins intensifs ou d'hospitalisations	Number of deaths – Nombre de décès	Mortality rate (deaths per million population) – Taux de mortalité (nombre de décès par million d'habitants)
Northern hemisphere temperate zone – Zone tempérée de l'hémisphère Nord								
Canada	38	5	1 999	5.8	24	0.20	95	2.8
Japan – Japon	63	0.3	3 746	2.9	8	–	35	0.2
United Kingdom – Royaume-Uni	43	7.5	–	–	15-24	–	135	2.2
Mexico – Mexique	–	–	10 337	9.3	–	–	328	2.9
United States – Etats-Unis d'Amérique	27	7	9 079	3.0	21	0.25	1 004	3.3
Southern hemisphere temperate zone – Zone tempérée de l'hémisphère Sud								
South Africa – Afrique du Sud	–	–	–	–	–	–	91	1.8
Argentina – Argentine	47	–	9 974	24.5	20	0.13	593	14.6
Australia – Australie	51	6	4 844	22.5	31	0.13	186	8.6
Brazil – Brésil	79	8.3	17 219	8.8	26	–	1 368	7.0
Chile – Chili	47	2.4	1 852	10.8	32	0.39	140	8.1
New Zealand – Nouvelle-Zélande	–	6.5	1 001	23.3	20-29	0.12	19	4.4

^a Adapted in part from Baker MG, Kelly H, Wilson N. Pandemic H1N1 influenza lessons from the southern hemisphere. *Eurosurveillance*, 2009, 14(42):pi=19370. – En partie d'après Baker MG, Kelly H, Wilson N. Pandemic H1N1 influenza lessons from the southern hemisphere. *Eurosurveillance*, 2009, 14(42): pi=19370.

(2009年11月6日時点)

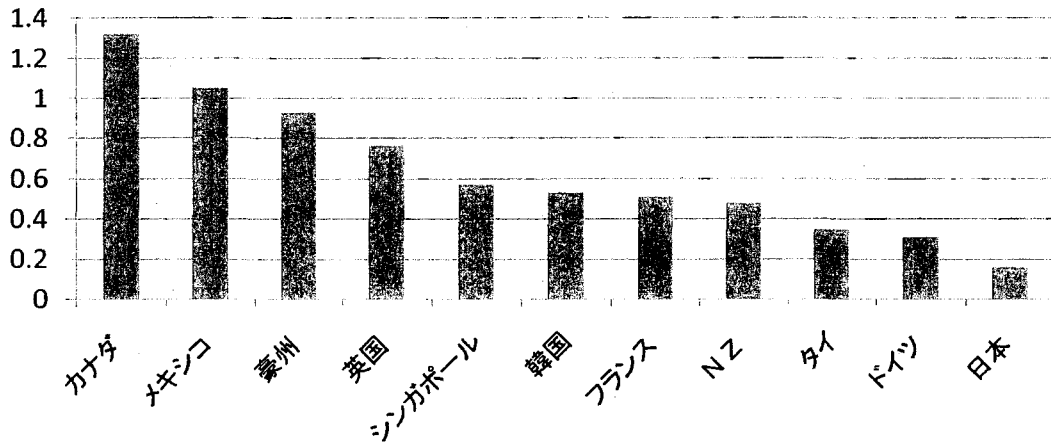
出典: Weekly Epidemiological Record (WER), 13 November 2009

24

新型インフルエンザの死亡率の各国比較

	米国	カナダ	メキシコ	豪州	英国	シンガポール	韓国	フランス	NZ	タイ	ドイツ	日本
集計日	2/13	4/10	3/12	3/12	3/14	4月末	5/14	—	3/21	—	5/18	5/26
死亡数	推計 12,000	428	1,111	191	457	25	257	312	20	225	255	199
人口10万対死亡率	(3.96)	1.32	1.05	0.93	0.76	0.57	0.53	0.51	0.48	0.35	0.31	0.16
PCR	—	全例	—	—	—	全例	全例	260名はPCRで確定	—	全例	—	184名はPCRで確定

※尚、各国の死亡数に関してはそれぞれ定義が異なり、一義的に比較対象とならないことに留意が必要。



出典：各国政府・WHOホームページから厚生労働省で作成

新型インフルエンザによる死亡率の各国比較(出典)

	集計日	集計数	出典(URL)	死亡率 人口10万対	計算根拠となる国別総人口 *WHO Statistic Information System http://apps.who.int/whosis/data/Search.jsp
米国	2/13	12,000 (推計)	"CDC Estimates of 2009 H1N1 cases and related hospitalizations and deaths from april 2009-february 13, 2010, by Age" http://www.cdc.gov/h1n1flu/pdf/Estimates5_Short%20Table.pdf	3.96	302,841,000 (2006年)
カナダ	4/10	429	Weekly and cumulative numbers of hospitalized cases, ICU admissions and deaths among Pandemic H1N1 2009 confirmed cases, Canada, April 12, 2009 to March 13, 2010 ¹ http://www.phac-aspc.gc.ca/fluwatch/09-10/w10_10/index-eng.php	1.32	32,577,000 (2006年)
メキシコ	3/12	1,111	Situación actual de la epidemia http://portal.salud.gob.mx/sites/salud/descargas/pdf/influenza/situacion_actual_epidemia_120310.pdf	1.05	105,342,000 (2006年)
豪州	3/12	191	"AUSTRALIAN INFLUENZA SURVEILLANCE REPORT No. 13, 2010, REPORTING PERIOD: 6 March 2010 – 12 March 2010" http://www.healthemergency.gov.au/internet/healthemergency/publishing.nsf/Content/EB136394E79CA5E2CA2576A50010783A/\$file/ozflu-no10-2010.pdf	0.93	20,530,000 (2006年)
英国	3/14	457	HPA Weekly national Influenza Report. 18 March 2010 http://www.hpa.nhs.uk/web/HPAwebFile/HPAweb_C/1267551284022	0.76	60,512,000 (2006年)
シンガポール	4月末	25	シンガポール政府からの回答	0.57	4,382,000 (2006年)
韓国	5/14	257	韓国政府からの回答	0.53	48,050,000 (2006年)
フランス	4/20	312	Bulletin épidémiologique grippe, Point de situation au 16 mars 2010 http://www.invs.sante.fr/display/?doc=surveillance/grippe_dossier/index_h1n1.htm	0.51	61,330,000 (2006年)
NZ	3/21	20	Influenza weekly update, 15-21 March 2010 http://www.surv.esr.cri.nz/PDF_surveillance/Virology/FluWeekRpt/2010/FluWeekRpt201011.pdf	0.48	4,140,000 (2006年)
タイ	—	225	タイ政府からの回答	0.35	63,444,000 (2006年)
ドイツ	5/18	255	Arbeitsgemeinschaft Influenza http://influenza.rki.de/Default.aspx	0.31	82,641,000 (2006年)
日本	5/26	199	日本におけるインフルエンザ(A(H1N1))の死亡者の年齢別内訳・死亡例まとめ http://www.mhlw.go.jp/bunya/kenkou/kekaku-kansenshou04/rireki/100325-03.html	0.16	127,953,000 (2006年)

パンデミックインフルエンザ患者の年齢

最も患者数が多いのは若い年齢層 年齢分布はその国の年齢ピラミッドに相同

- 罹患率が最も高いのは10代後半～若年成人
 - 年齢中央値 12-28 才
- 入院率が最も高いのは5才以下の小児
 - 他の年齢層に比べ少なくとも2倍の入院率
 - 人口分布を反映しているので「実数」はより年齢の高い群より少ない
 - 年齢中央値 20-36 才
- 死亡率が最も高いは 50 - 60 才
 - 年齢中央値 35-51 才

重症度とともに年齢中央値が上がる

27

出典:WHO 進藤 奈邦子特別ゲスト作成資料より

各国の確定患者数(年齢階級別)

Casos confirmados y defunciones por grupos de edad
(41,920 casos confirmados y 260 defunciones)

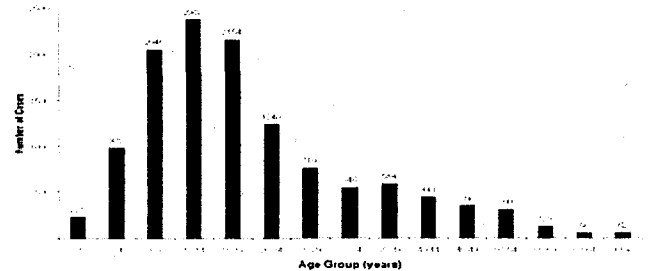
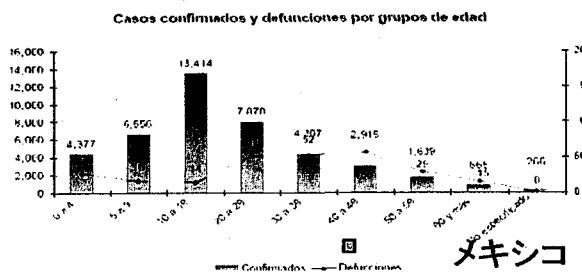


Figure 2: Number of laboratory confirmed pandemic influenza A (H1N1) 2009 cases by age group, South Africa, updated 19 October 2009 (n=12 378, 116 unknown age)

南アフリカ

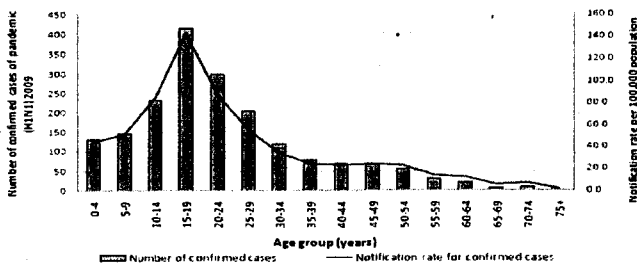
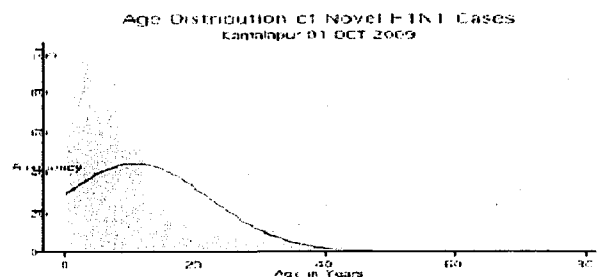


Figure 8: Cumulative number of confirmed cases of pandemic (H1N1) 2009 and notification rate per 100,000 population by age group (years)
Source: ECDC

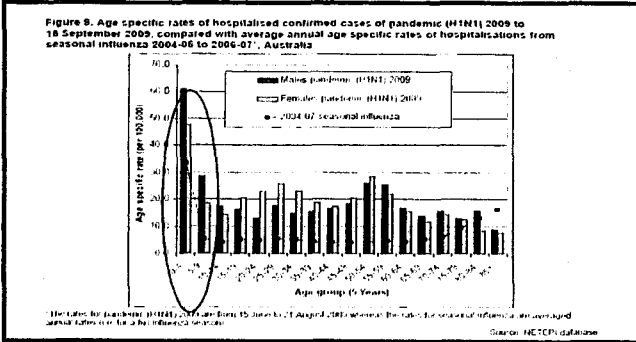
アイルランド



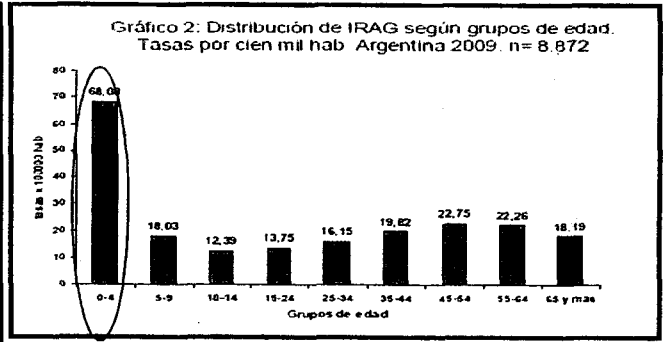
バングラデシュ

各国の入院率（年齢群別）①

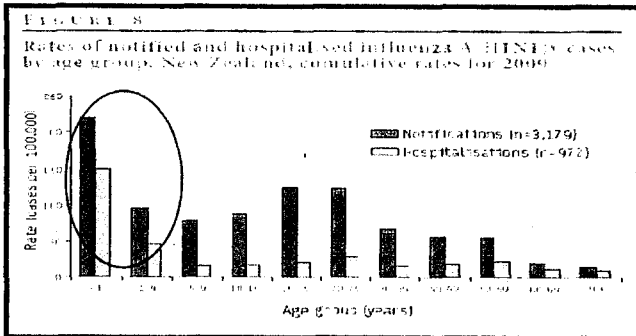
オーストラリア



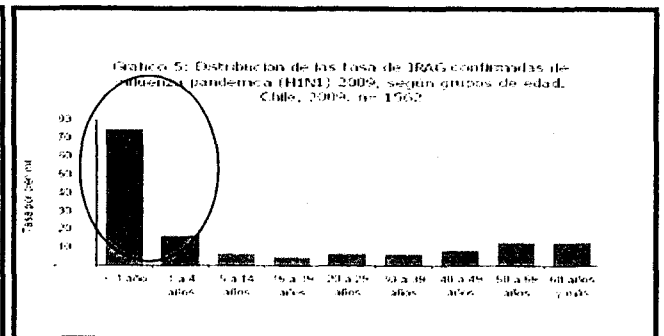
アルゼンチン



ニュージーランド



チリ



Source: Argentina MoH. http://www.msal.gov.ar/archivos/Informe_SE_39- ARG_COM11.pdf

Source: Chile MoH. <http://www.redsalud.gov.cl/portal/uri/itcm/74c581c26cc299e2c04001011017805.pdf>

Source: New Zealand: EUROSURVEILLANCE: 14(34): 1-6

Source: Australia Dept of Health. <http://www.healthemergency.gov.au/internet/healthemergency/publishing.nsf/Content/oz/Incurrent.htm>

出典:WHO 進藤奈邦子特別ゲスト作成資料より

各国の入院率（年齢群別）②

シンガポール

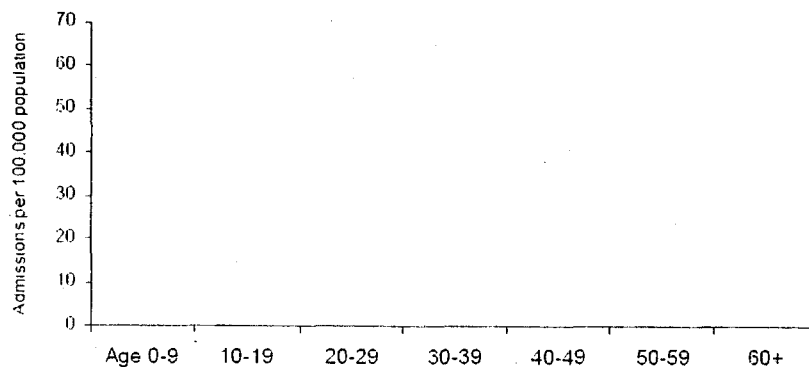


Fig. 5. Age-specific hospital admission rates (n = 1348 as of 28 September 2009).

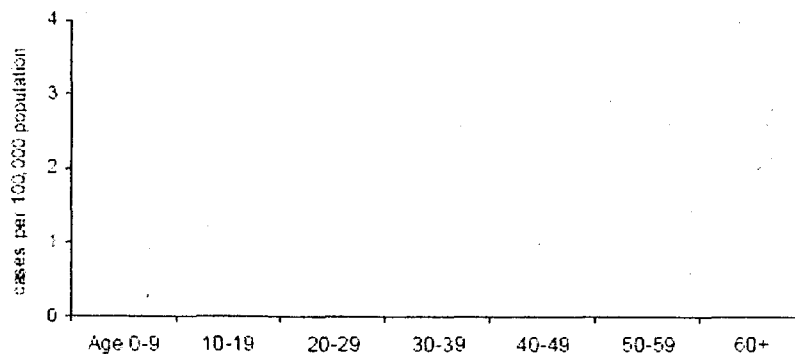
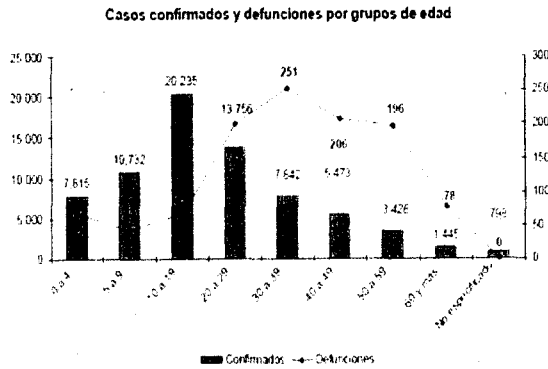


Fig. 6. Age-specific incidence of severe cases (n=92 as of 28 September 2009).

各国の死亡率(年齢群別)①

メキシコ

Casos confirmados y defunciones por grupos de edad
(71,525 casos confirmados y 1,111 defunciones)



FUENTE: Casos confirmados Base de datos COPE, Defunciones CONAMED

オーストラリア

Figure 14. Numbers of deaths among confirmed cases of pandemic influenza A(H1N1) 2009, compared with total laboratory confirmed pandemic (H1N1) 18 September 2009, Australia

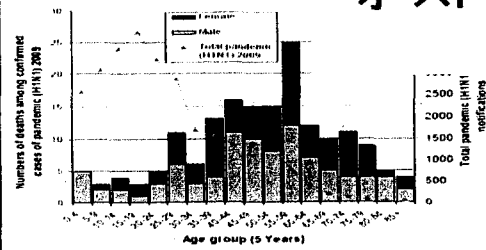
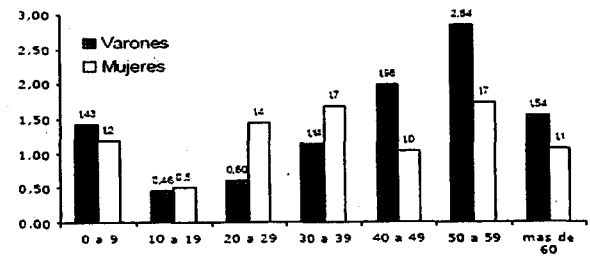


Gráfico 4: Distribución de fallecidos edad y sexo. Tasas por cien mil

アルゼンチン

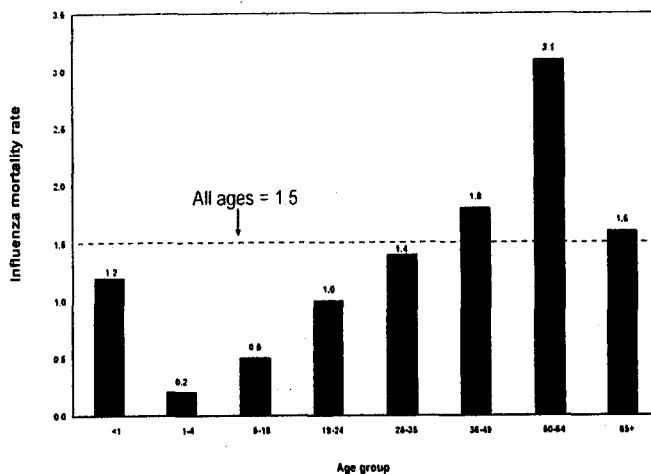


各国の死亡率(年齢群別)②

米国(カルフォルニア)

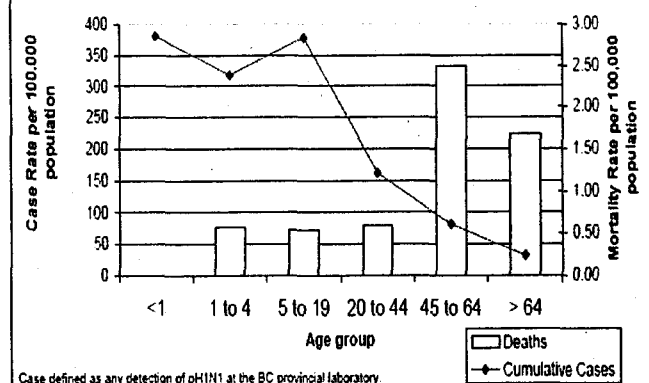


Age-specific mortality rate (per 100,000 population) of 2009 H1N1 influenza in California, reported April 23, 2009 - May 1, 2010



カナダ(ブリティッシュコロンビア)

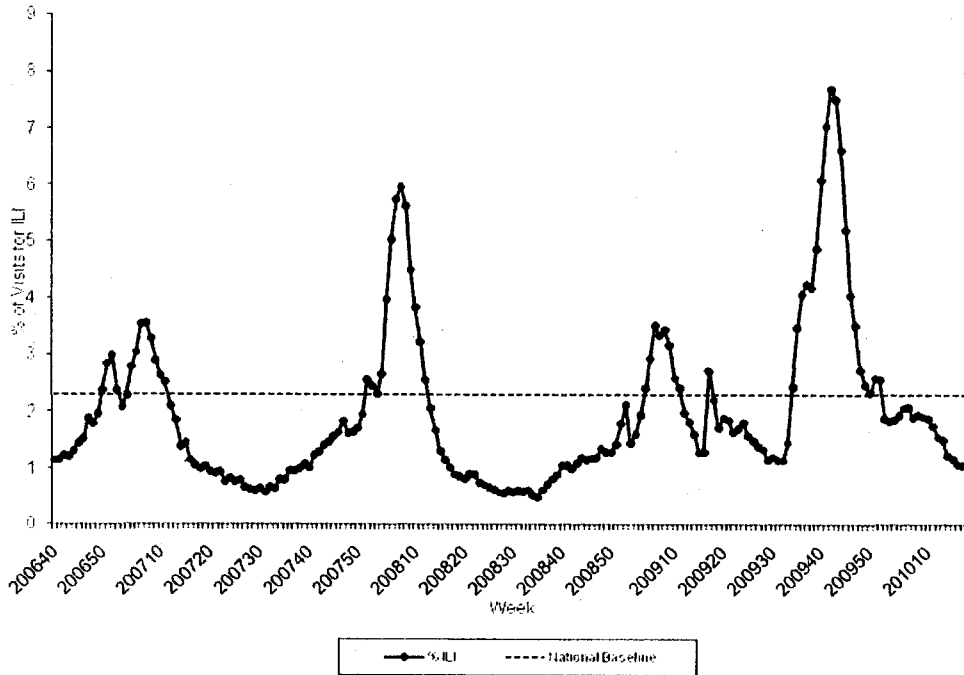
Cumulative Rate of pH1N1 Cases and Deaths by Age, per 100,000 Population, BC April 17, 2009 -February 25, 2010



アメリカ

Percentage of Visits for Influenza-like Illness (ILI) Reported by the U.S. Outpatient Influenza-like Illness Surveillance Network (ILINet), National Summary 2008-2009 and Previous Two Seasons

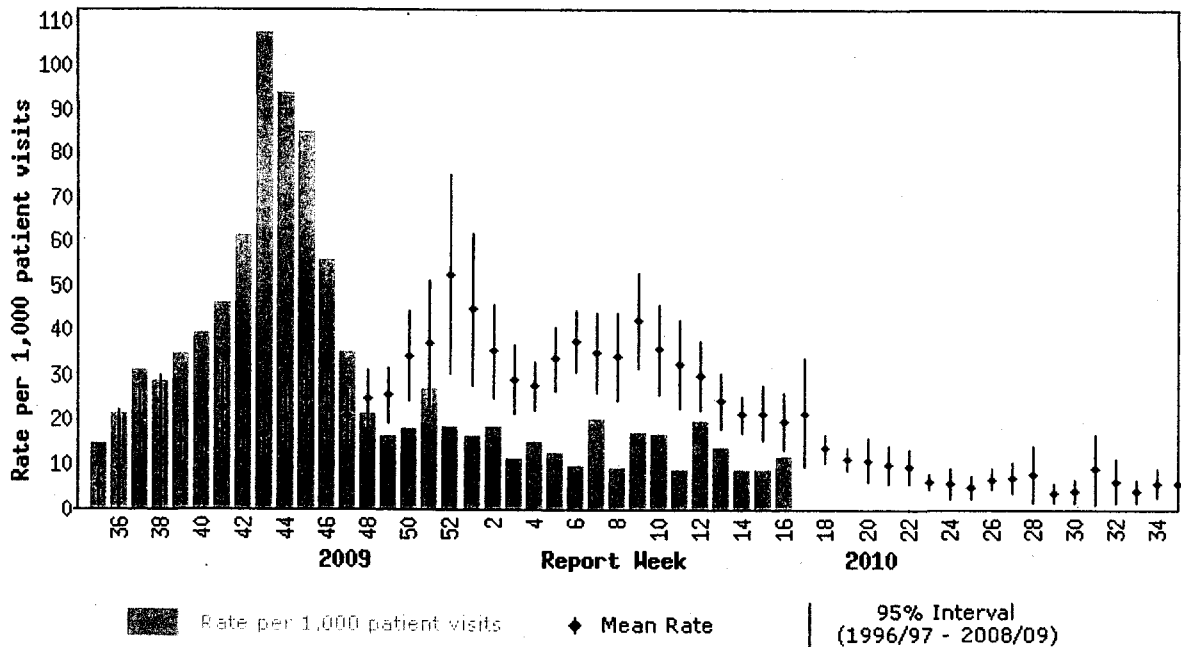
(Posted May 14, 2010, 1:00 PM ET, for Week Ending May 8, 2010)



33

カナダ

Influenza-like illness (ILI) consultation rates, Canada, by report week. 2009-2010 compared to 1996/97 through to 2008/09 seasons

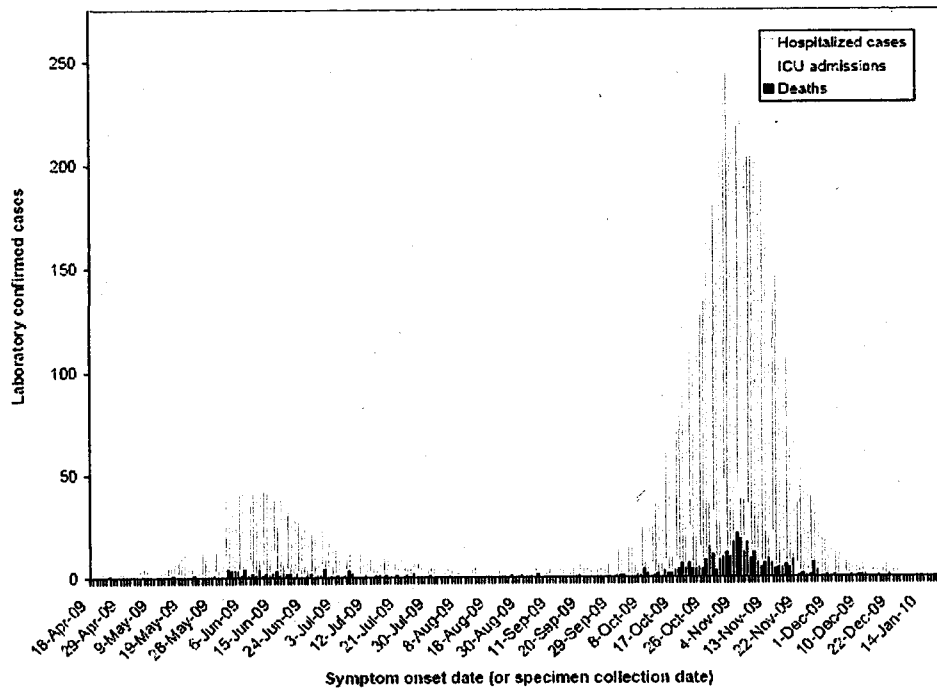


Note: No data available for mean rate in previous years for weeks 19 to 39 (1996-1997 through 2002-2003 seasons). Delays in the reporting of data may cause data to change retrospectively.

34

カナダ

Figure 1. Number of laboratory-confirmed pandemic H1N1 2009 hospitalized cases, ICU cases and deaths in Canada by date of onset (or specimen collection date), reported to the PHAC as of April 24, 2009†

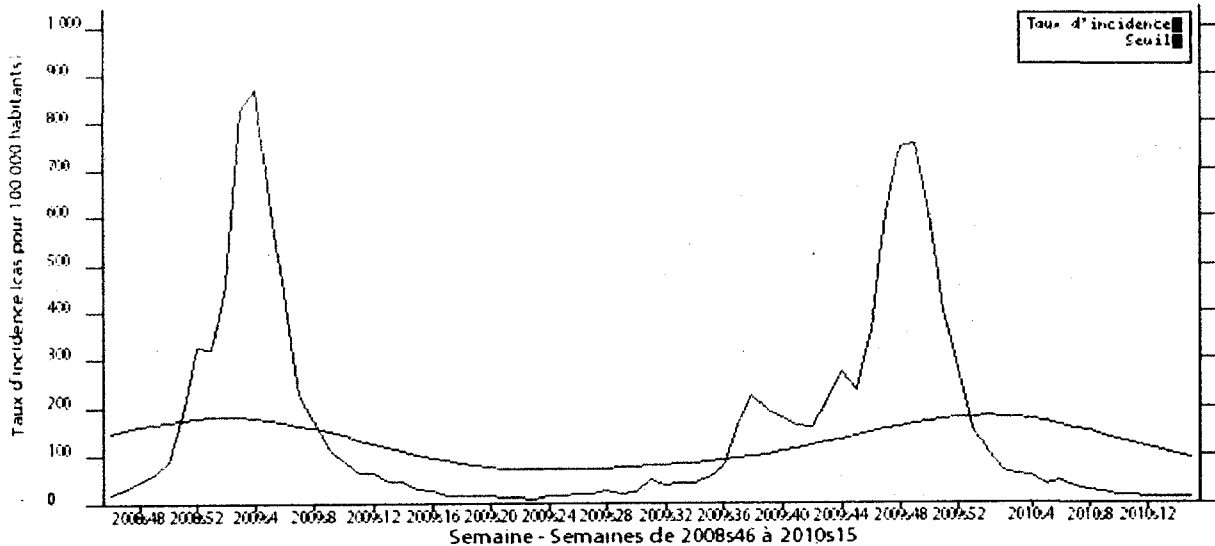


†Symptom onset date/specimen collection date was available for 99.1% of deaths, 97.2% of ICU cases and 97.8% of hospitalized cases for whom core information was available.

フランス

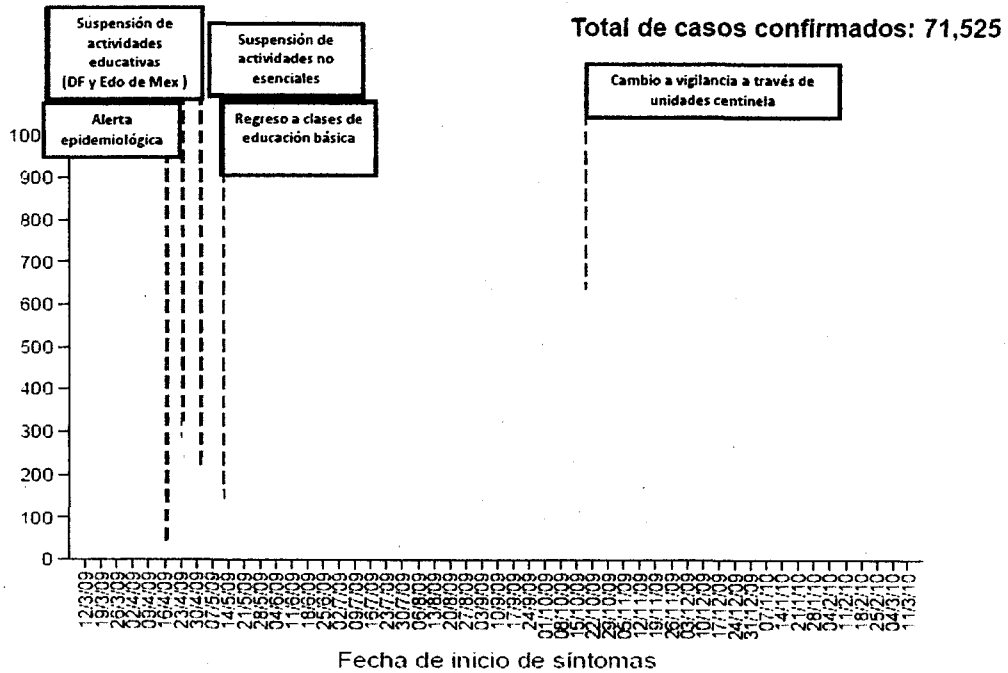
Weekly incidence rates of visits for influenza-like illness(per 100 000),France, week 46/2008 – week 15/2010, Sentinelles network

Réseau Sentinelles, Syndromes grippaux, France entière



メキシコ

SALUD

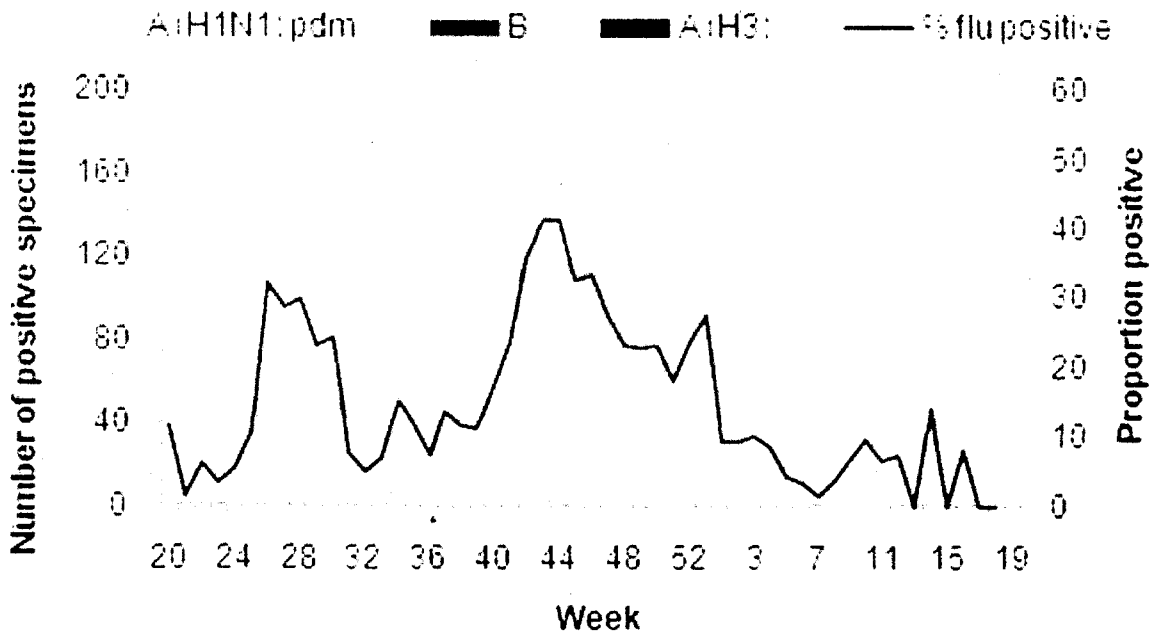


Fuente: Base de datos INDR.

37

イギリス

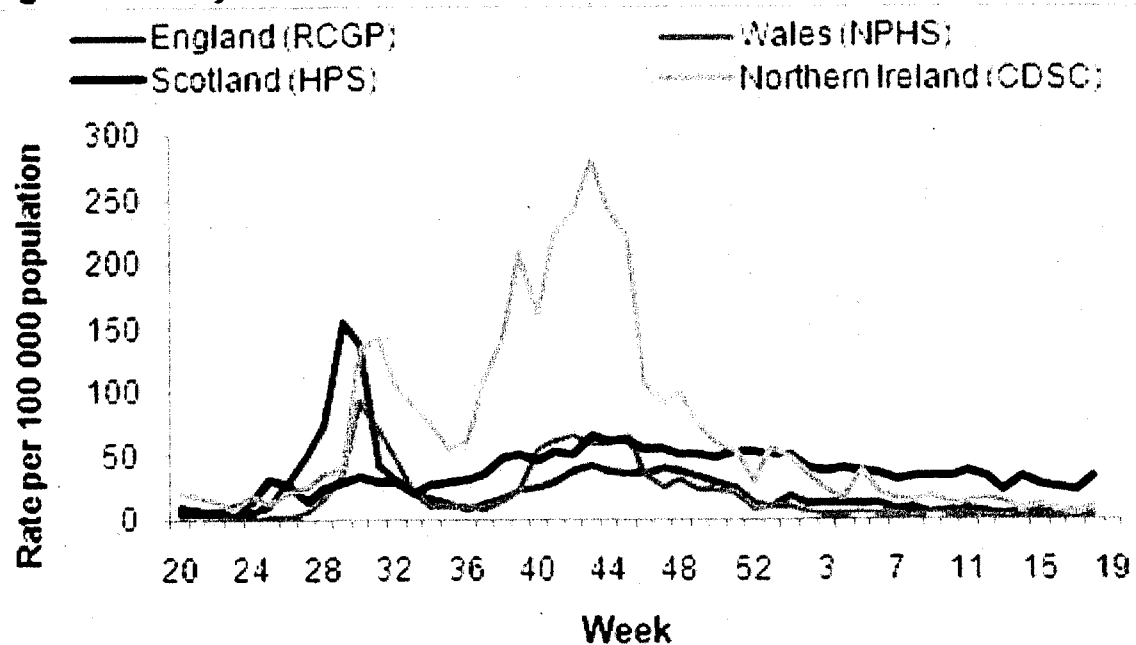
Figure 2: Weekly number and proportion of specimens collected through GP sentinel virological schemes positive for influenza (England only).



38

イギリス

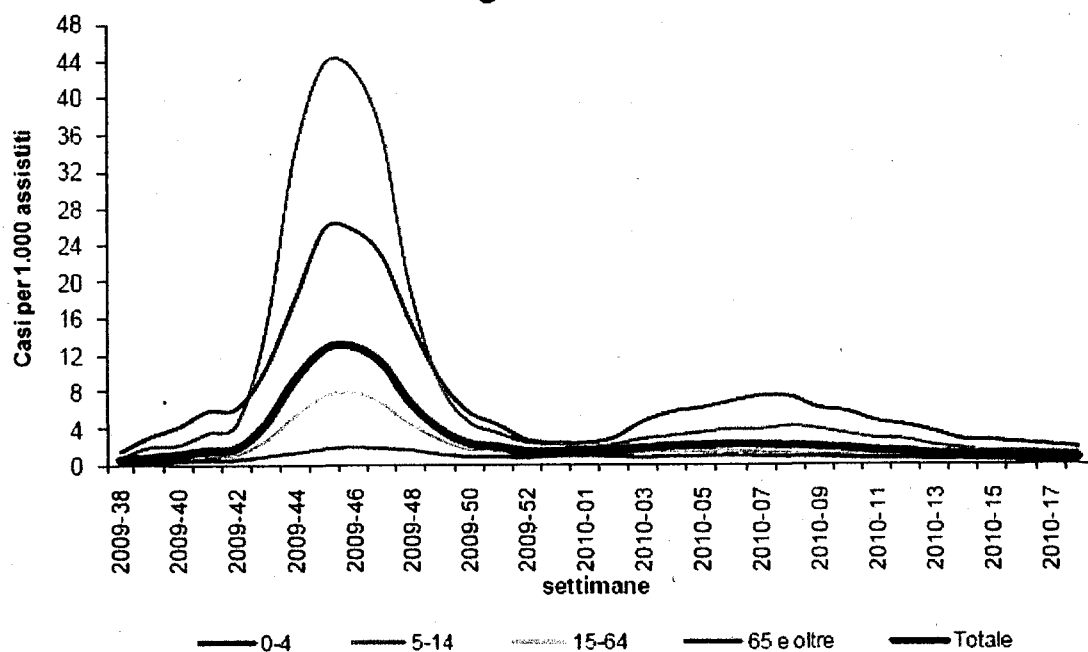
Figure 1: Weekly GP influenza/influenza-like illness consultation rates in the UK.



39

イタリア

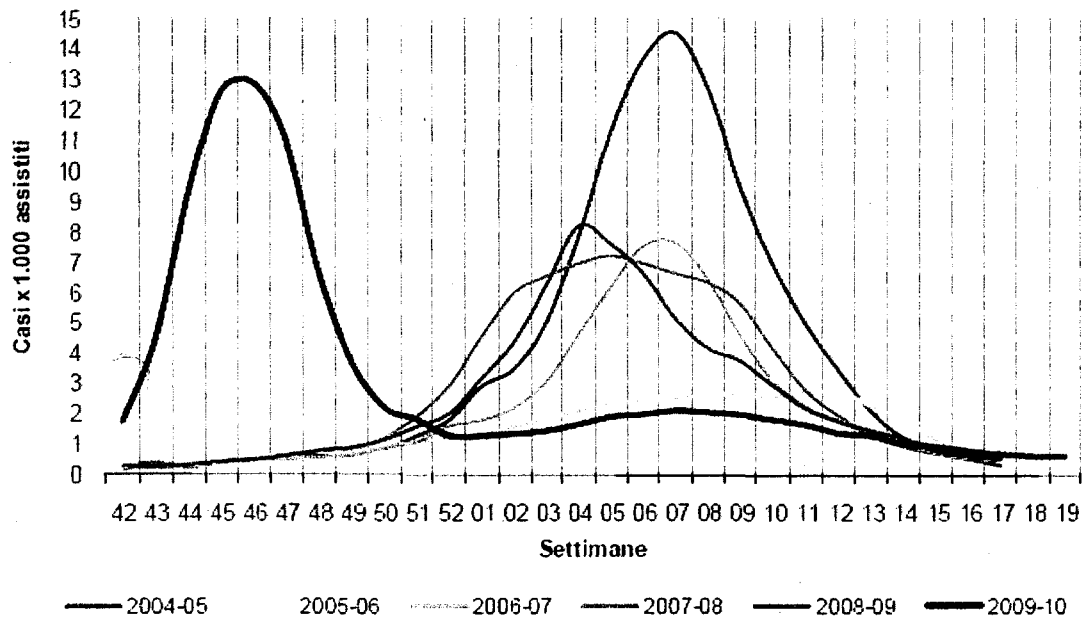
Incidenza dell'influenza per classi di età nella stagione 2009 - 2010



40

イタリア

Incidenza dell'influenza dalla stagione 2004-05 alla 2009-2010



41

イタリア

Circolazione virus influenzali epidemici e pandemici in Italia (rete Influnet)

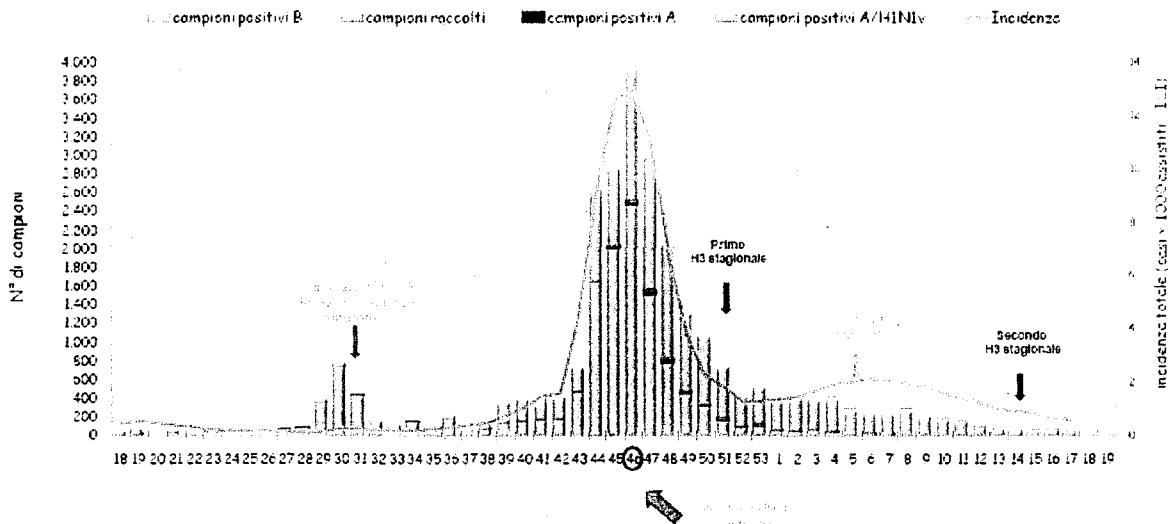


Figura 1. Dati virologici complessivi, relativi al periodo aprile 2009 - maggio 2010 (settimane 18/2009 - 19/2010)

42

シンガポール

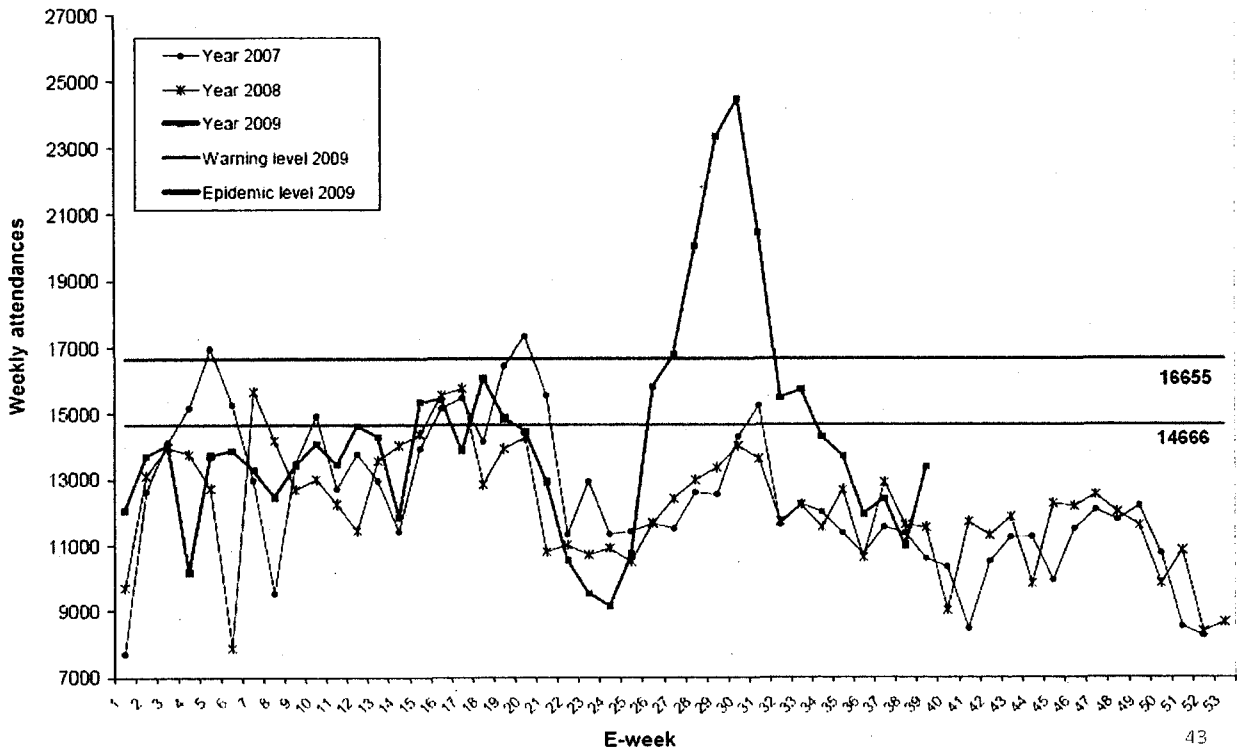
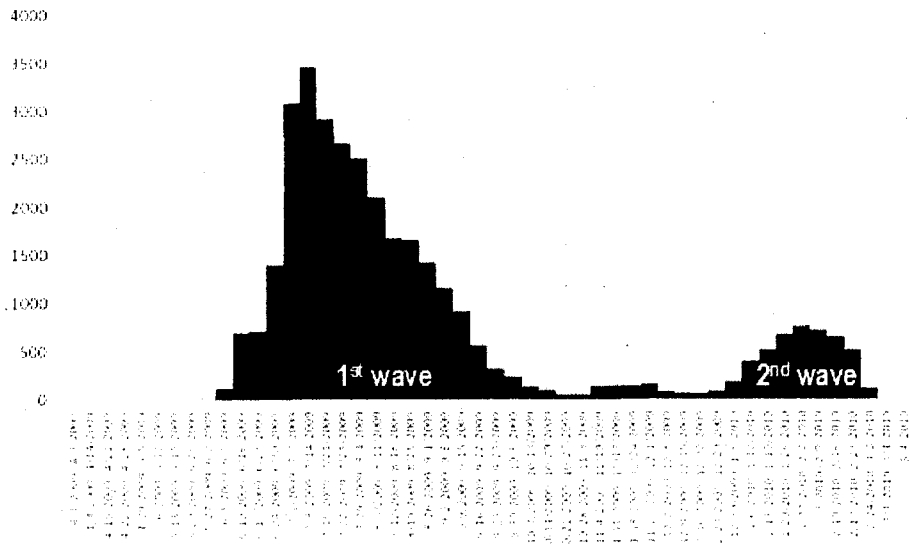


Fig. 2. Weekly polyclinic attendances of acute respiratory infection, year 2007 to 2009.

タイ

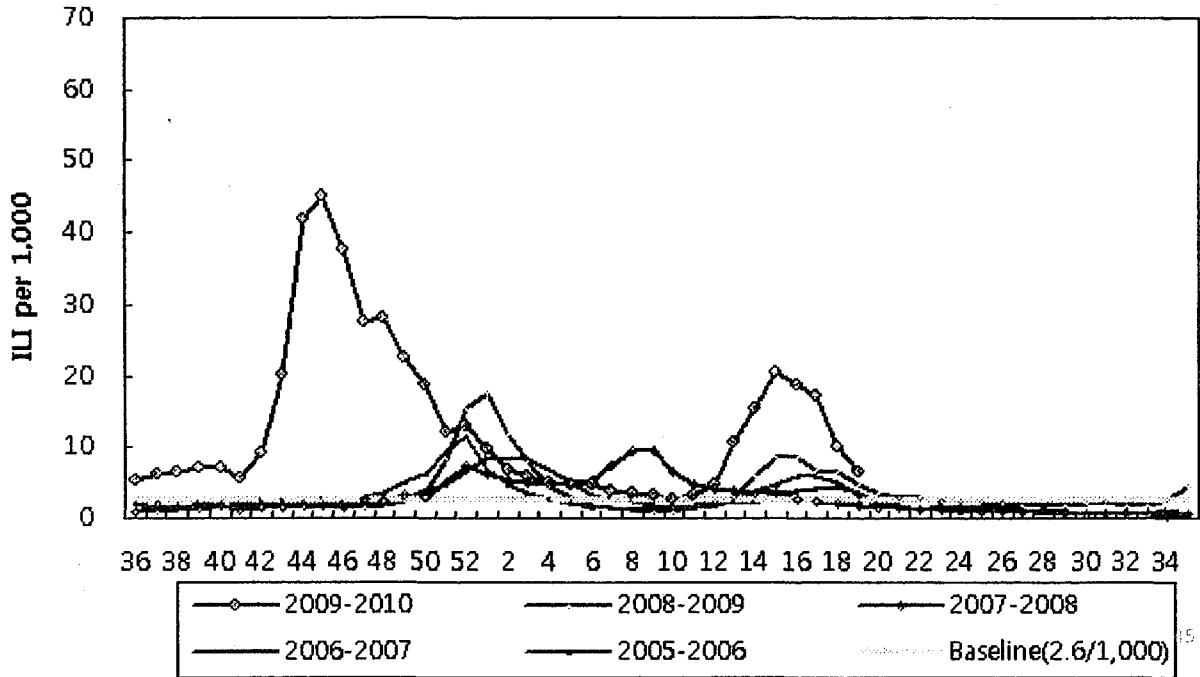
Figure 1 : Numbers of confirmed cases of influenza A (H1N1) 2009 in Thailand, by week, April 2009 - April 2010



Source: Bureau of Epidemiology, MOPH

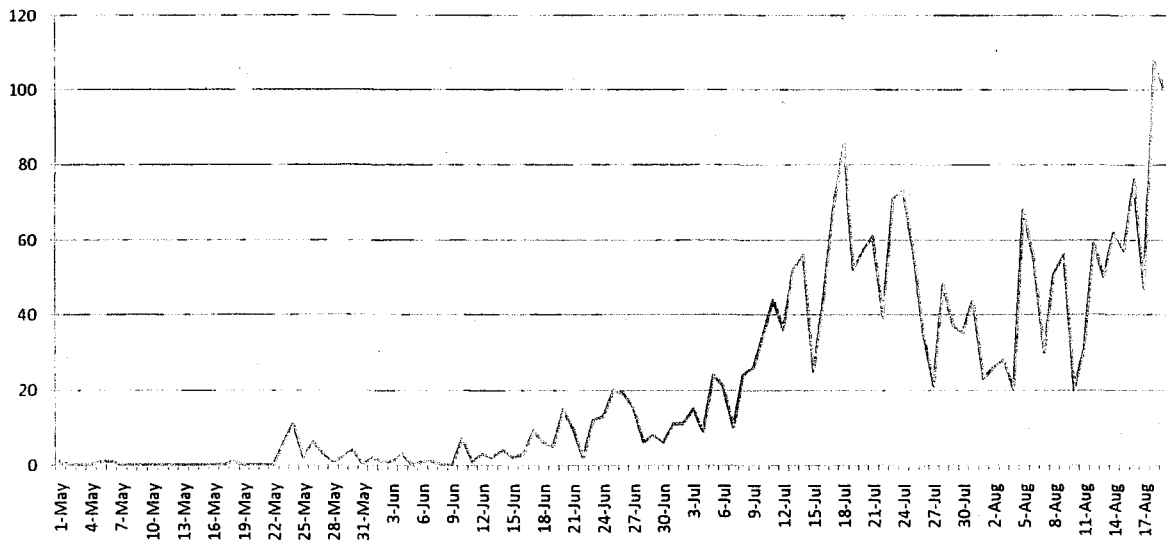
韓国

The weekly proportion of influenza-like illness visits per 1,000 patients, 2005-2006 season - 2009-2010 season



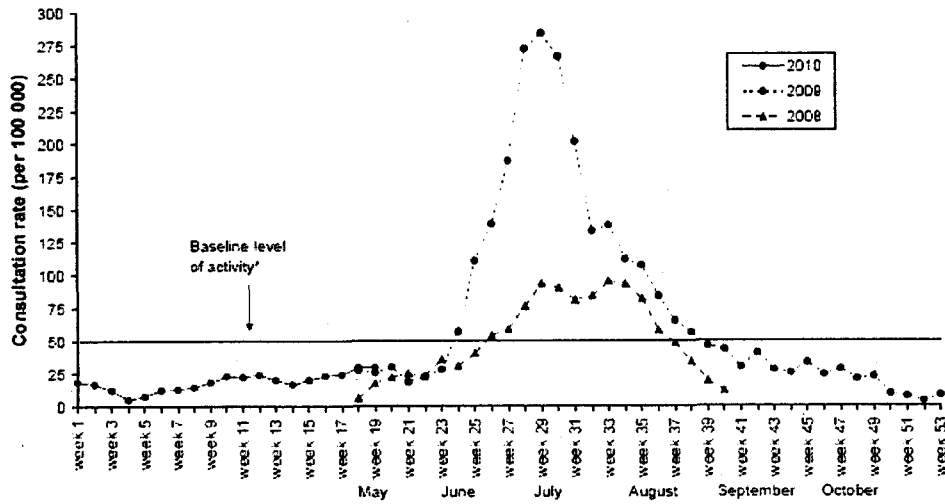
韓国

Confirmed Influenza A(H1N1) Cases Until Aug. 19



ニュージーランド

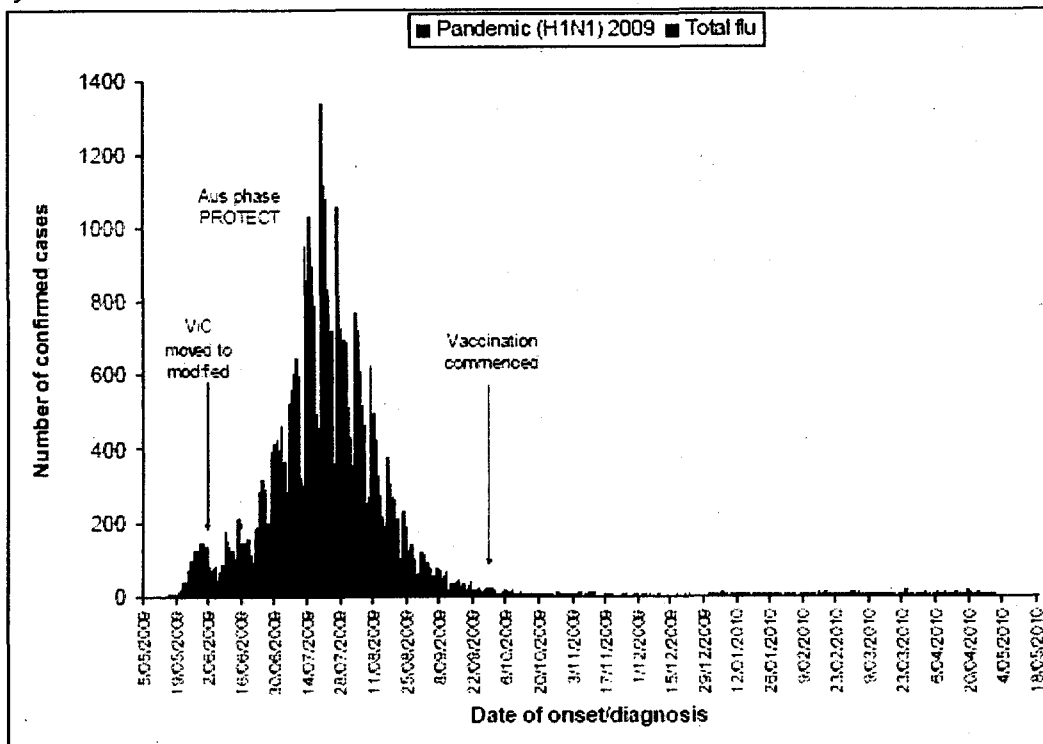
Figure 2: Weekly consultation rates for influenza-like illness in New Zealand, 2008, 2009 and 2010



* A weekly rate of 50 ILI consultations per 100 000 patient population is considered baseline activity. A rate of 50–249 is considered indicative of normal seasonal influenza activity, and a rate of 250–399 indicative of higher than expected influenza activity. A rate of 400 ILI consultations per 100 000 patient population indicates an epidemic level of influenza activity.

オーストラリア

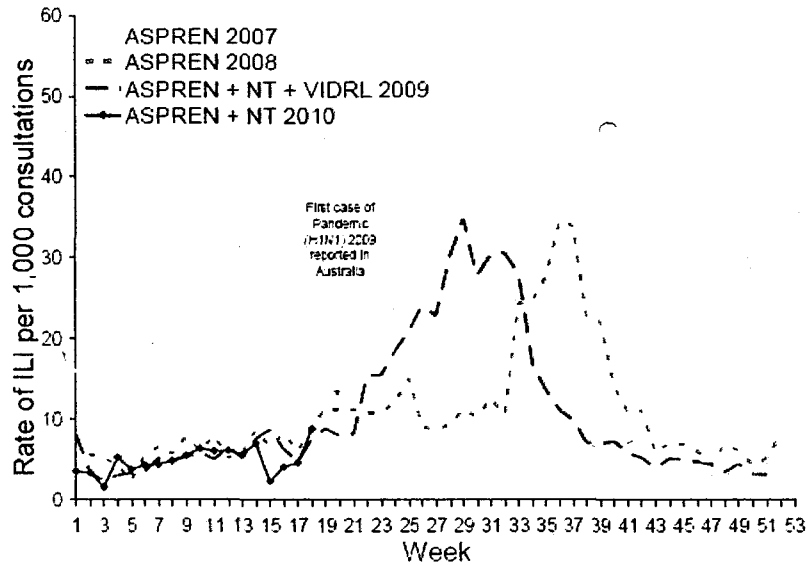
Figure 1. Laboratory confirmed cases of pandemic (H1N1) 2009 and total influenza in Australia, to 7 May 2010



Note: Total influenza series starts on 1 January 2010.
Source: NetEpi (2009; NSW 2010) and NNDSS (2010)

オーストラリア

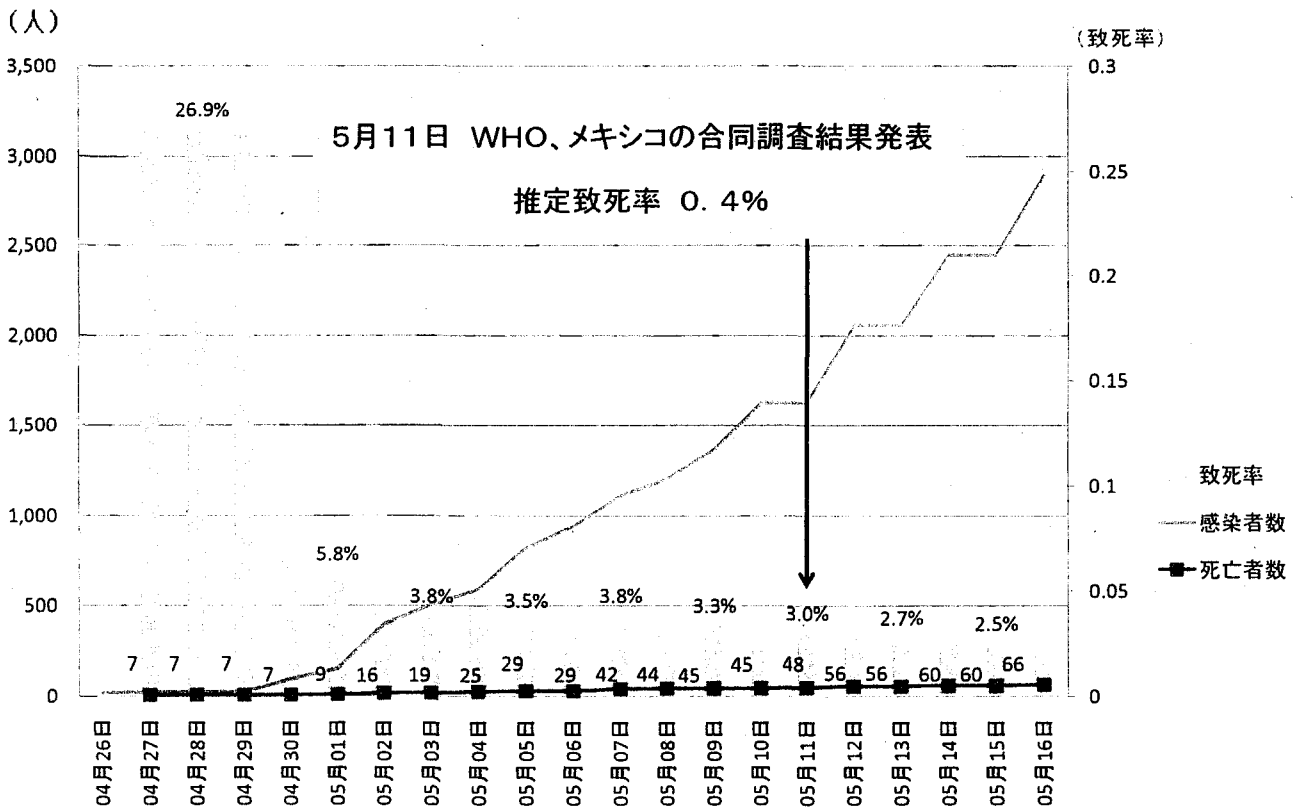
Figure 3. Weekly rate of ILI reported from GP ILI surveillance systems from 1 January 2007 to 2 May 2010*



* Delays in the reporting of data may cause data to change retrospectively. As data from the NT surveillance system is combined with ASPREN data for 2010, rates may not be directly comparable across 2007, 2008 and 2009.

SOURCE: ASPREN, and NT GP surveillance system.

メキシコの致死率の推移



出典：WHO Situation updates - Pandemic (H1N1) 2009

Science : Pandemic Potential of a Strain of Influenza A (H1N1): Early Findings, Neil M. Ferguson et al, May 11 2009