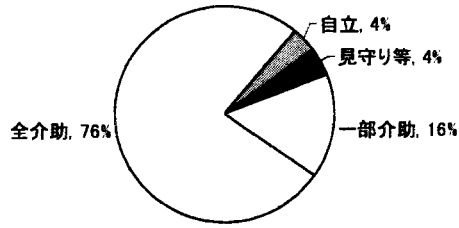
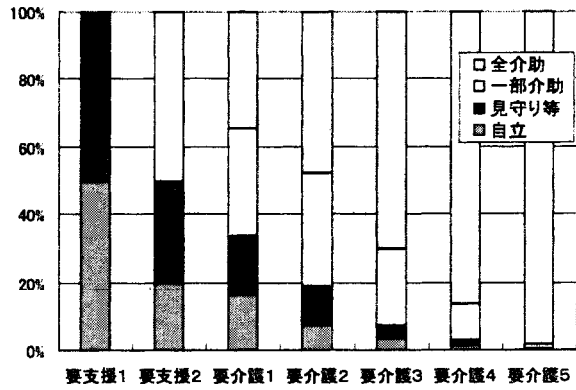


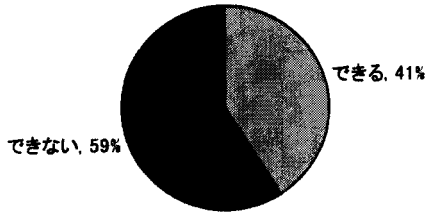
15-11-2 日常生活で手順に沿った用意をする



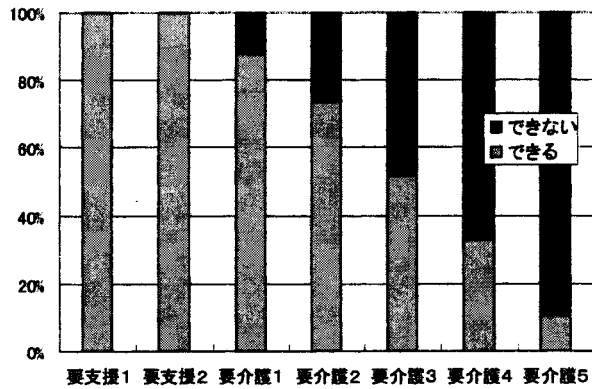
15-11-2 日常生活で手順に沿った用意をする



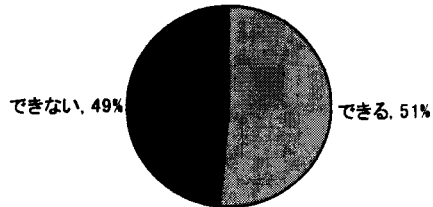
15-12 今の時間を理解する



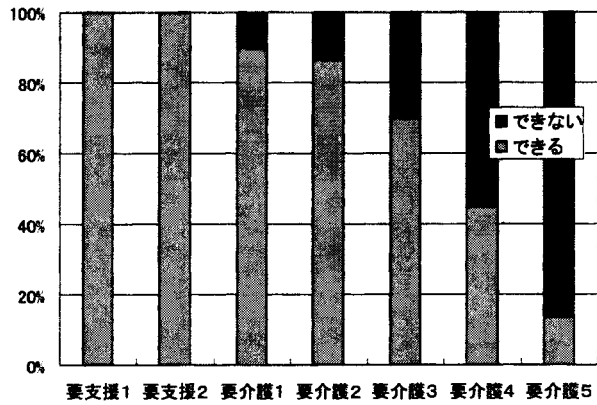
15-12 今の時間を理解する



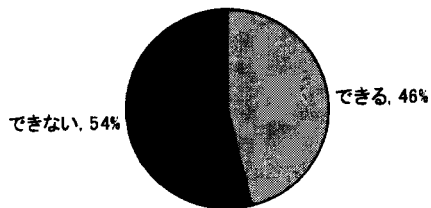
15-13 11以上のものの数を数える



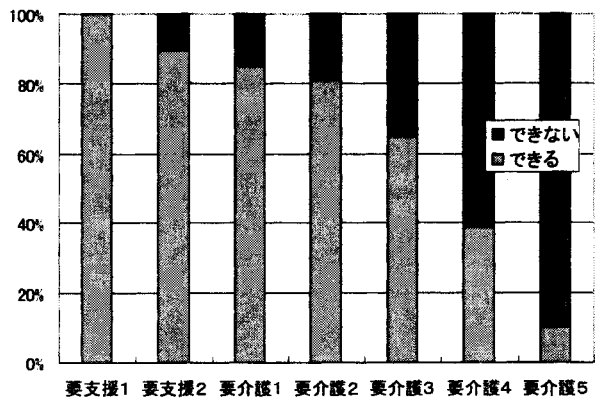
15-13 11以上のものの数を数える

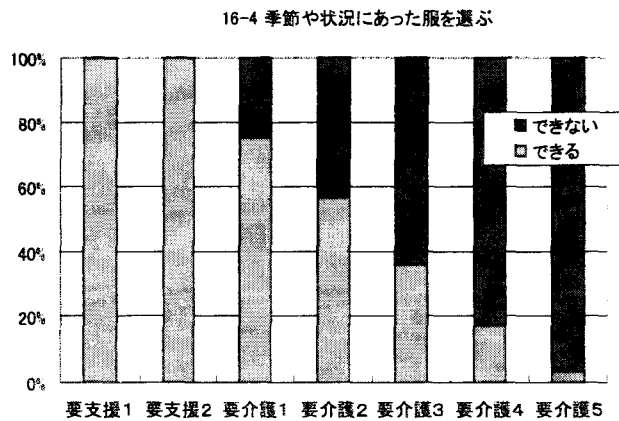
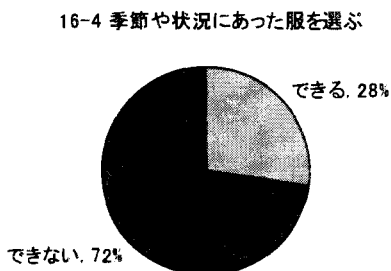
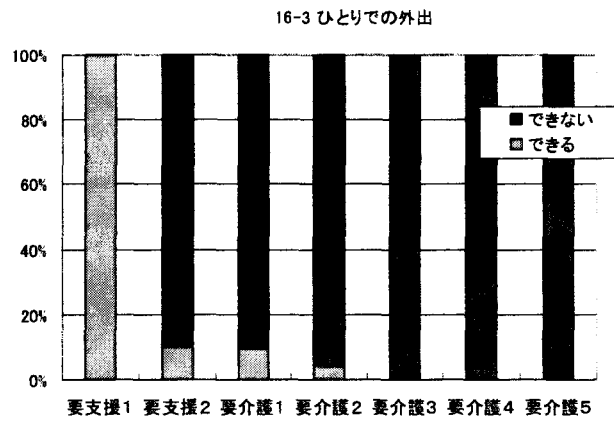
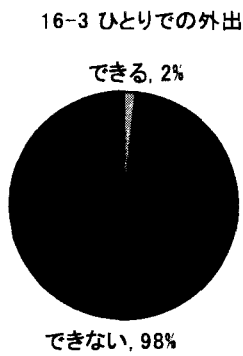
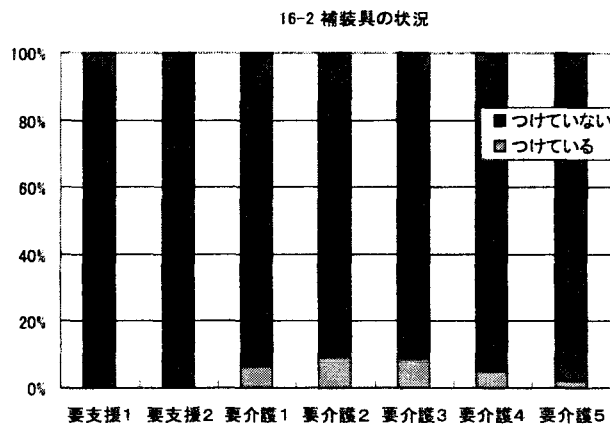
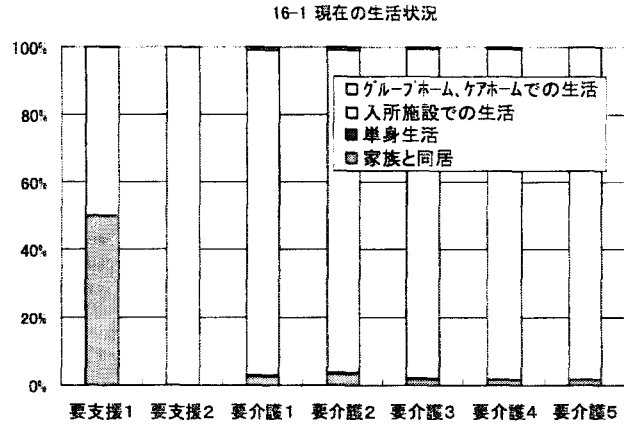
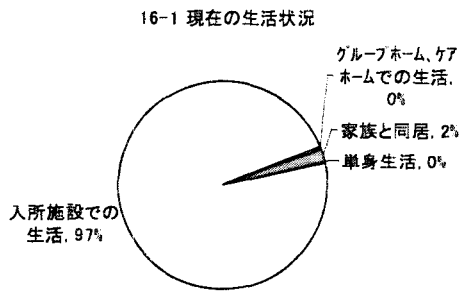


15-14 文字の読み書き

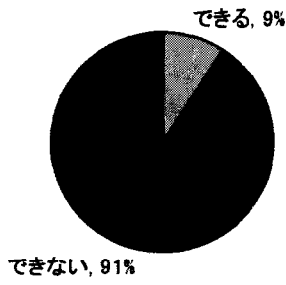


15-14 文字の読み書き

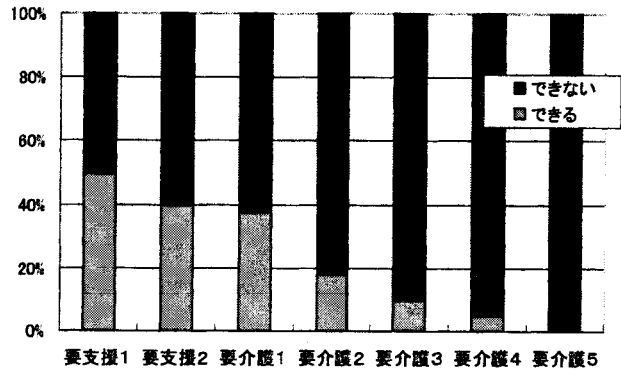




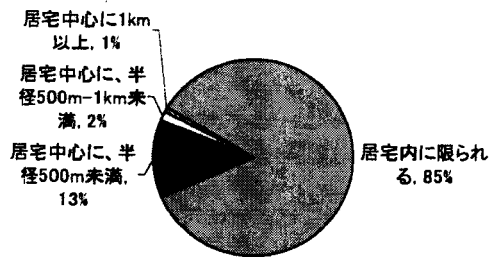
16-5 郵便物や宅配便の処理



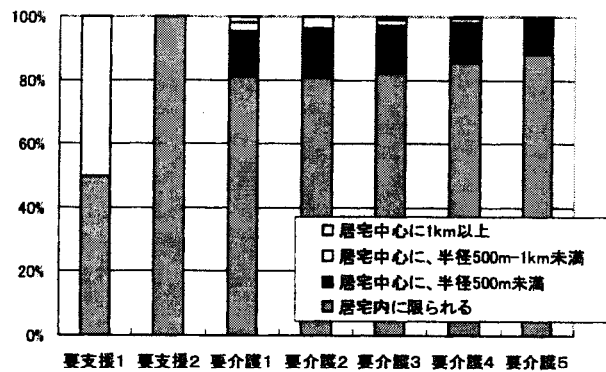
16-5 郵便物や宅配便の処理



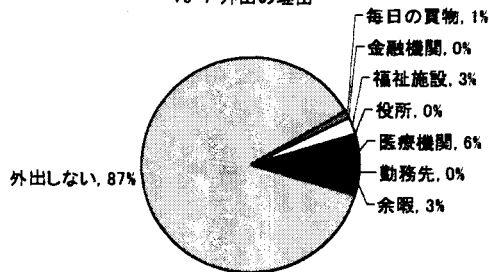
16-6 毎日の移動範囲



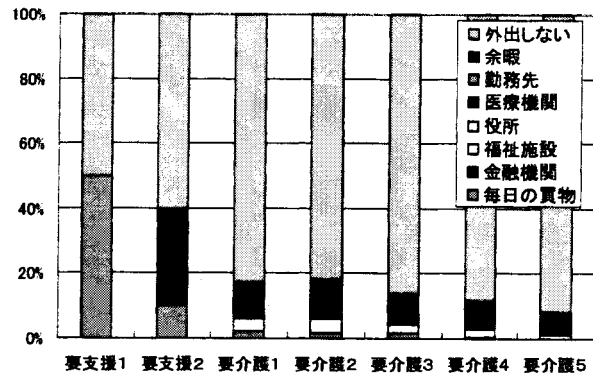
16-6 毎日の移動範囲



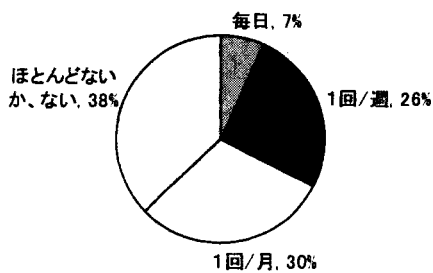
16-7 外出の理由



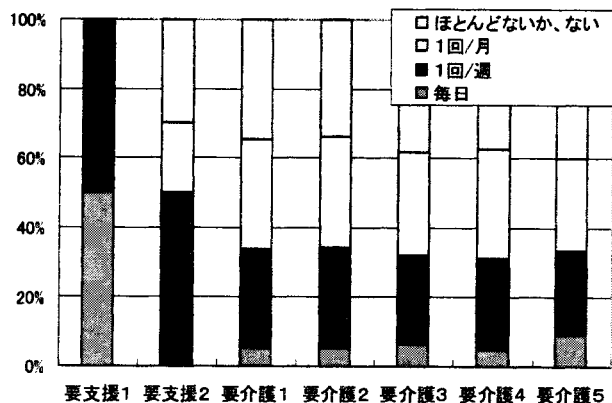
16-7 外出の理由



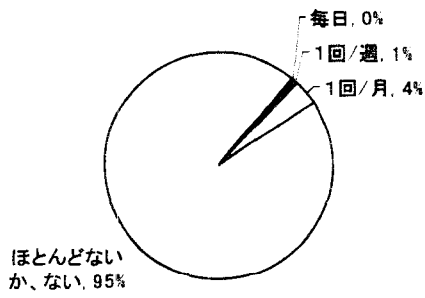
16-8-1 訪問者 同居していない家族



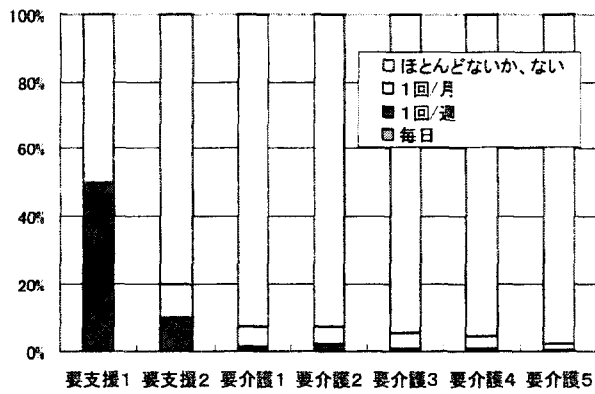
16-8-1 訪問者 同居していない家族



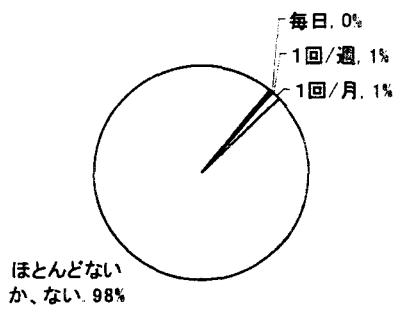
16-8-2 訪問者 友人



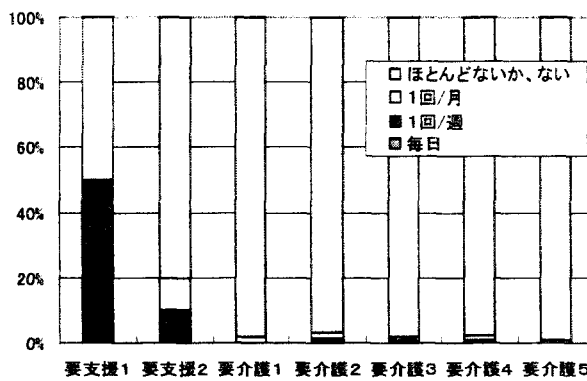
16-8-2 訪問者 友人



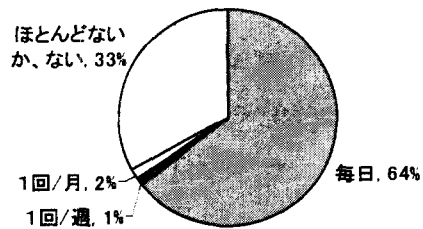
16-8-3 訪問者 近隣の住民



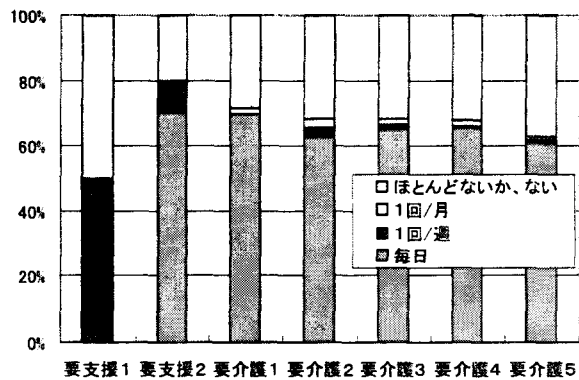
16-8-3 訪問者 近隣の住民



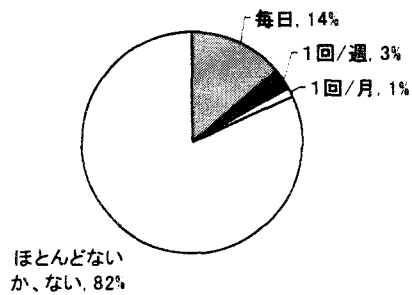
16-8-4 訪問者 福祉施設職員



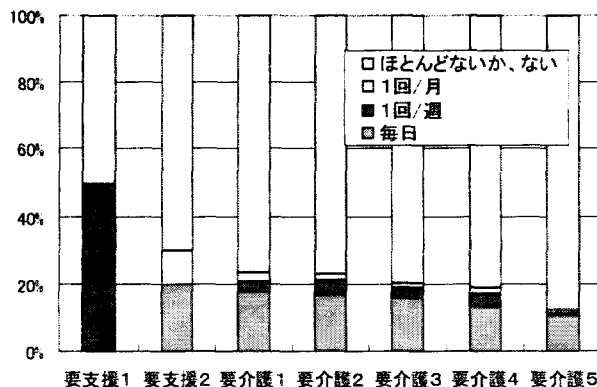
16-8-4 訪問者 福祉施設職員



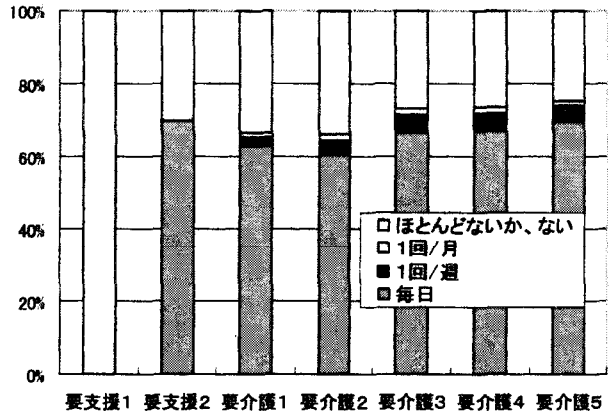
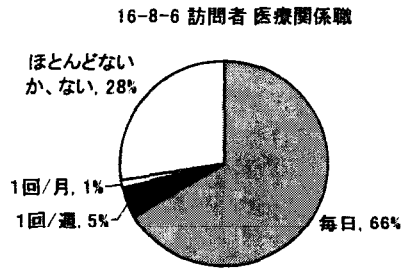
16-8-5 訪問者 福祉サービス職員



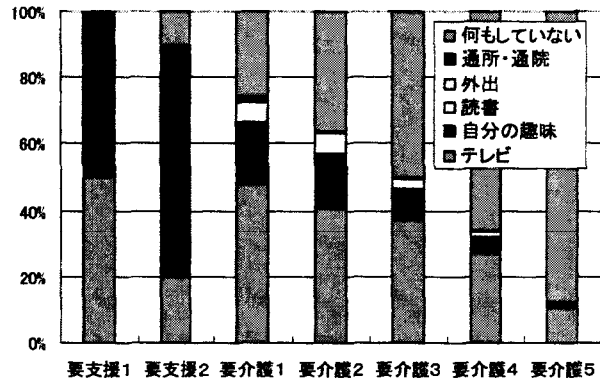
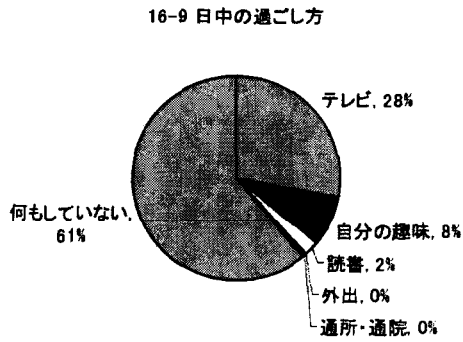
16-8-5 訪問者 福祉サービス職員



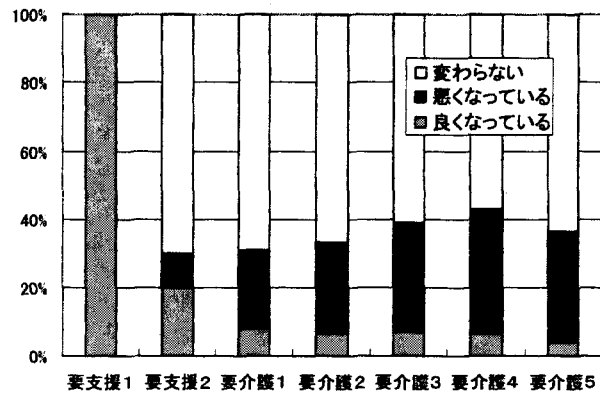
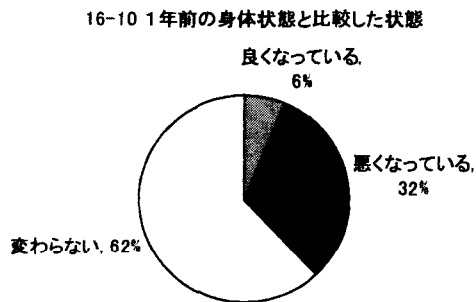
16-8-6 訪問者 医療関係職

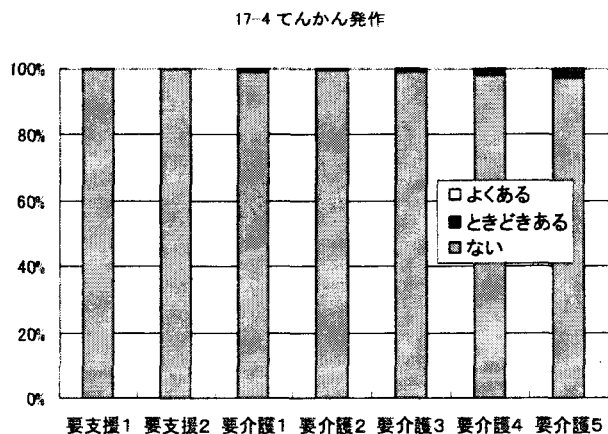
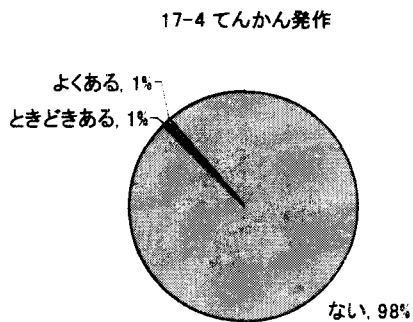
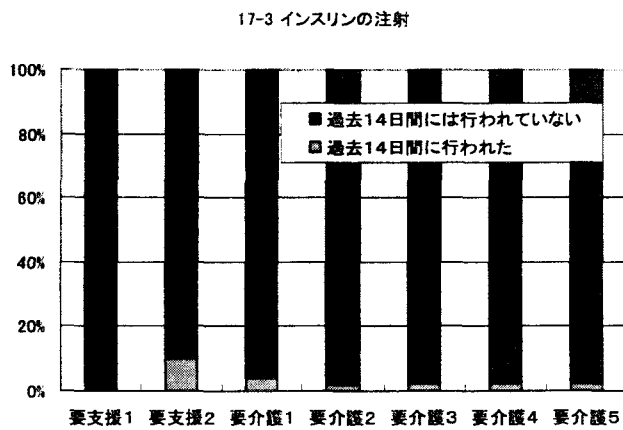
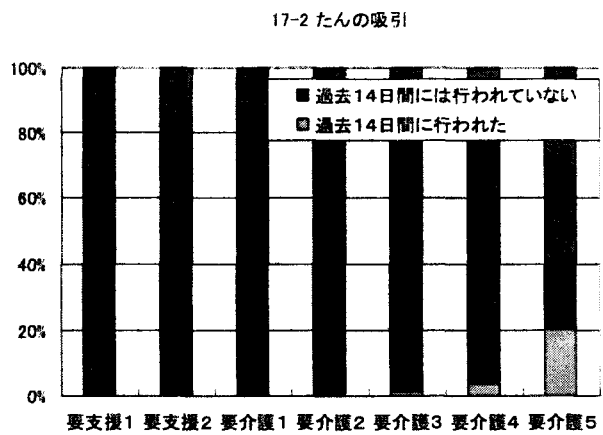
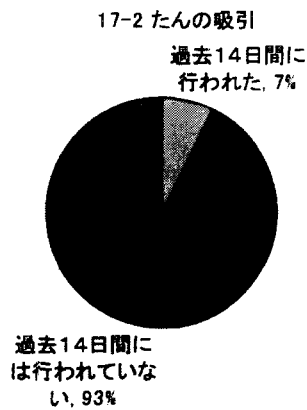
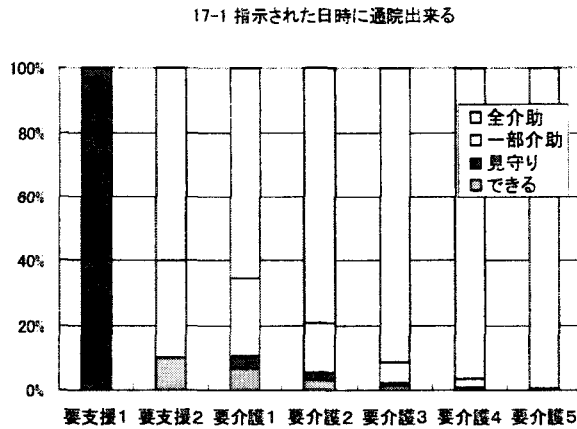
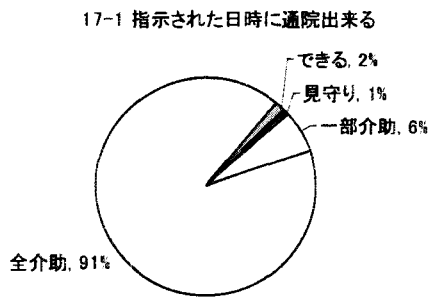


16-9 日中の過ごし方

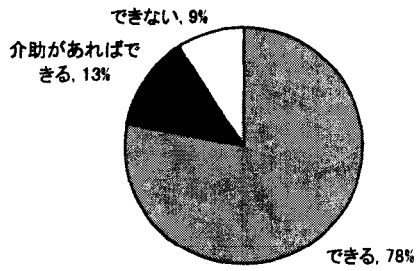


16-10 1年前の身体状態と比較した状態

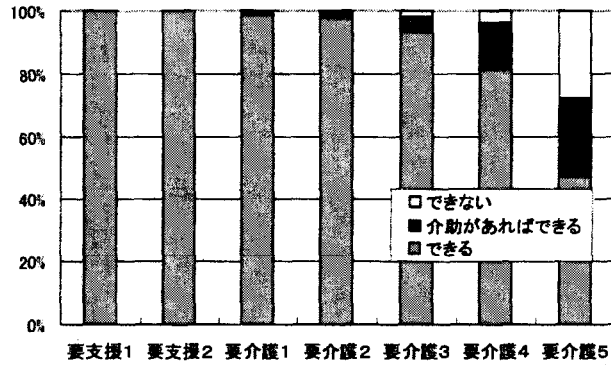




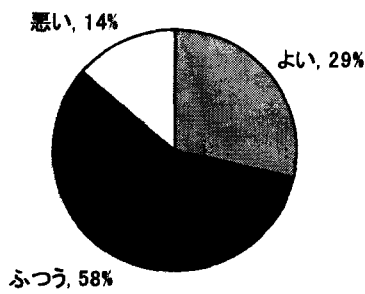
17-5 片手胸元持ち上げ



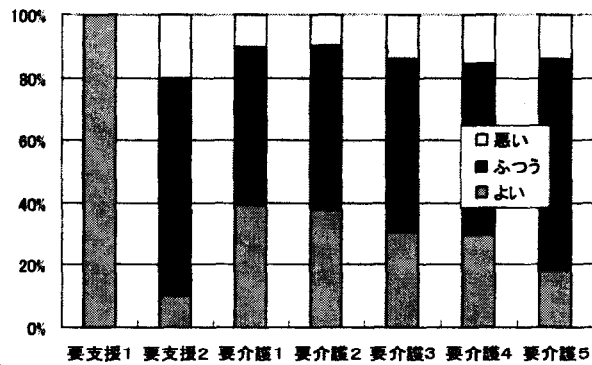
17-5 片手胸元持ち上げ



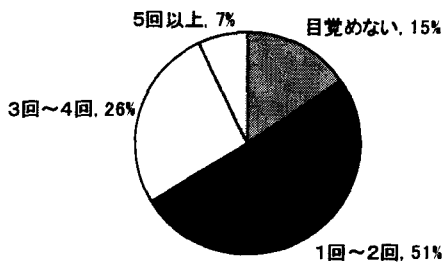
17-6 寝つきについて



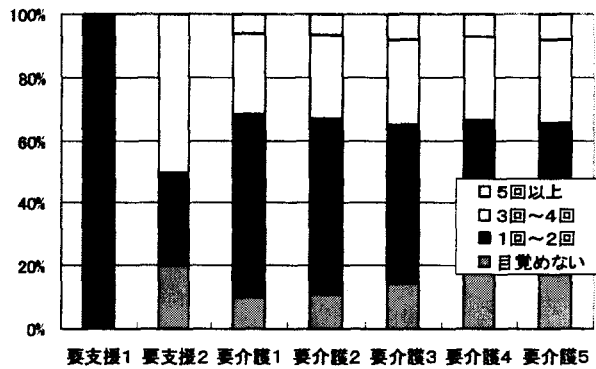
17-6 寝つきについて



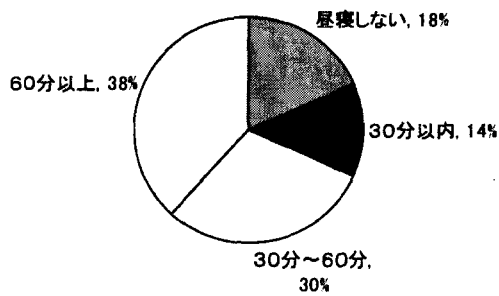
17-7 夜中の目覚めの回数



17-7 夜中の目覚めの回数



17-8 昼寝



17-8 昼寝

