

こころと、耳をひらくテキスト

あぷり〜れ

..... 児玉千賀子 著

アジェンダやまがた



こころと、耳をひらくテキスト

あぷり〜れ

だい 3 かん

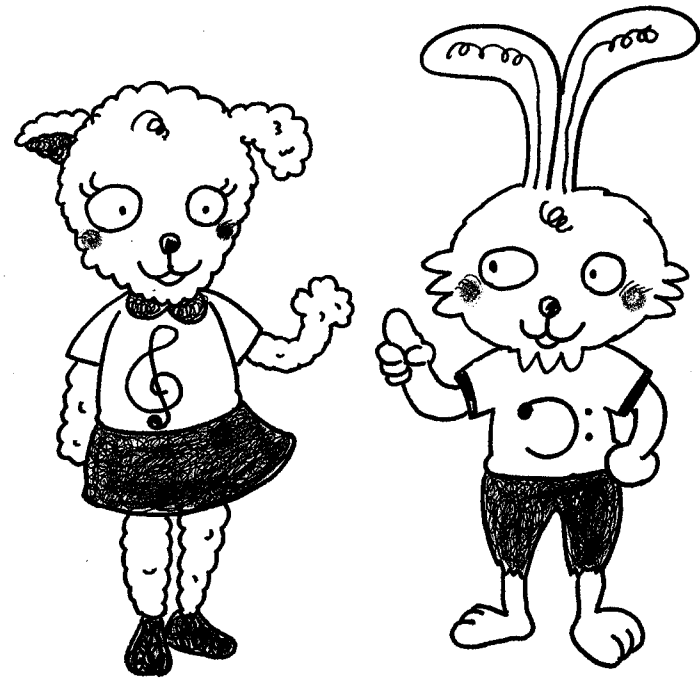
おとであそぼ

♫ さいごはラシドだよ!

ドレミファソラシドぜんぶのおとと、

おともだちになれるかな?

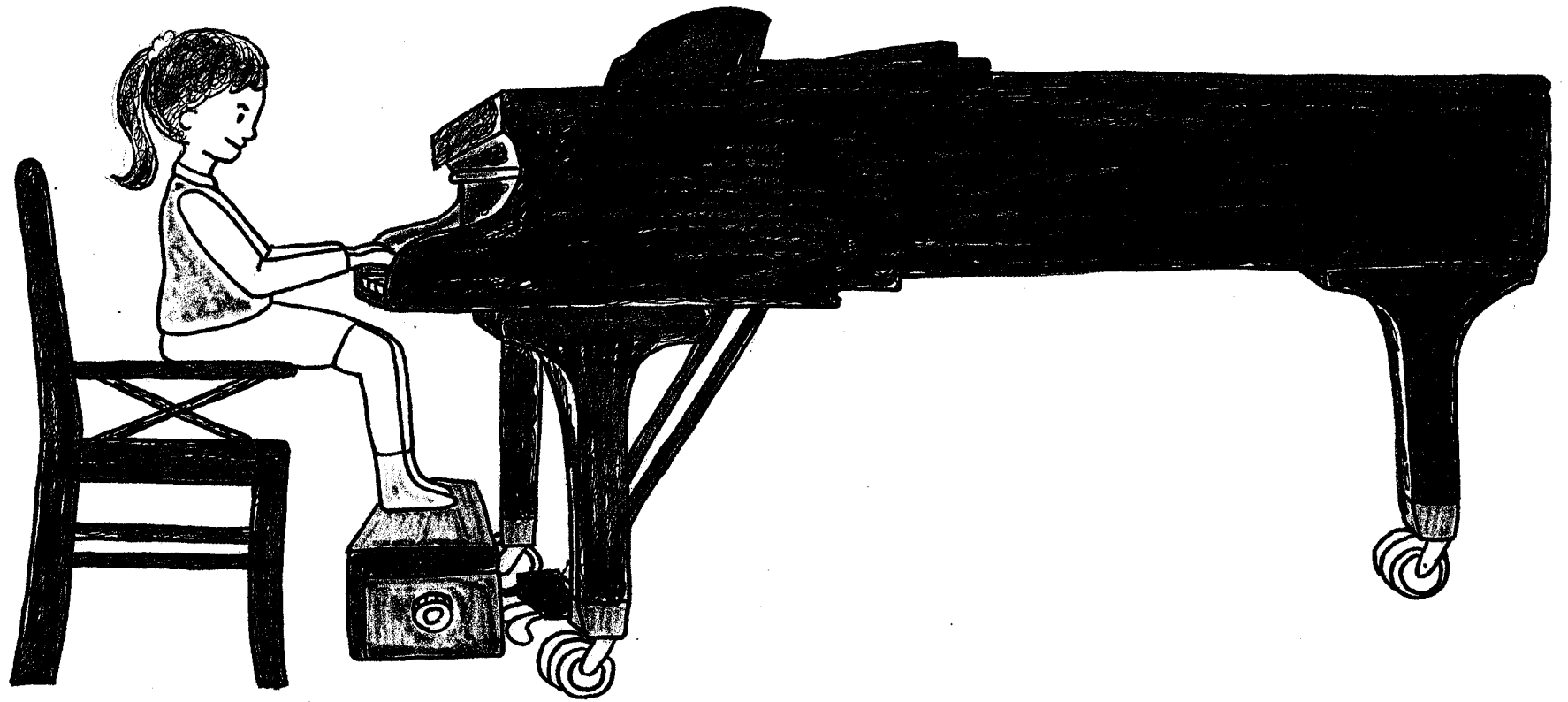
㊦: ゆびのばんごうもおぼえるよ!



もくじ

<input type="checkbox"/>	1. ピアノをひくしせい	4	<input type="checkbox"/>	19. ゆびごえ	25
<input type="checkbox"/>	2. てのかたち	5	<input type="checkbox"/>	20. のぼっておりよう ドレミファソラ	26
<input type="checkbox"/>	3. ラのおえかき	6	<input type="checkbox"/>	21. おりてのぼろう ドレミファソラ	27
<input type="checkbox"/>	4. ラをかきましょう	7	<input type="checkbox"/>	22. ドレミファソラのおけいこ①	28
<input type="checkbox"/>	5. ラのおけいこ①	8	<input type="checkbox"/>	23. ドレミファソラのおけいこ②	29
<input type="checkbox"/>	6. ラのおけいこ②	9	<input type="checkbox"/>	24. のぼっておりよう ドレミファソラシ	30
<input type="checkbox"/>	7. シのおえかき	10	<input type="checkbox"/>	25. おりてのぼろう ドレミファソラシ	31
<input type="checkbox"/>	8. シをかきましょう	11	<input type="checkbox"/>	26. ドレミファソラシのおけいこ①	32
<input type="checkbox"/>	9. シのおけいこ①	12	<input type="checkbox"/>	27. ドレミファソラシのおけいこ②	33
<input type="checkbox"/>	10. シのおけいこ②	13	<input type="checkbox"/>	28. のぼっておりよう ドレミファソラシド	34
<input type="checkbox"/>	11. ドのおえかき	14	<input type="checkbox"/>	29. おりてのぼろう ドレミファソラシド	35
<input type="checkbox"/>	12. ドをかきましょう	15	<input type="checkbox"/>	30. ドレミファソラシドのおけいこ①	36
<input type="checkbox"/>	13. ドのおけいこ①	16	<input type="checkbox"/>	31. ドレミファソラシドのおけいこ②	37
<input type="checkbox"/>	14. ドのおけいこ②	17	<input type="checkbox"/>	32. おんかいをかいてみよう(ぜんおんぷ)	38
<input type="checkbox"/>	15. ゆびばんごうをおぼえよう	18	<input type="checkbox"/>	33. おんかいをかいてみよう(にぶおんぷ)	40
<input type="checkbox"/>	16. ゆびばんごうのうた	20	<input type="checkbox"/>	34. おんかいをかいてみよう(しぶおんぷ)	41
<input type="checkbox"/>	17. おとのおなまえ	22	<input type="checkbox"/>	35. れんしゅう①~⑧	42
<input type="checkbox"/>	18. ゆびくぐり	24		付録: おんぷにいろをぬってみよう	50

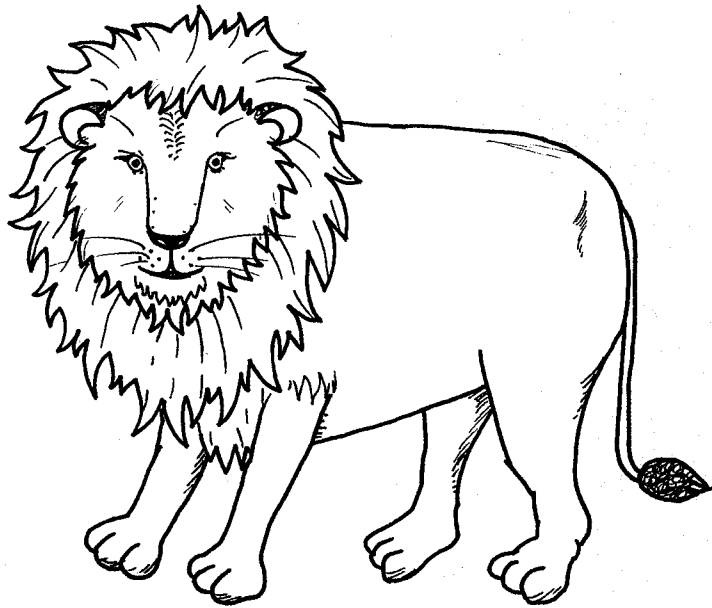
1. ピアノをひくしせい



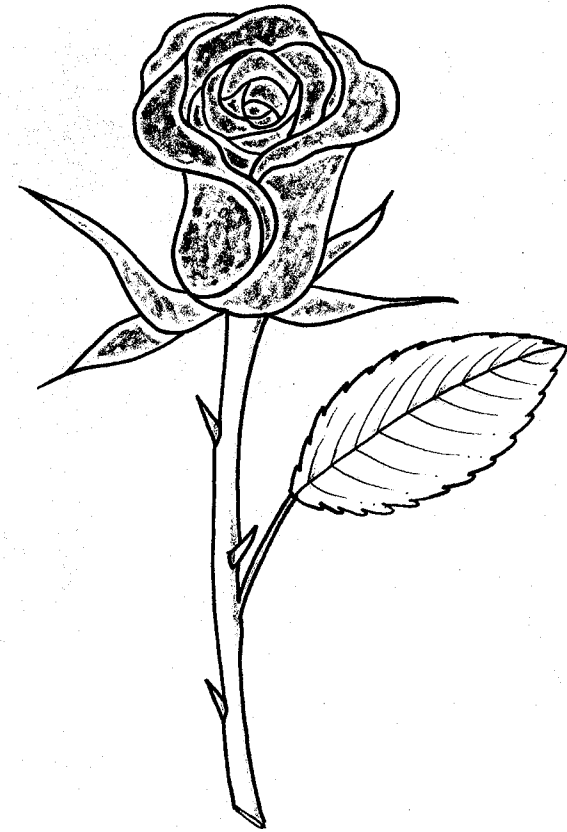
2. てのかたち



3. ラのおえかき

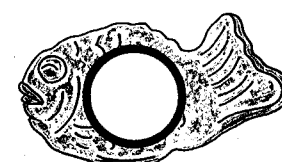
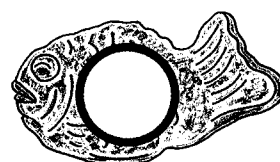
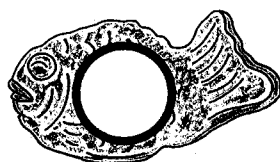
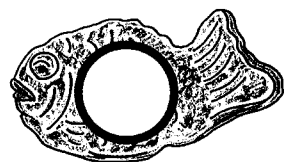
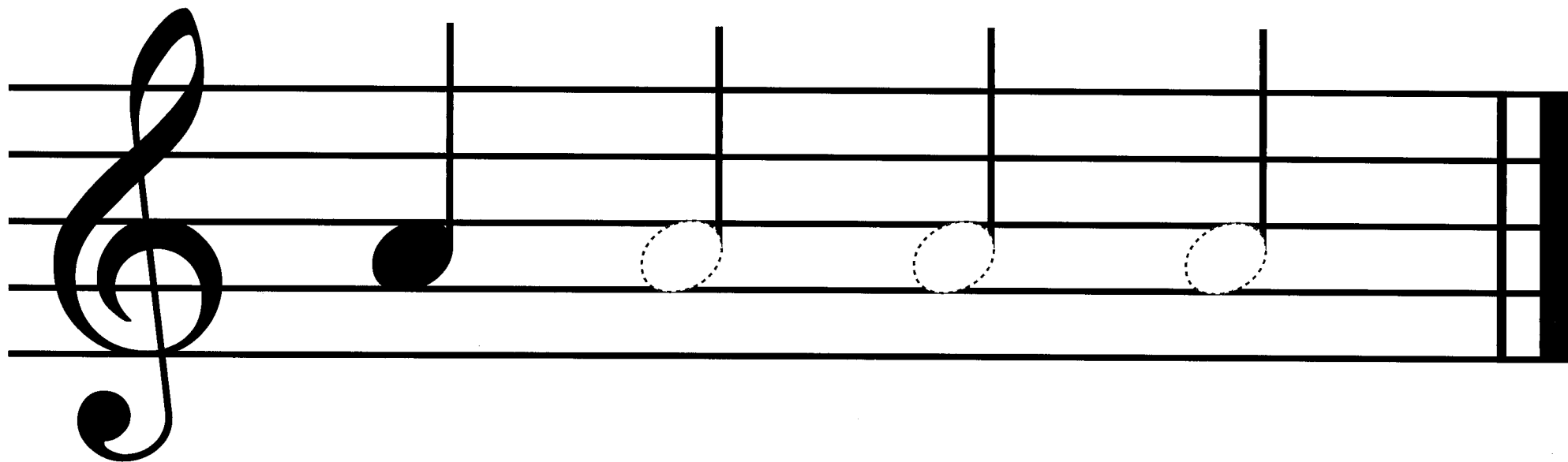


○ イ オ ン

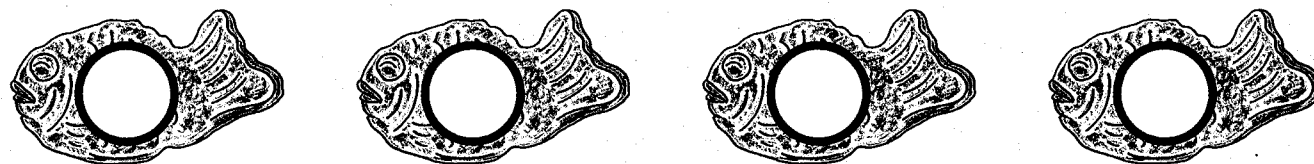
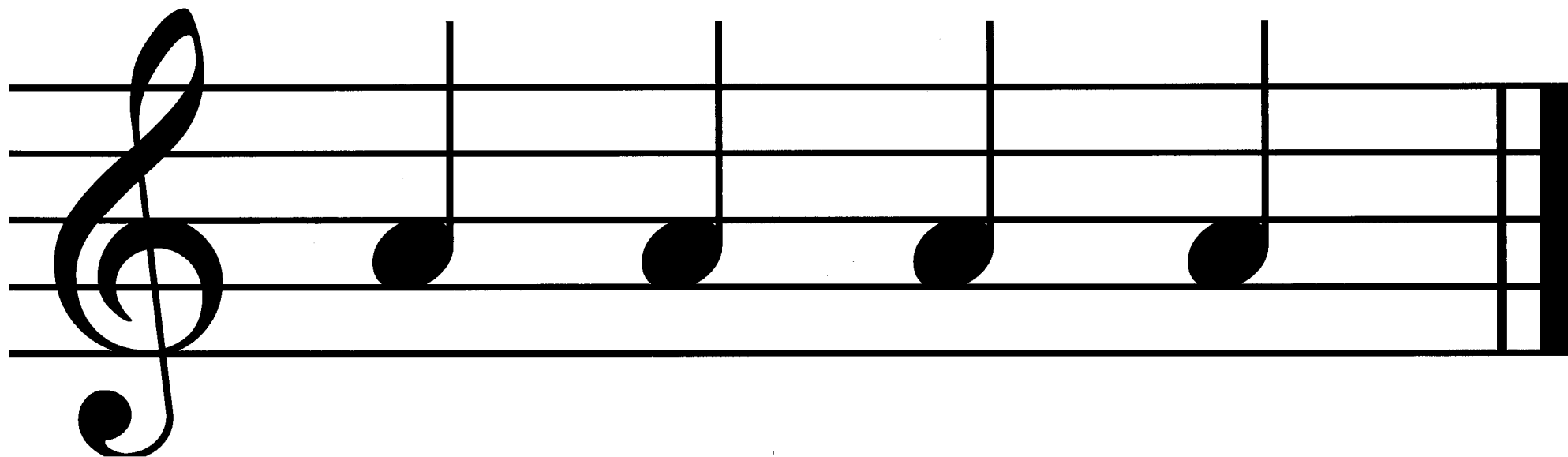


バ ○

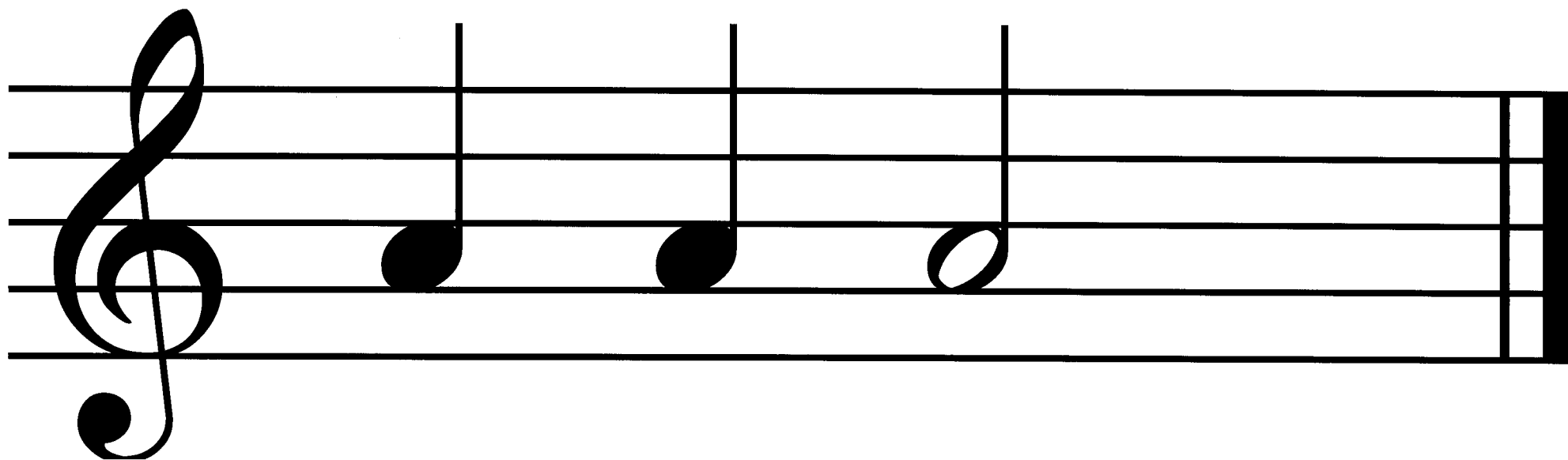
4. ラをかきましょう



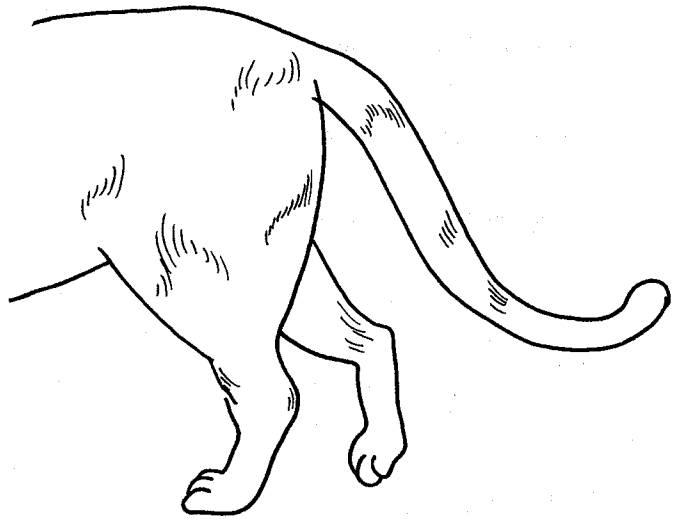
5. ラのおけいこ①



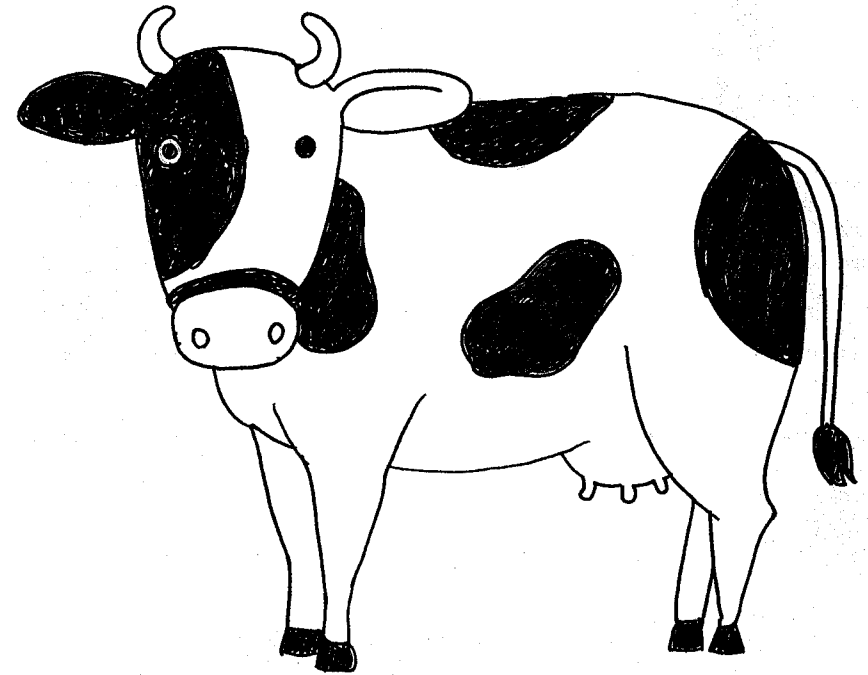
6. ラのおけいこ②



7. シのおえかき

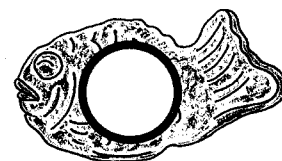
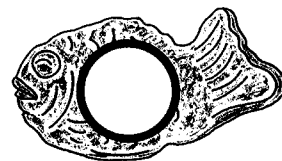
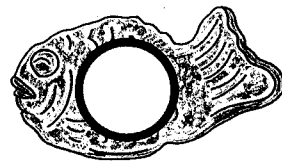
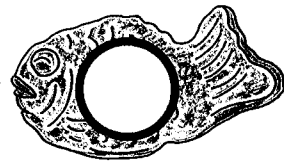
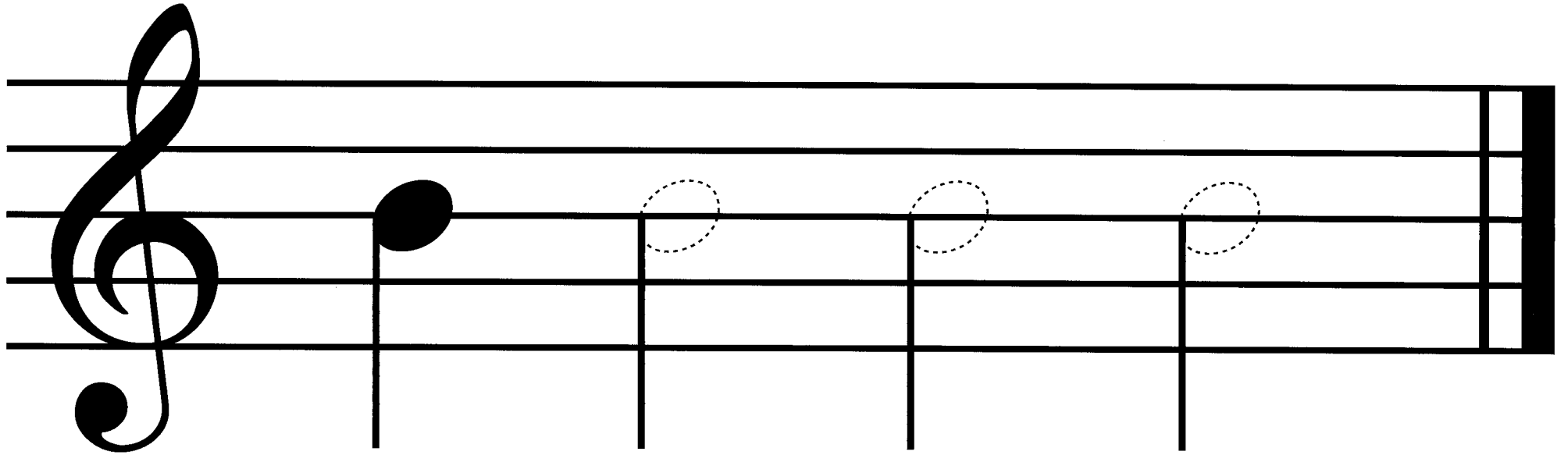


○ っ ぽ

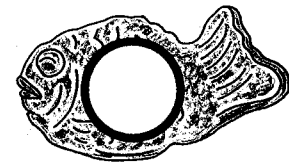
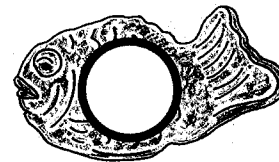
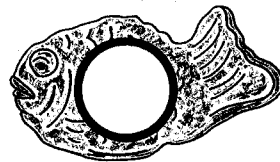
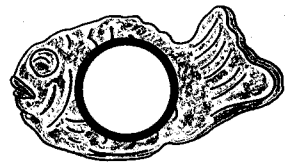
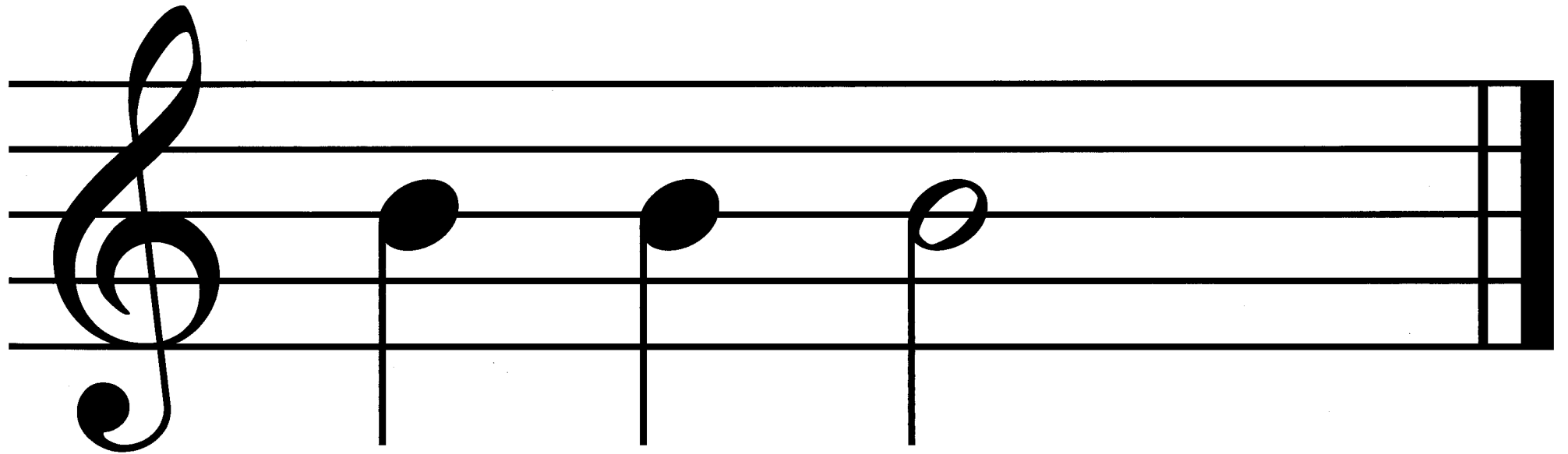


う ○

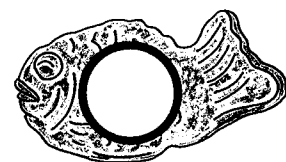
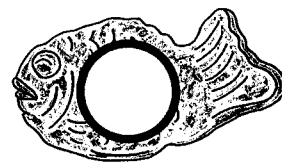
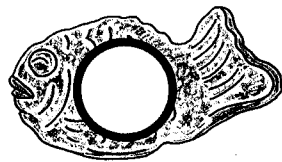
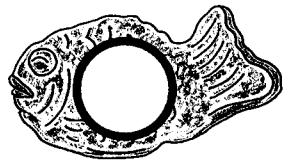
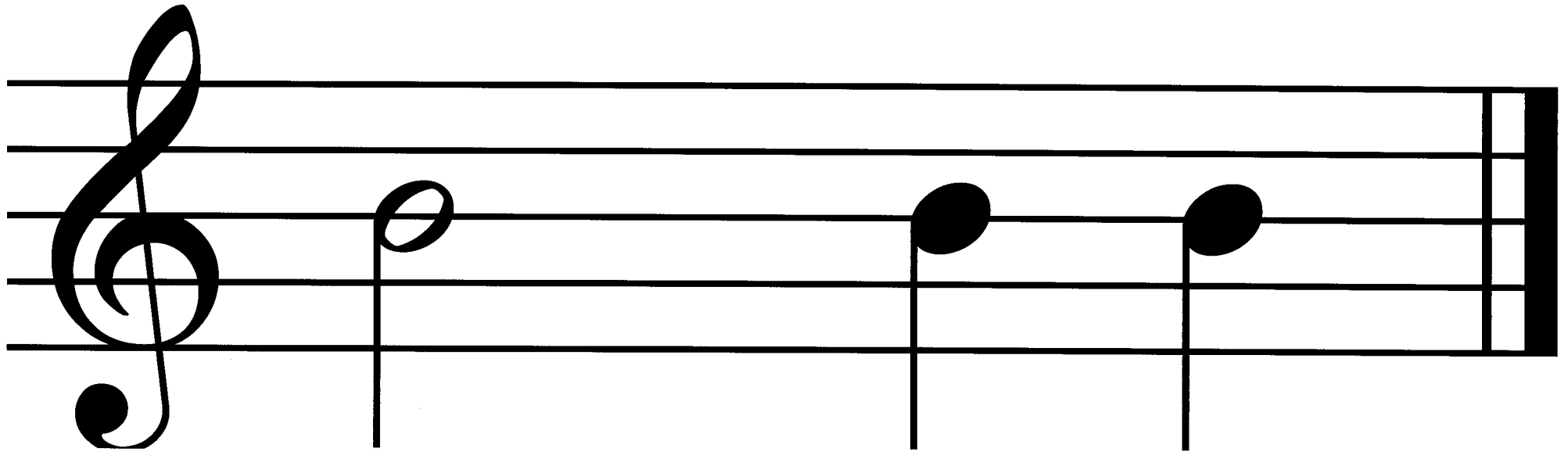
8. シをかきましょう



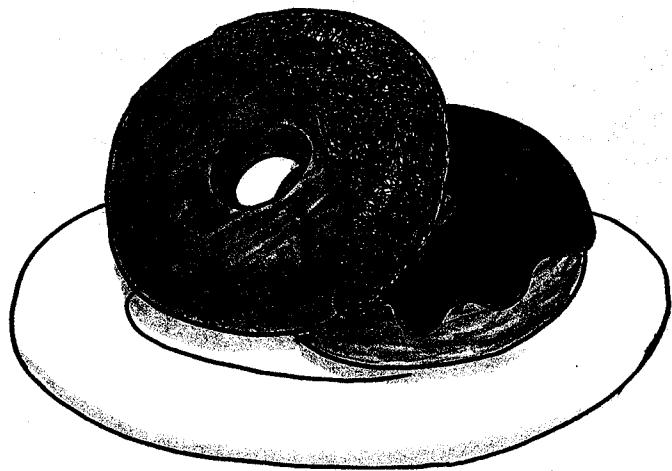
9. シのおけいこ ①



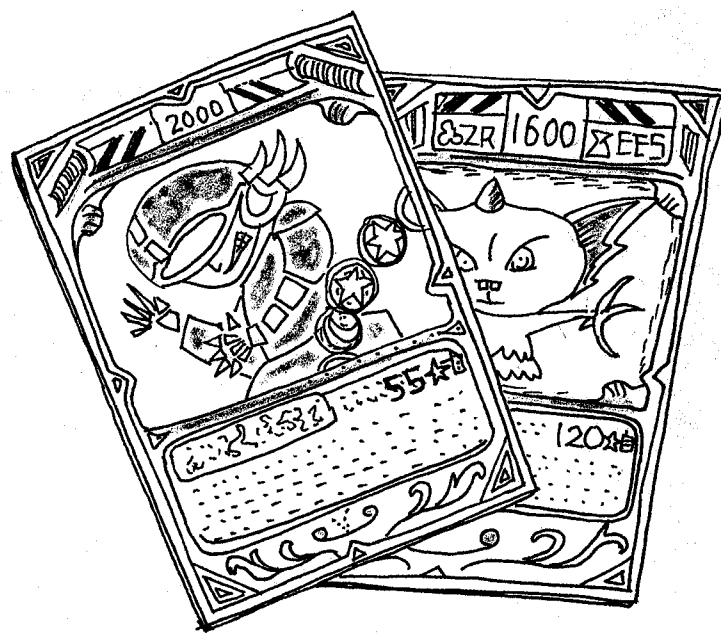
10. シのおけいこ ②



11. ドのおえかき

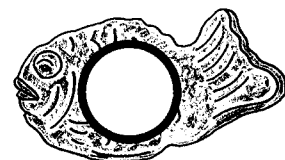
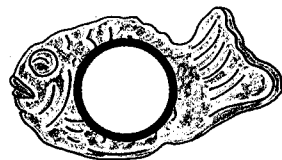
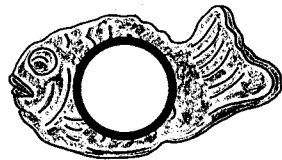
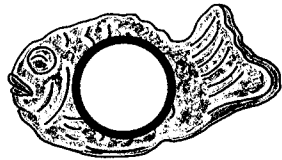
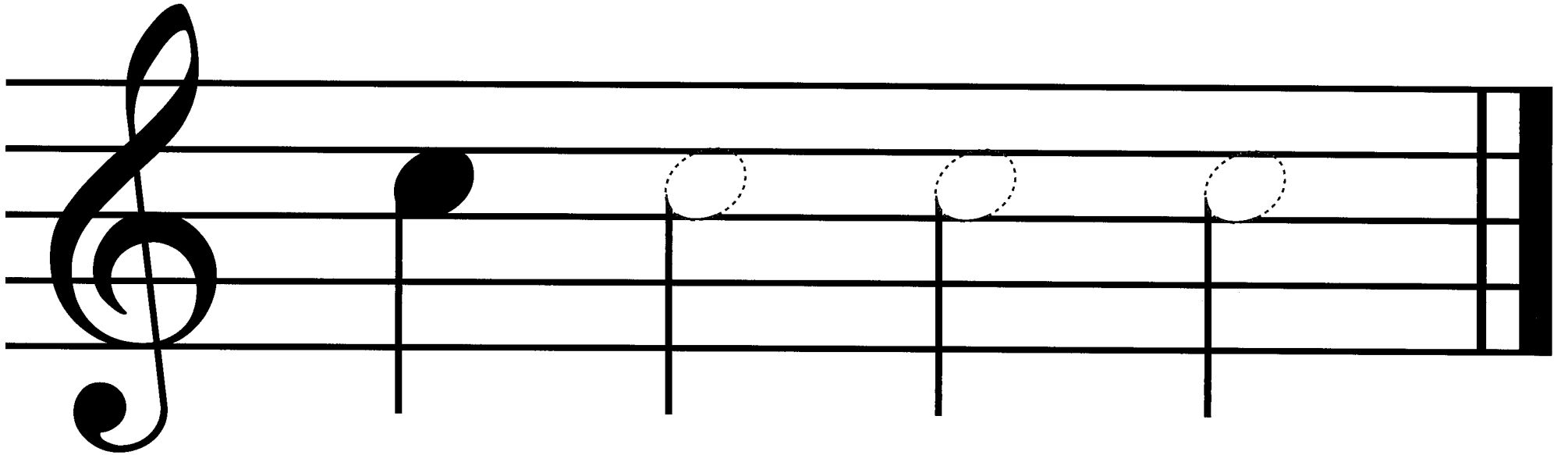


○ - ナ ツ

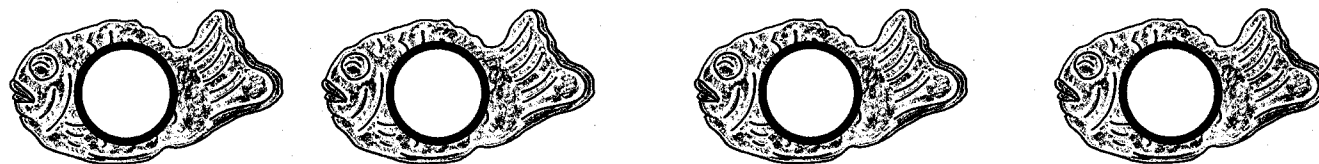
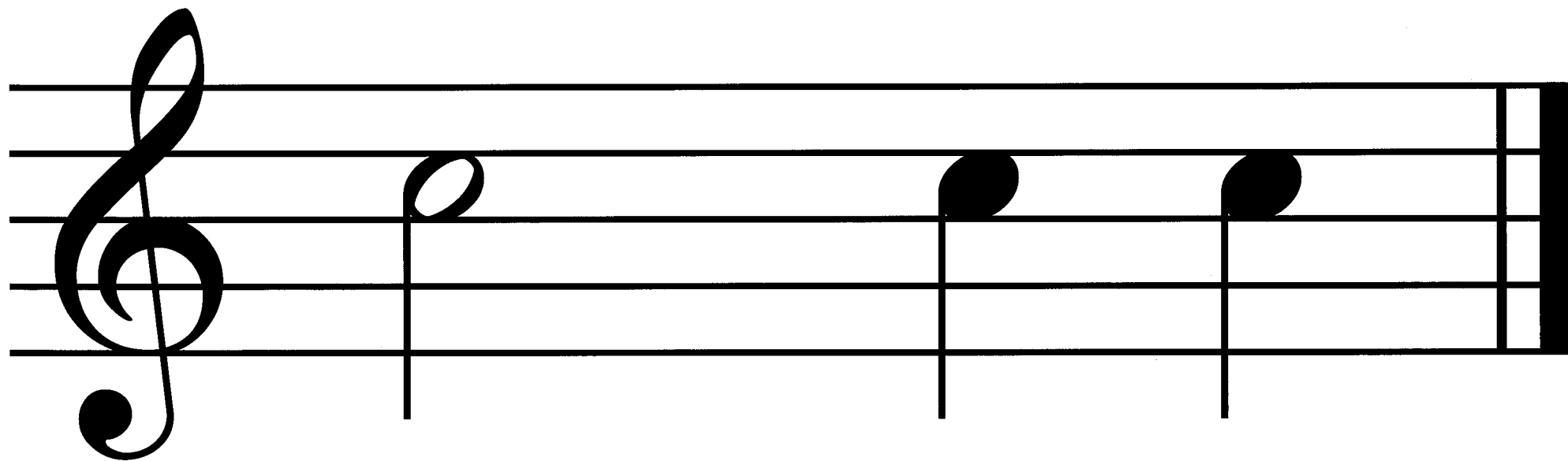


カ - ○

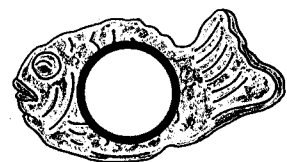
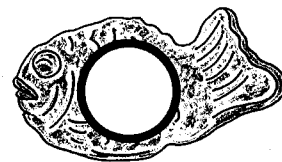
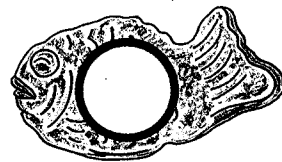
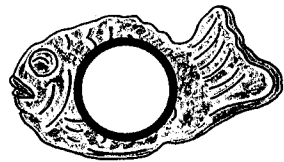
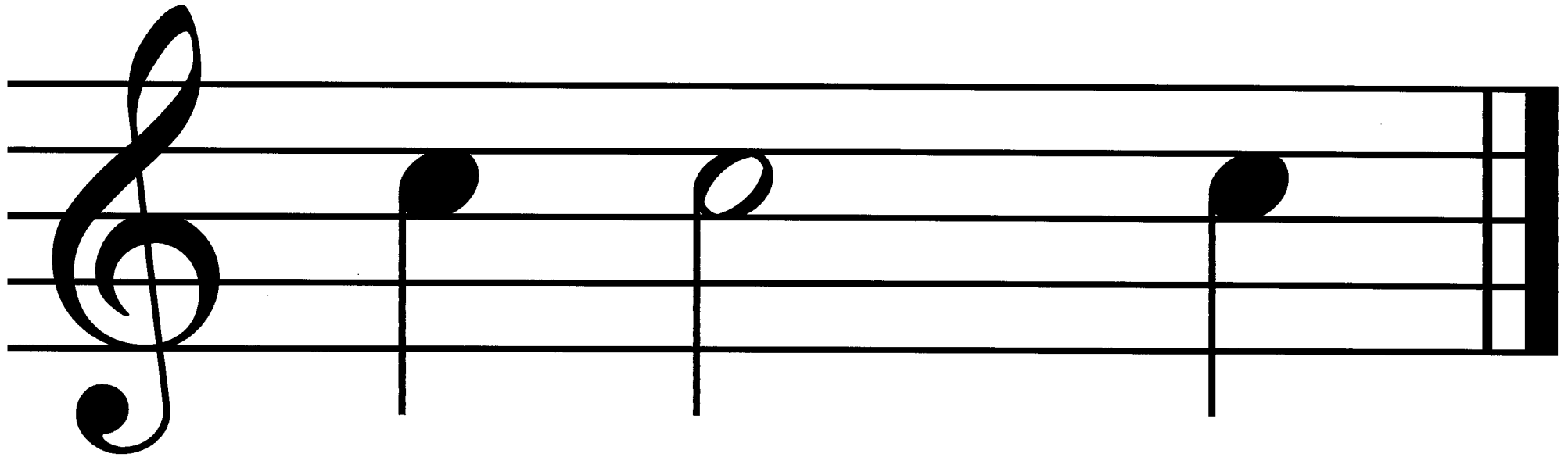
12. ドをかきましょう



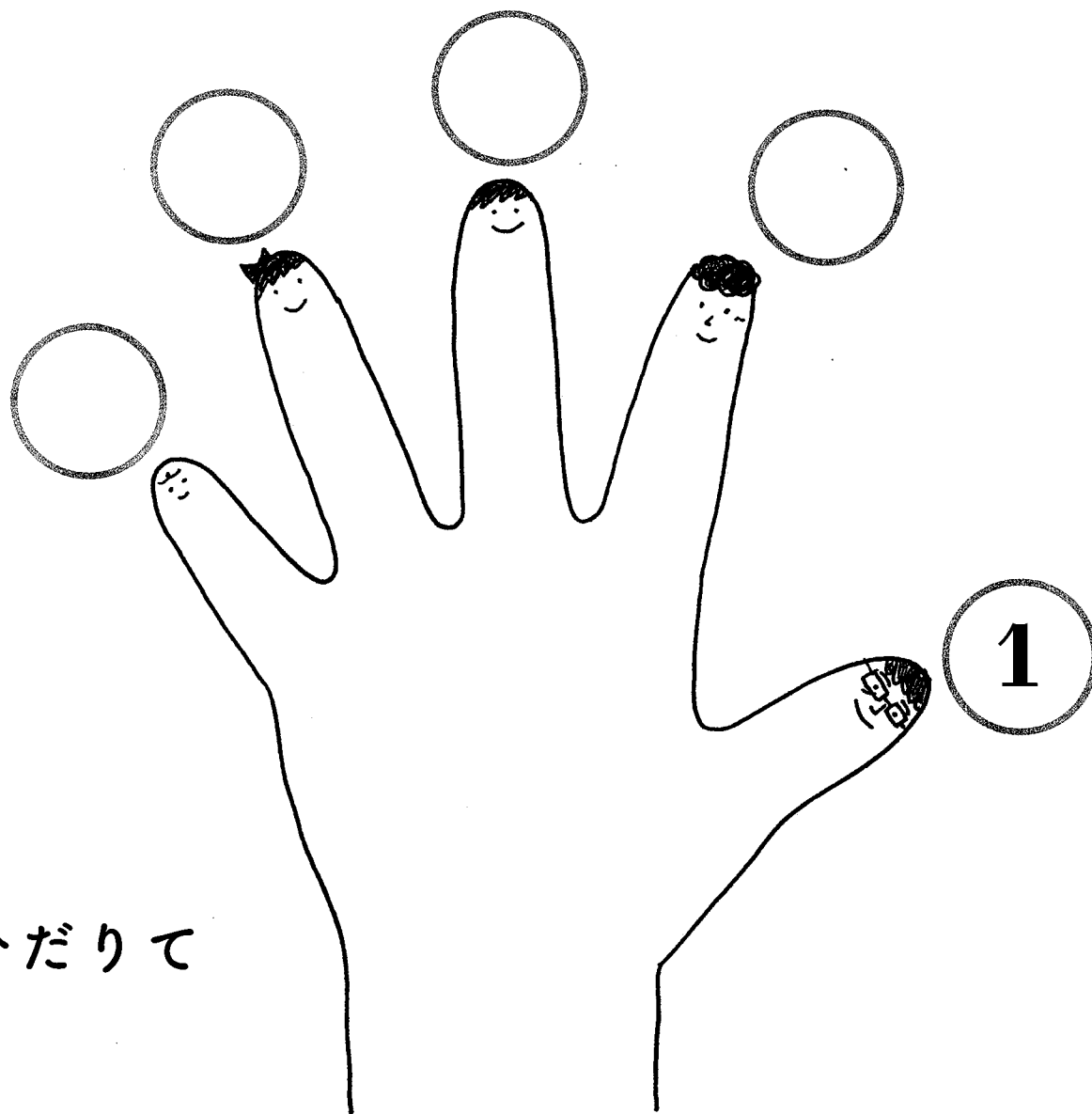
13. ドのおけいこ ①



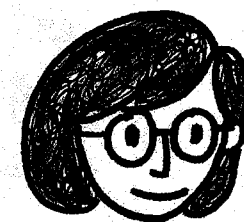
14. ドのおけいこ ②



15. ゆびばんごうをおぼえよう

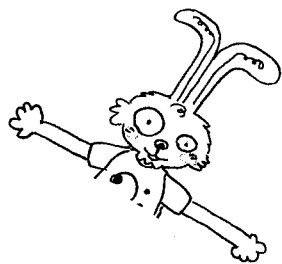


ひだりて



ゆびには
ばんごうがあるよ!





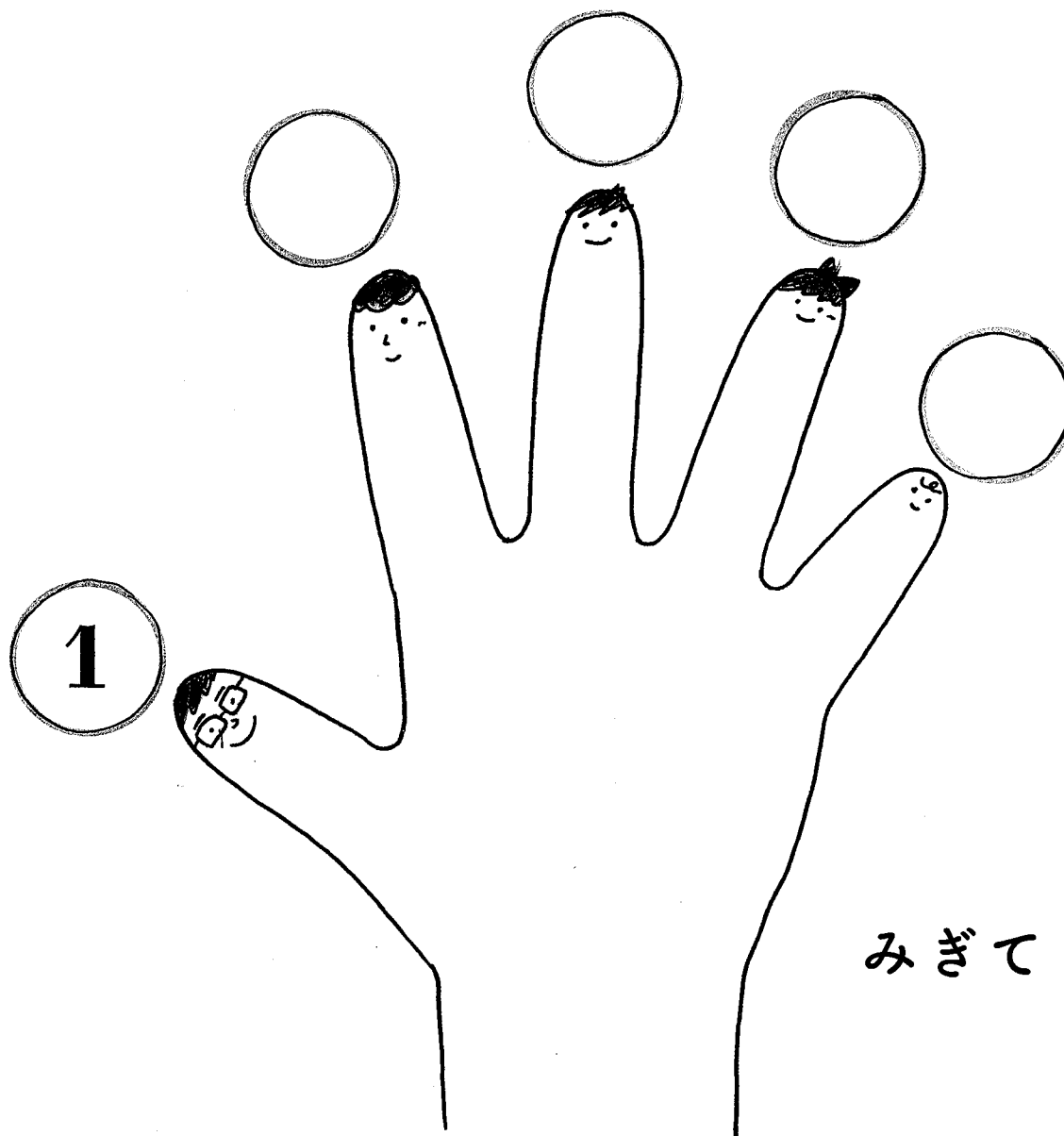
おとうさんゆびは？

おかあさんゆびは？

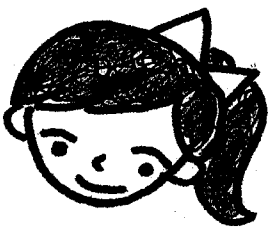
おにいさんゆびは？

おねえさんゆびは？

あかちゃんゆびは？

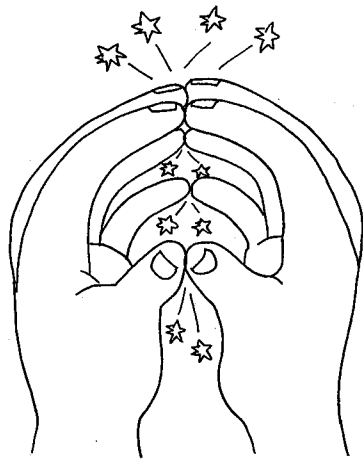


みぎて

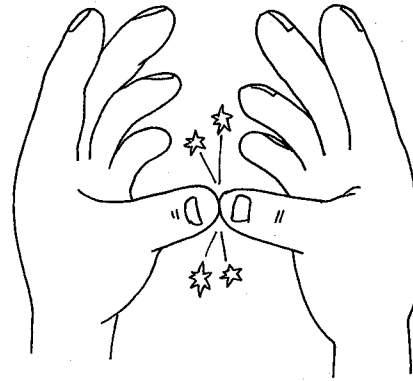
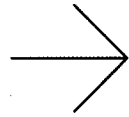


16. ゆびばんごうのうた

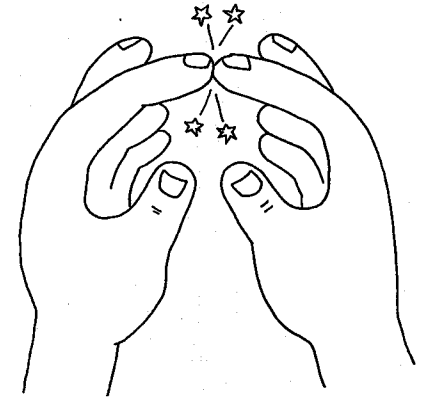
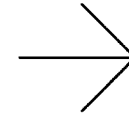
ゆびのかぞくは なんにん



1-2-3-4-5



1



2

ごにん

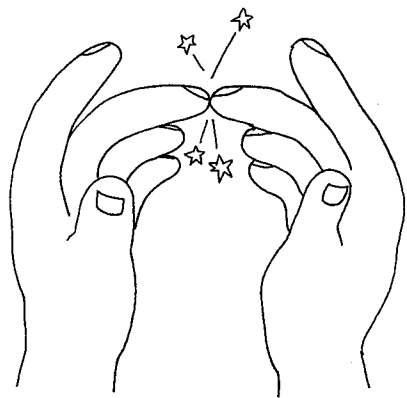
とーんととーん

おとうさんゆびはどおれ

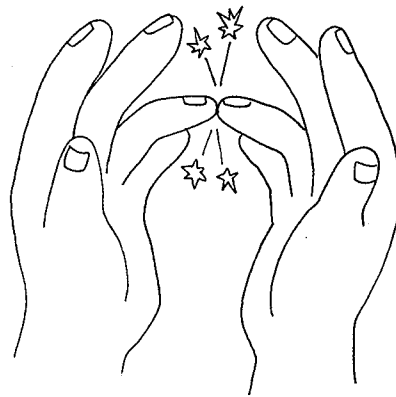
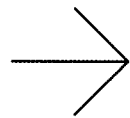
とーんとんとーん いちのゆび

おかあさんゆびはどおれ

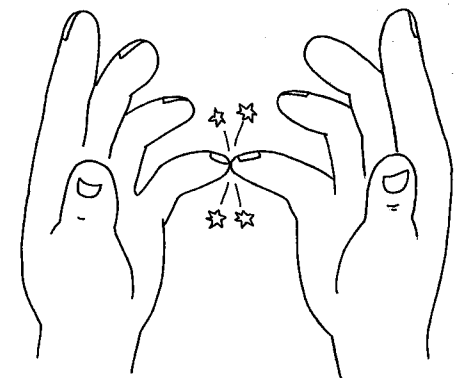
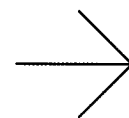
とーんとんとーん にーのゆび



3



4



5

おにいさんゆびはどおれ

とーんとんとーん さんのゆび

おねえさんゆびはどおれ

とーんとんとーん よんのゆび

あかちゃんゆびはどおれ

とーんとんとーん ごーのゆび

17. おとのおなまえ

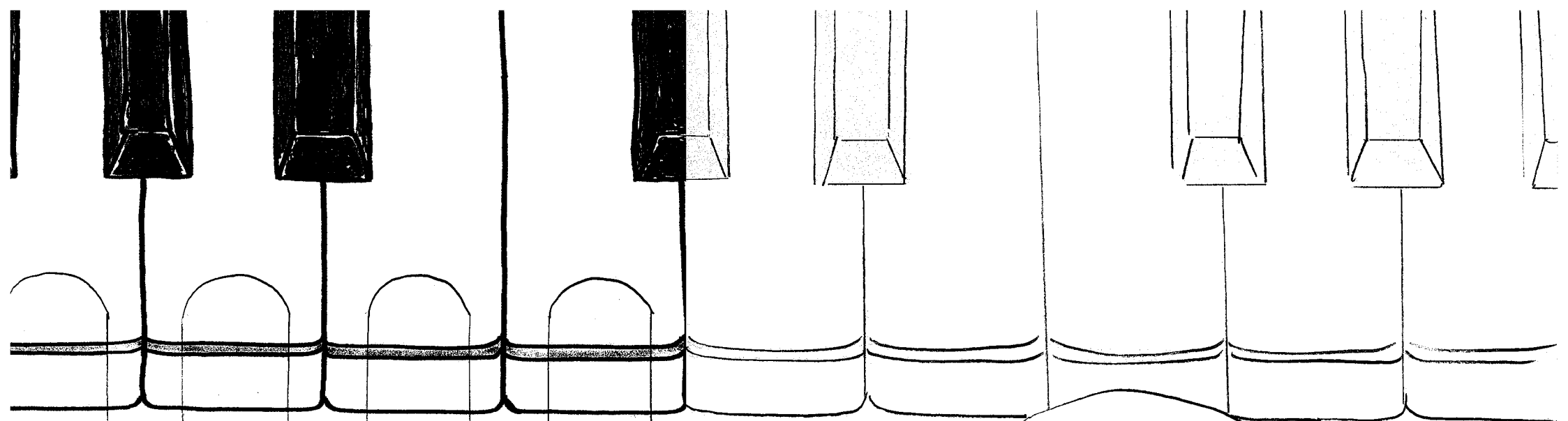
1

2

3

1

A musical score for the song 'Otto no Namae'. It features a treble clef on a five-line staff. The melody is written as a sequence of four quarter notes: G4, A4, B4, and C5. The notes are positioned on the second, third, fourth, and fifth lines of the staff respectively. Below the staff, there are four vertical stems, each topped with a semi-circular arch. The first stem has the number '1' written below it, corresponding to the first finger. The second stem has the number '2' below it, corresponding to the second finger. The third stem has the number '3' below it, corresponding to the third finger. The fourth stem has the number '1' below it, corresponding to the first finger. Above the staff, there are four vertical stems, each topped with a semi-circular arch. The first stem has the number '1' written below it, corresponding to the first finger. The second stem has the number '2' below it, corresponding to the second finger. The third stem has the number '3' below it, corresponding to the third finger. The fourth stem has the number '1' below it, corresponding to the first finger. The top of the page shows a partial view of a piano keyboard with keys and hammers.

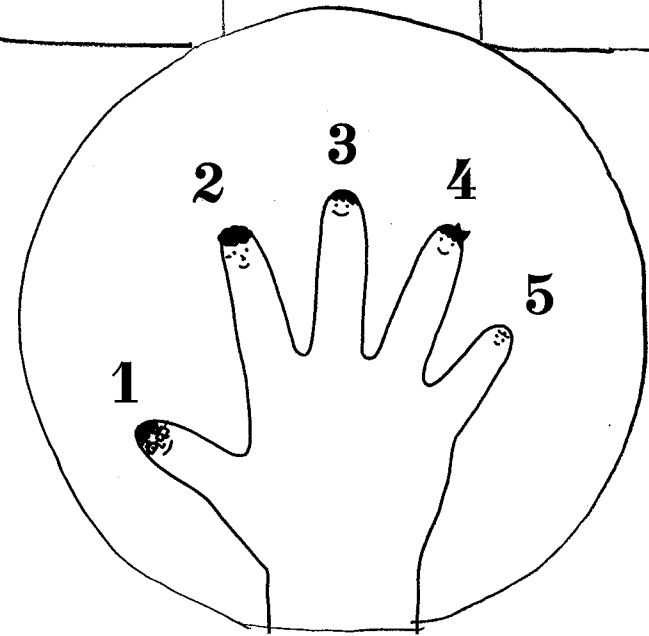
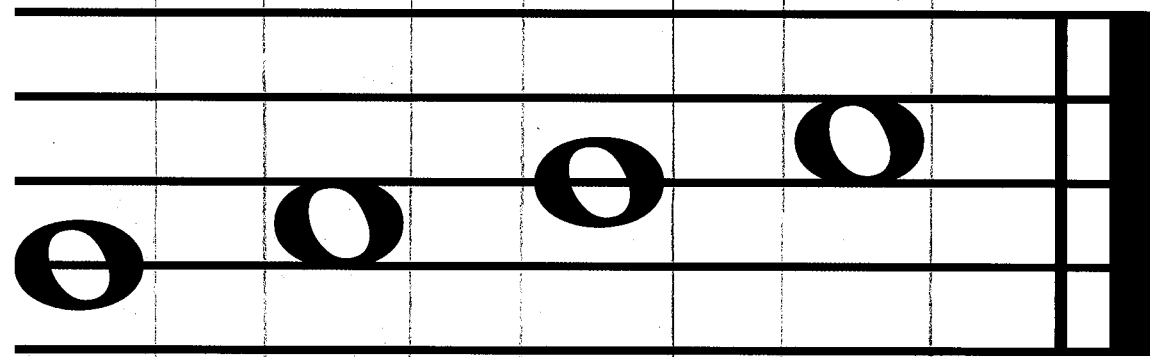


2

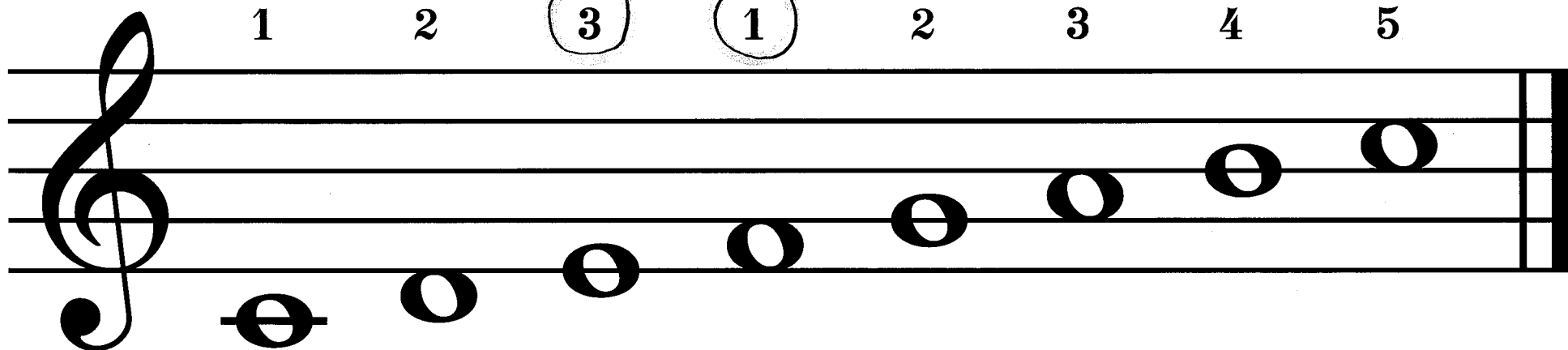
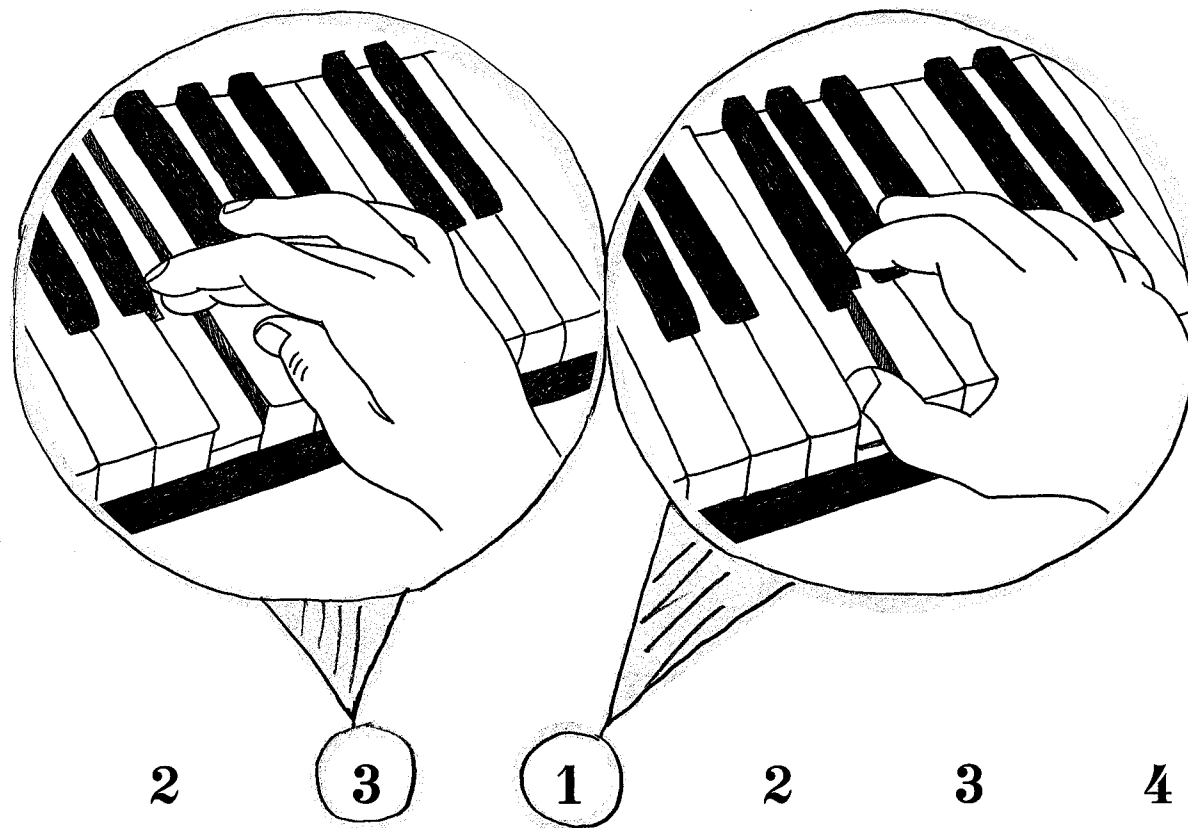
3

4

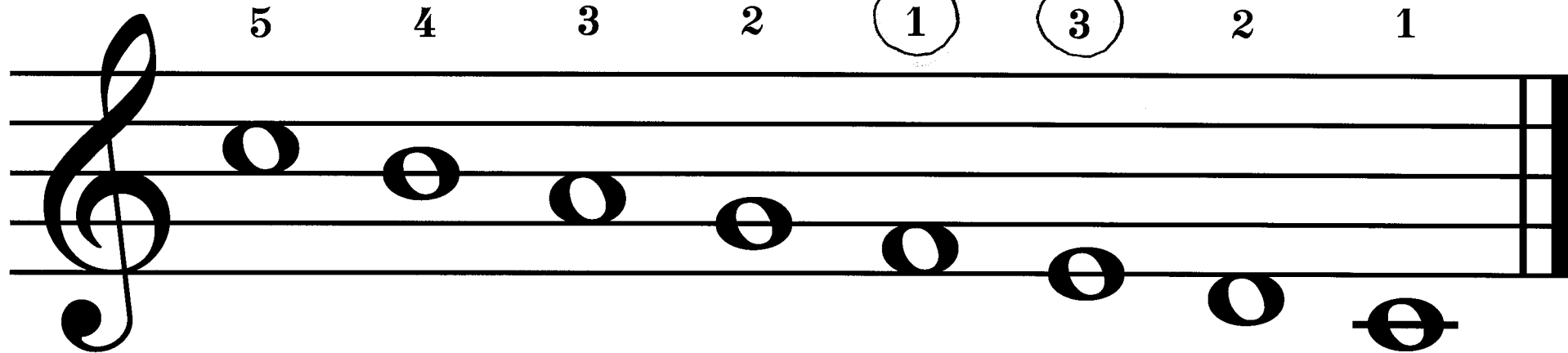
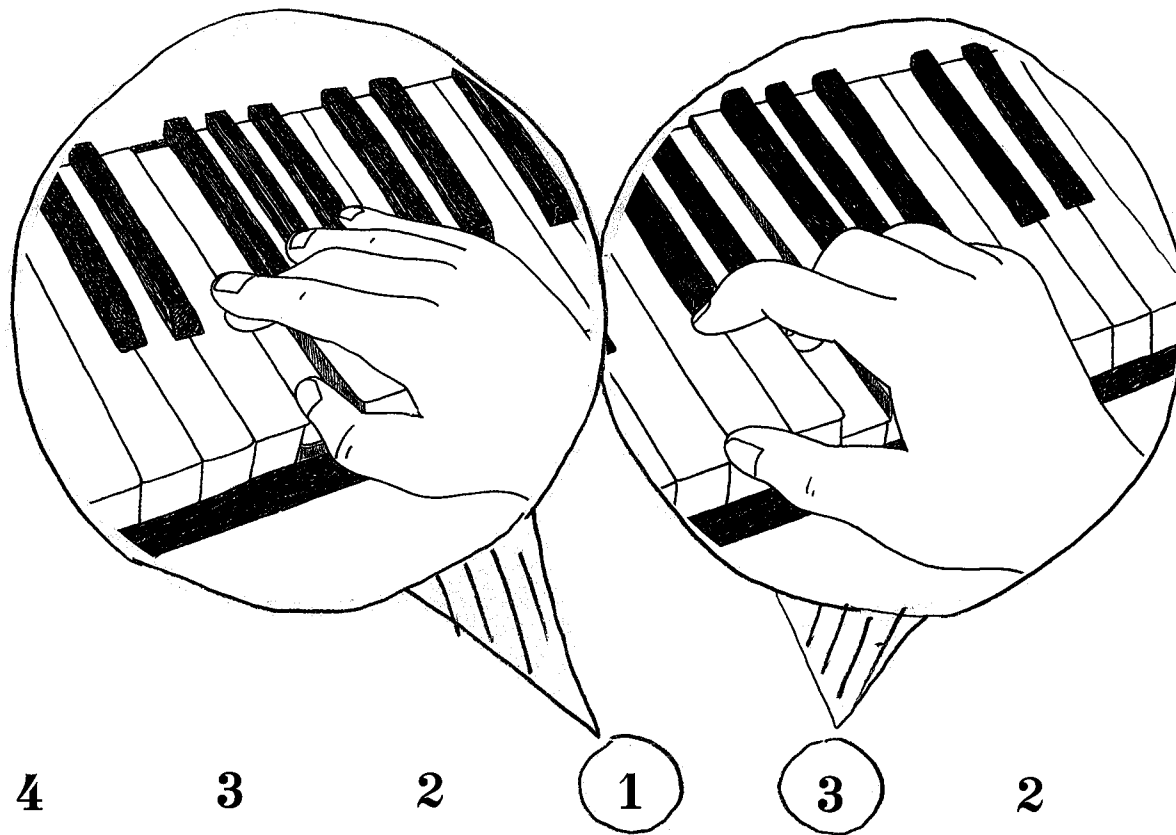
5



18. ゆびくぐり



19. ゆびごえ



20. のぼって おりよう ドレミファソラ

なぞってみよう!

1 2 3 1 2 3

ド

なぞってみよう!

3 2 1 3 2 1

ラ

21. おりてのぼろう ドレミファソラ

なぞってみよう!

1 3

ラ ○ ○ ○ ○ ○

なぞってみよう!

3 1

ド ○ ○ ○ ○ ○

22. ドレミファソラのおけいこ①

1 2 3 1 2 3 2

A musical staff in treble clef with a key signature of one flat (Bb). The notes are: D4 (quarter), E4 (quarter), F4 (quarter), G4 (quarter), A4 (quarter), Bb4 (quarter), A4 (quarter), G4 (quarter). Fingerings are indicated above the notes: 1, 2, 3, 1, 2, 3, 2.

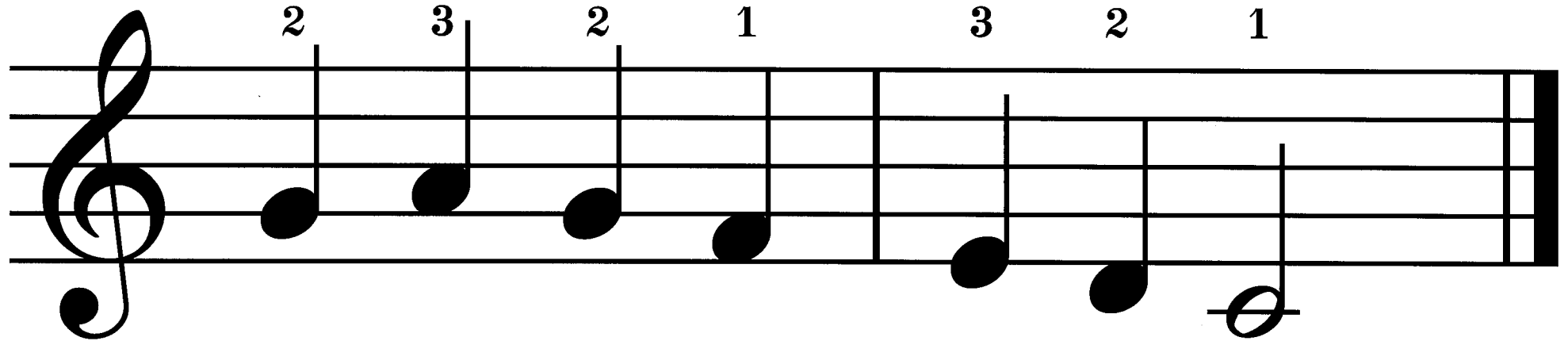
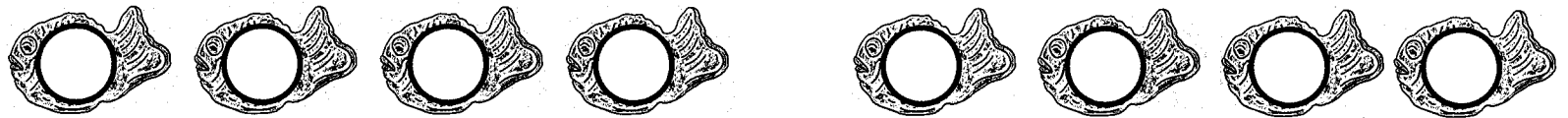
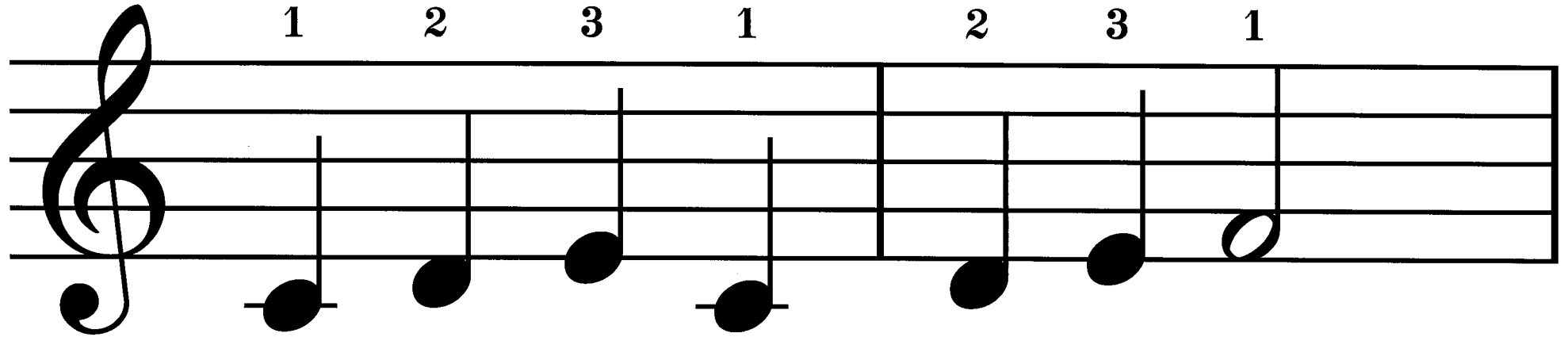


3 3 2 1 3 2 1

A musical staff in treble clef with a key signature of one flat (Bb). The notes are: D4 (quarter), E4 (quarter), F4 (quarter), G4 (quarter), A4 (quarter), Bb4 (quarter), A4 (quarter), G4 (quarter). Fingerings are indicated above the notes: 3, 3, 2, 1, 3, 2, 1.



23. ドレミファソラのおけいこ②



24. のぼって おりよう ドレミファソラシ

なぞってみよう!

1 2 3 1 2 3 4

ド

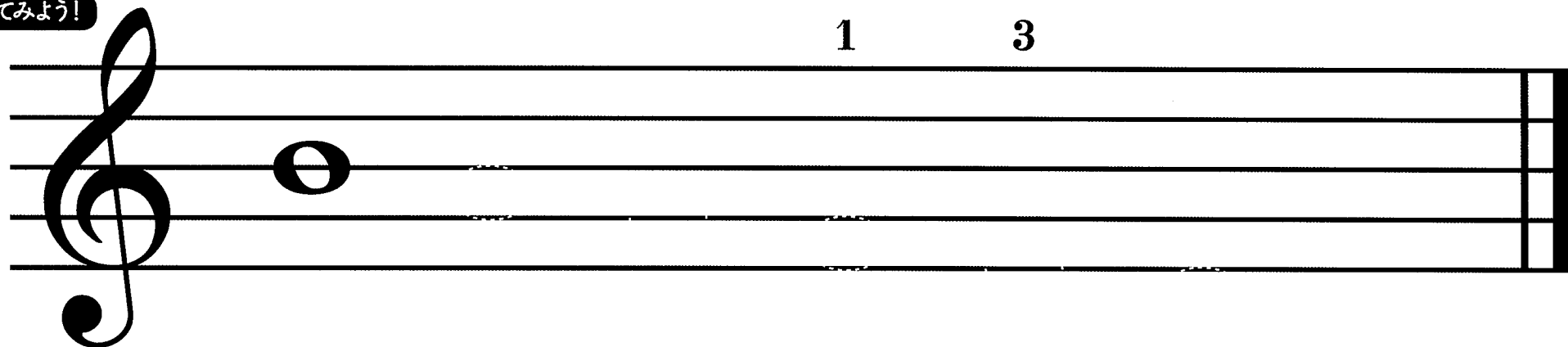
なぞってみよう!

4 3 2 1 3 2 1

シ

25. おりてのぼろう ドレミファソラシ

なぞってみよう!

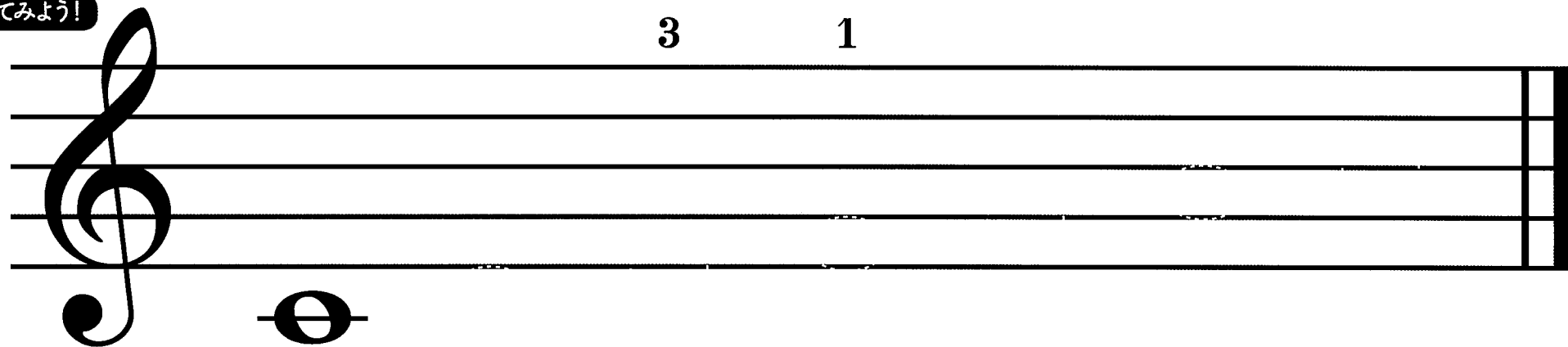


1

3



なぞってみよう!

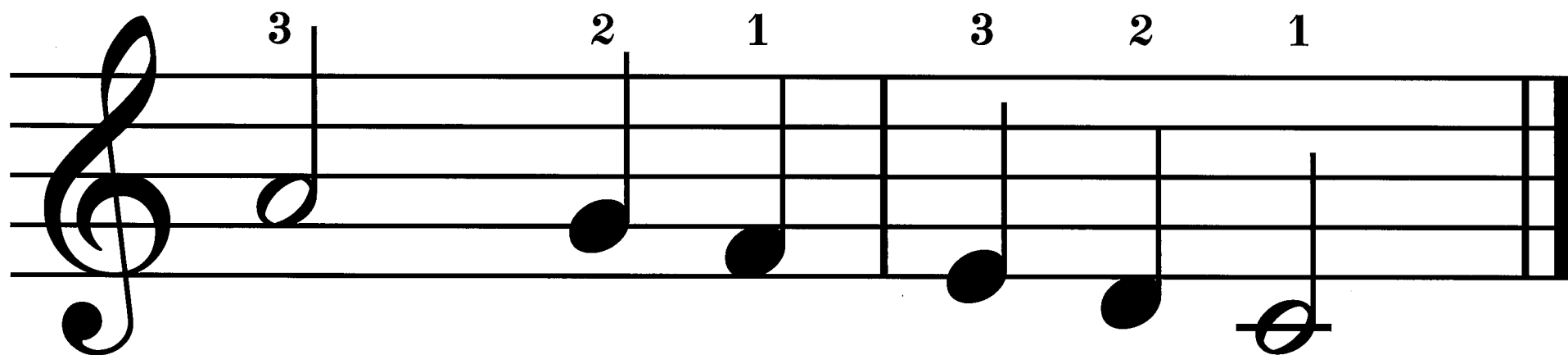
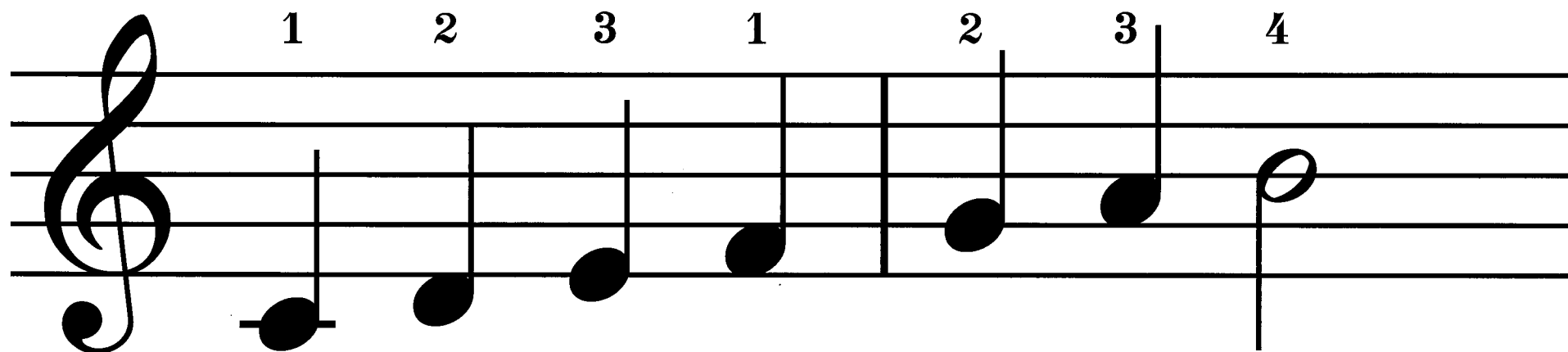


3

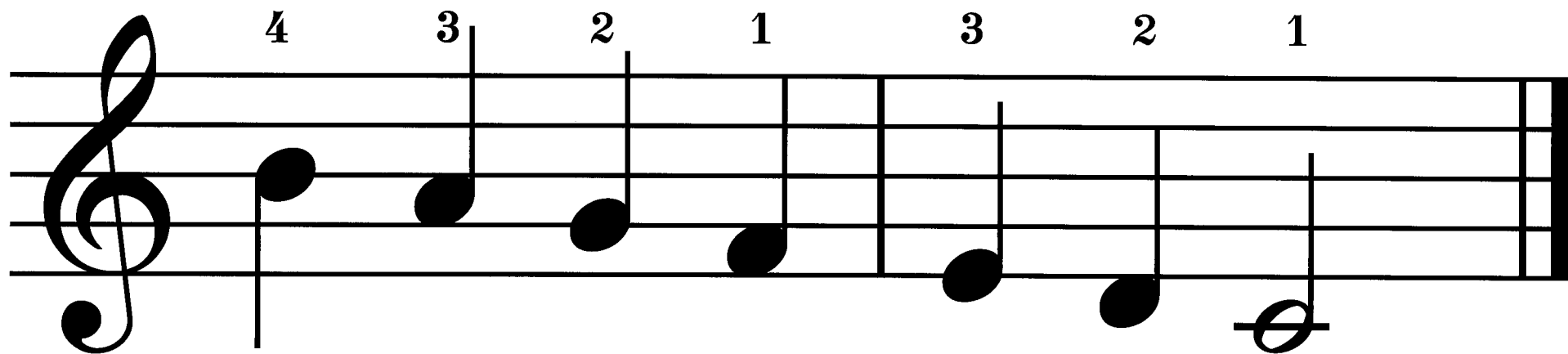
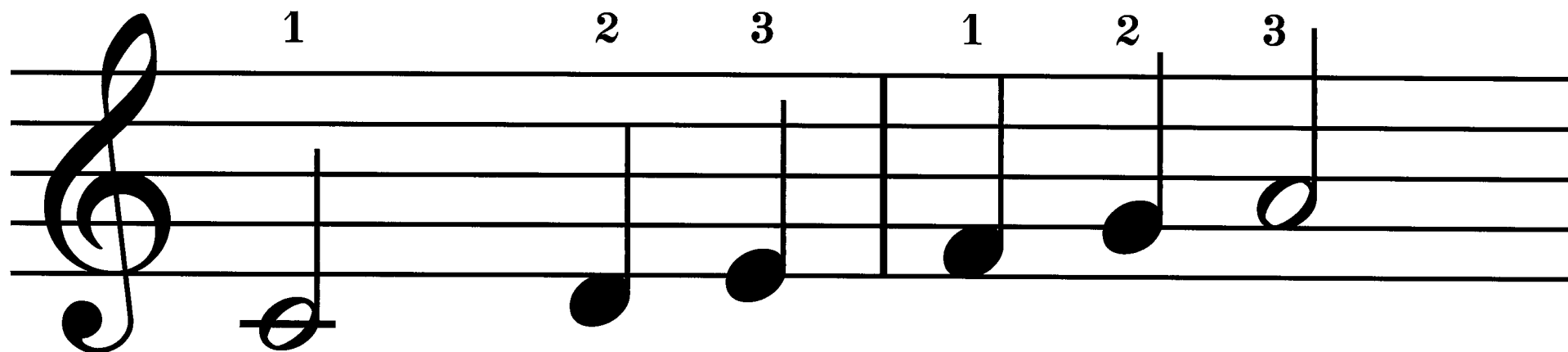
1



26. ドレミファソラシのおけいこ①



27. ドレミファソラシのおけいこ②



28. のぼって おりよう ドレミファソラシド

なぞってみよう!

1 2 3 1 2 3 4 5

ド

なぞってみよう!

5 4 3 2 1 3 2 1

ド

29. おりてのぼろう ドレミファソラシド

なぞってみよう!

1 3

A musical staff with a treble clef. The first note is a solid black circle on the second line. The following seven notes are dashed circles on the second, third, fourth, fifth, sixth, seventh, and eighth lines. Below the staff are eight circles: the first contains the Japanese character 'ド' (Do), and the others are empty for tracing.

なぞってみよう!

3 1

A musical staff with a treble clef. The first note is a solid black circle on the second line. The following seven notes are dashed circles on the second, third, fourth, fifth, sixth, seventh, and eighth lines. Below the staff are eight circles: the first contains the Japanese character 'ド' (Do), and the others are empty for tracing.

30. ドレミファソラシドのおけいこ①

1 2 3 1 2 3 4 5

A musical staff in treble clef showing the first line of the exercise. It consists of two measures. The first measure contains three quarter notes: D4 (finger 1), E4 (finger 2), and F4 (finger 3). The second measure contains five quarter notes: G4 (finger 1), A4 (finger 2), B4 (finger 3), C5 (finger 4), and D5 (finger 5).



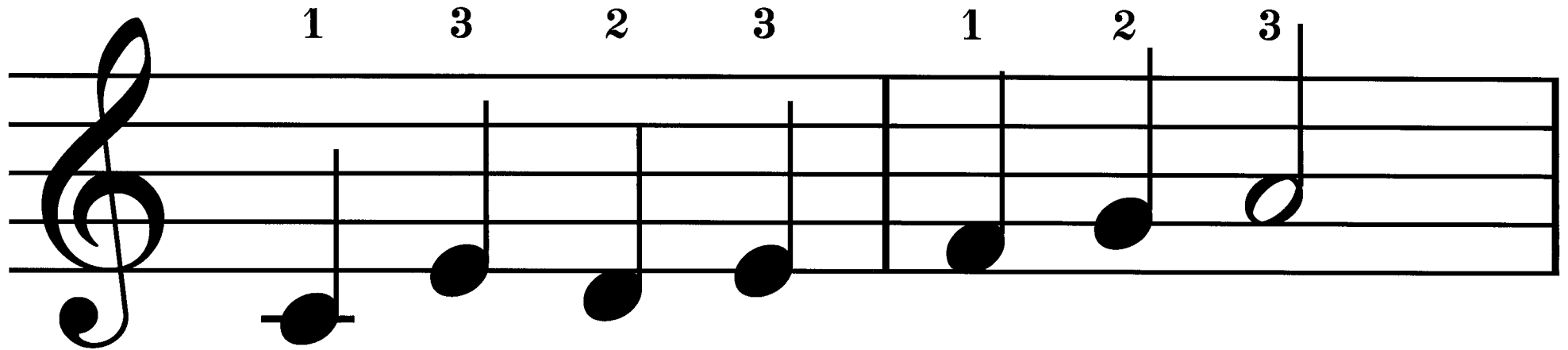
4 3 2 1 3 2 1

A musical staff in treble clef showing the second line of the exercise. It consists of two measures. The first measure contains four quarter notes: D5 (finger 4), C5 (finger 3), B4 (finger 2), and A4 (finger 1). The second measure contains three quarter notes: G4 (finger 3), F4 (finger 2), and E4 (finger 1), followed by a whole rest.



31. ドレミファソラシドのおけいこ②

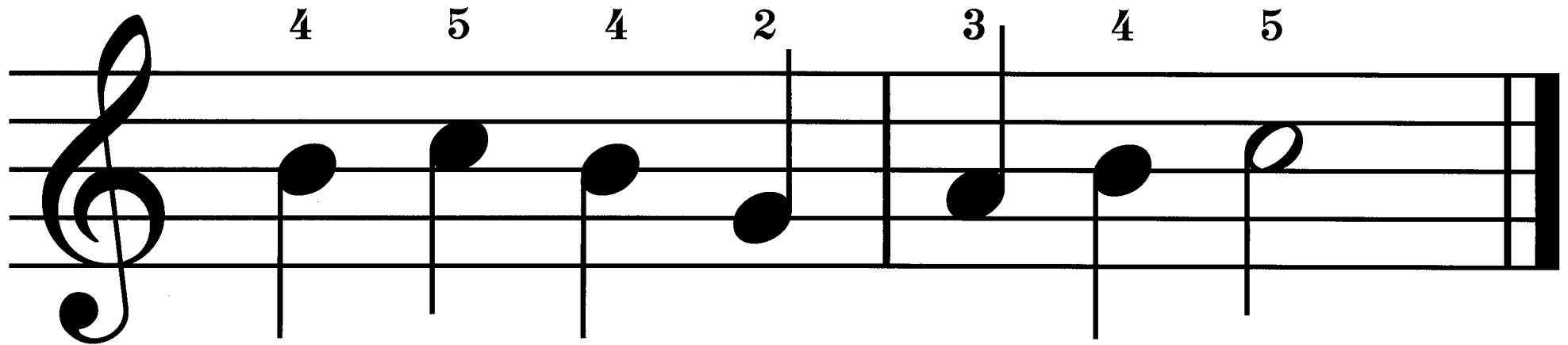
1 3 2 3 1 2 3



A musical staff in treble clef showing a sequence of notes: D4, F4, A4, C5, D4, F4, A4. The notes are quarter notes. Above the staff, the numbers 1, 3, 2, 3, 1, 2, 3 are placed above each corresponding note. The staff is divided into two measures by a bar line.



4 5 4 2 3 4 5



A musical staff in treble clef showing a sequence of notes: F4, A4, C5, D5, F4, A4, C5. The notes are quarter notes. Above the staff, the numbers 4, 5, 4, 2, 3, 4, 5 are placed above each corresponding note. The staff is divided into two measures by a bar line.

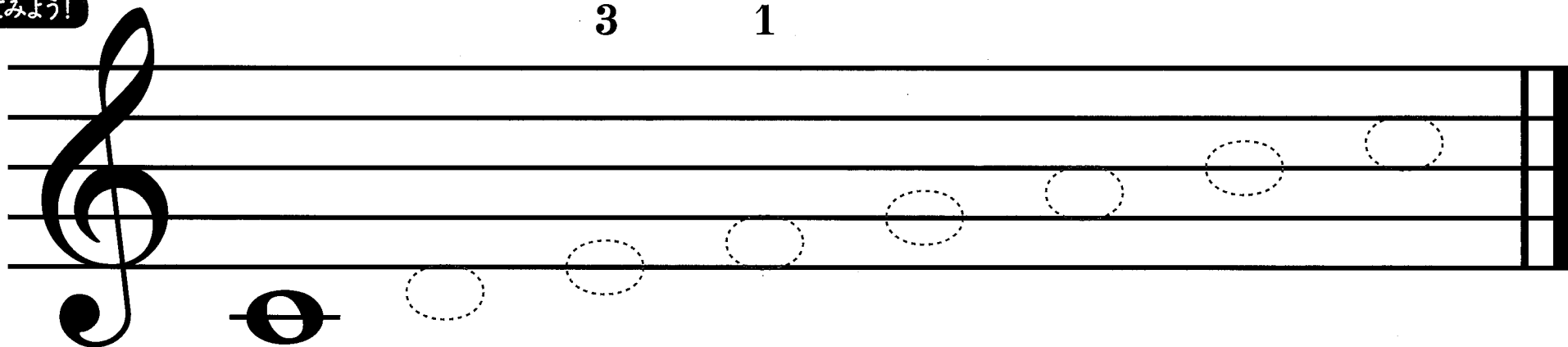


32. おんかいをかいてみよう (ぜんおんぷ)

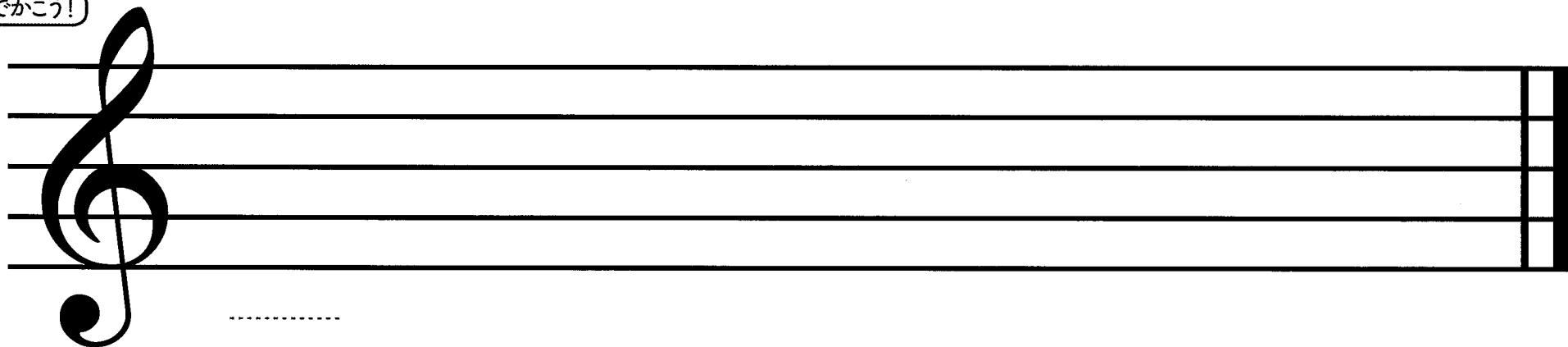
なぞってみよう!

3

1



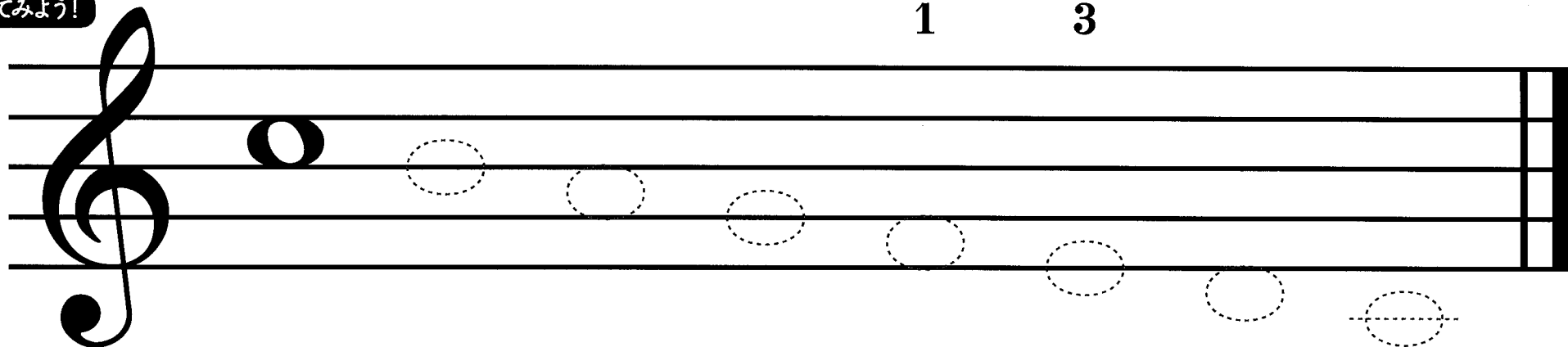
じぶんでかこう!



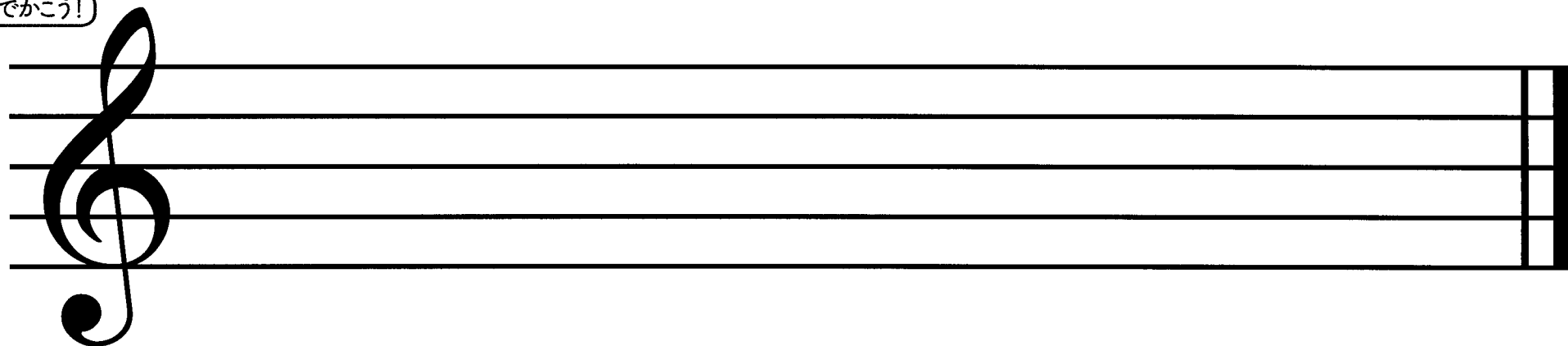
なぞってみよう!

1

3



じぶんでかこう!



33. おんかいをかいてみよう (にぶおんぷ)

なぞってみよう!

3 1

なぞってみよう!

1 3

34. おんかいをかいてみよう (しぶおんぷ)

なぞってみよう!

3 1

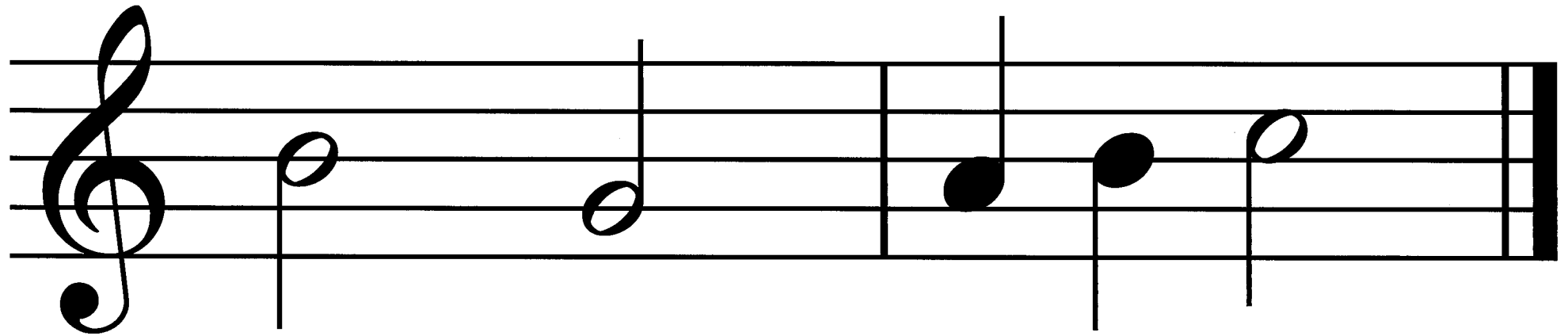
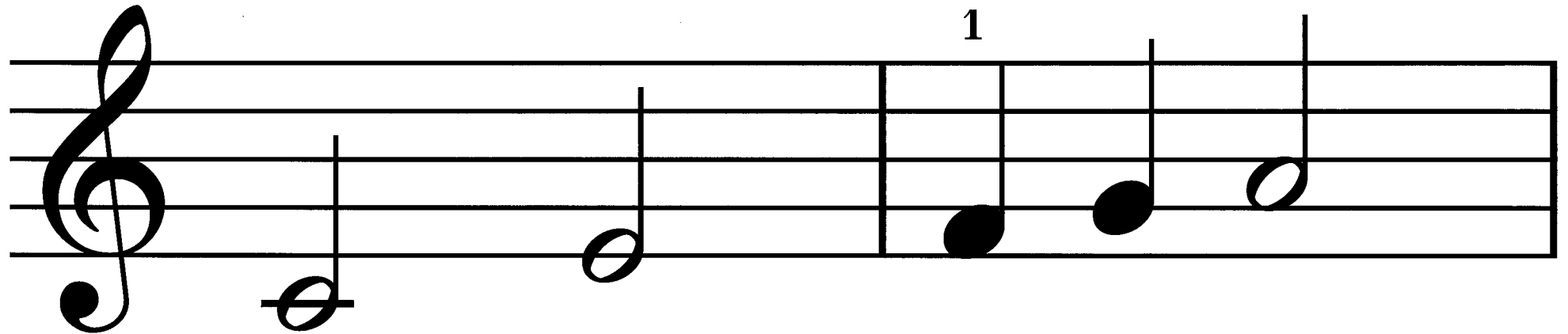
A musical staff with a treble clef. The first note is a solid black quarter note on the second line (G4). The following seven notes are dashed outlines of quarter notes on the second, third, fourth, and fifth lines, and then on the first, second, and third lines. Above the staff, the number '3' is positioned above the first three dashed notes, and the number '1' is positioned above the last four dashed notes. Below the staff, there are eight circles. The first circle contains the Japanese character 'ド' (do), and the other seven are empty.

なぞってみよう!

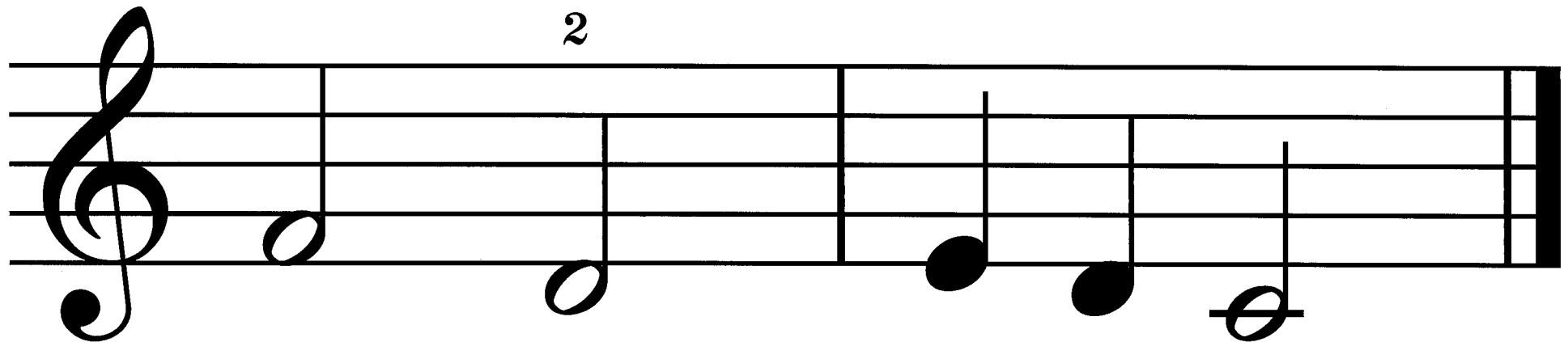
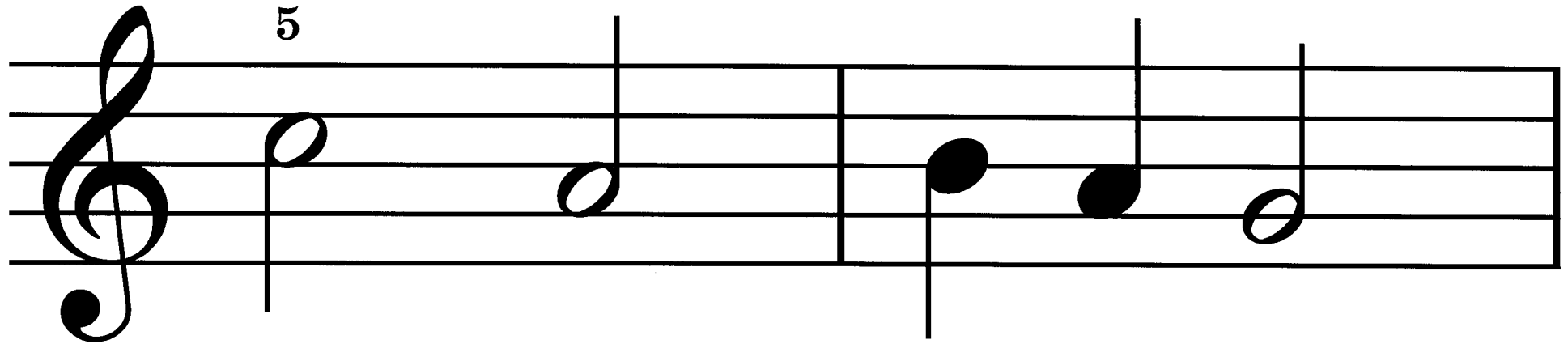
1 3

A musical staff with a treble clef. The first note is a dashed outline of a quarter note on the first line (F4). The following seven notes are dashed outlines of quarter notes on the second, third, fourth, and fifth lines, and then on the first, second, and third lines. Above the staff, the number '1' is positioned above the first four dashed notes, and the number '3' is positioned above the last three dashed notes. Below the staff, there are eight empty circles.

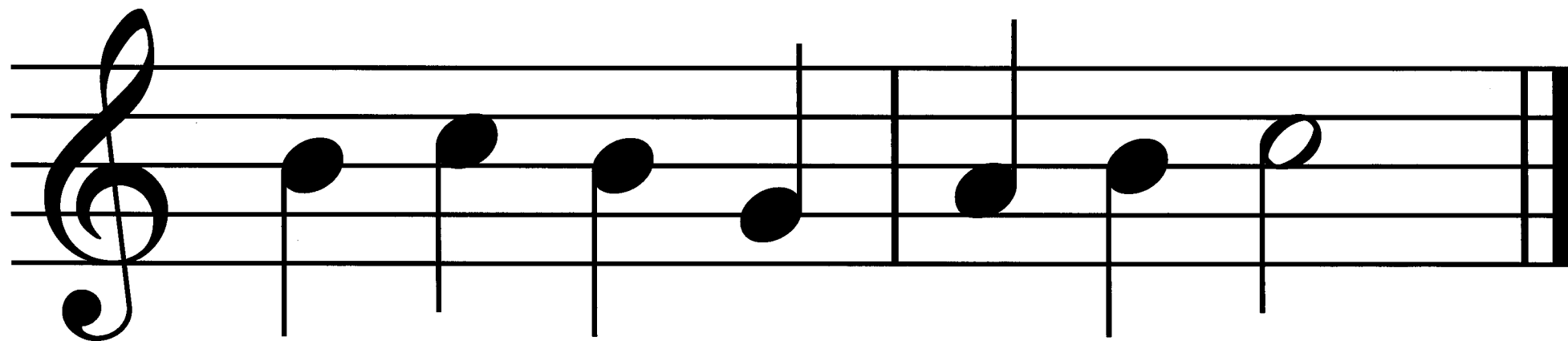
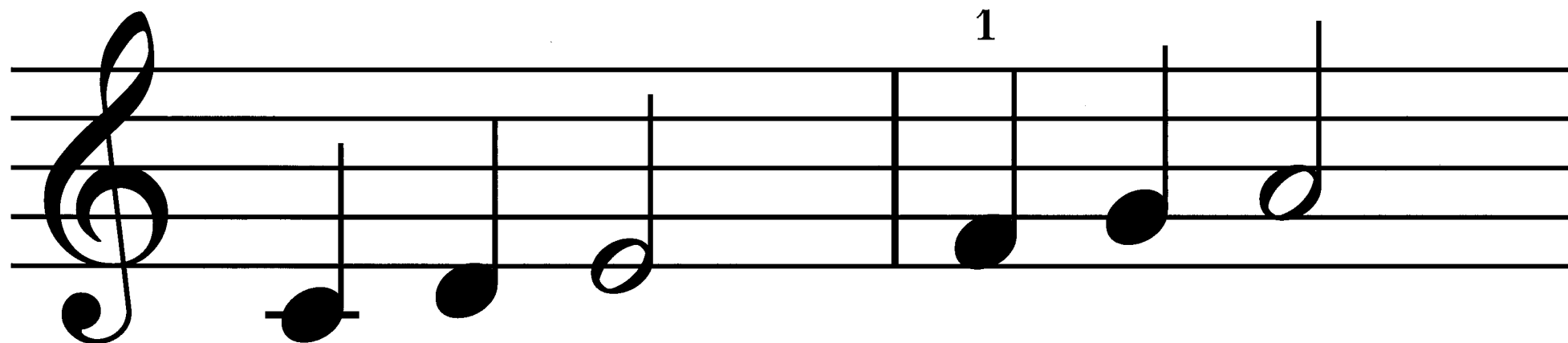
35. れんしゅう ①



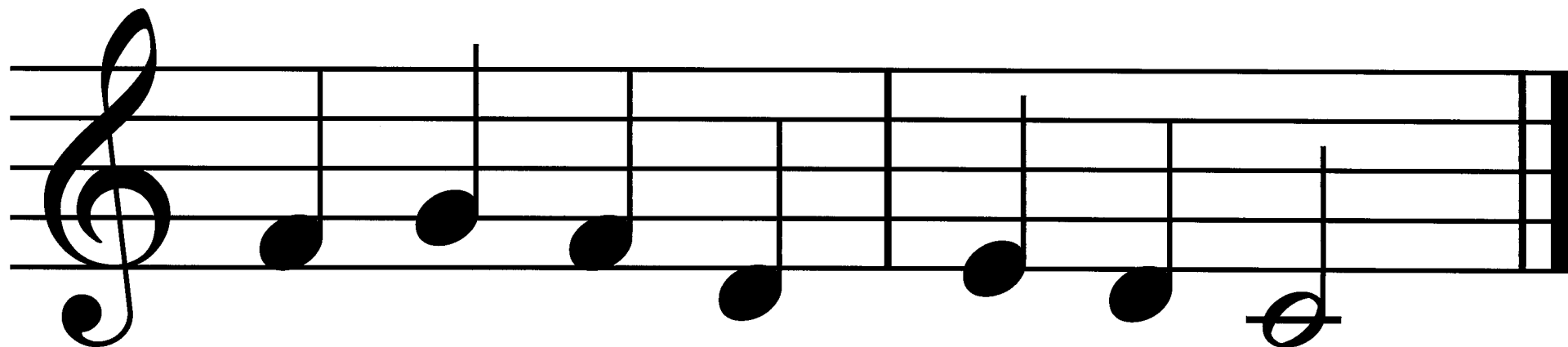
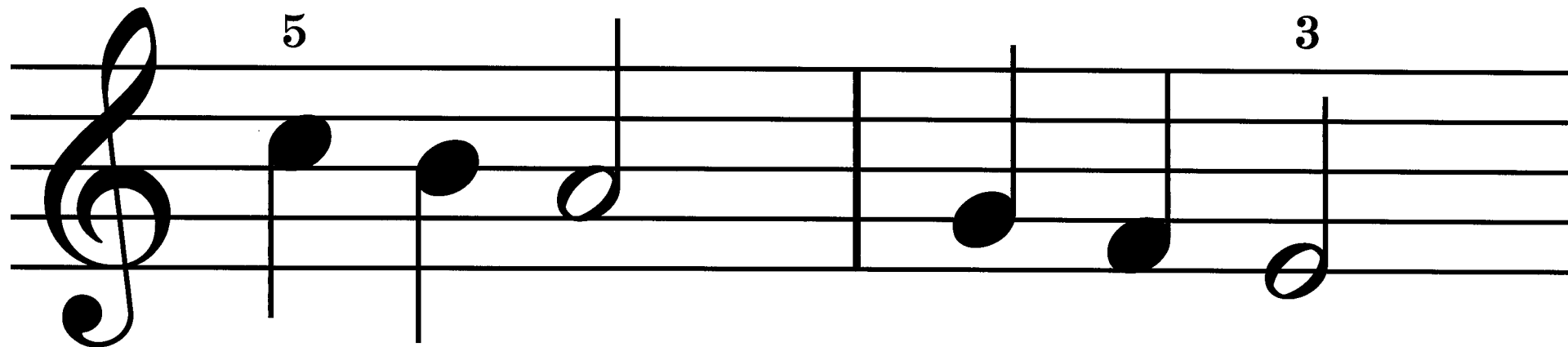
れんしゅう ②



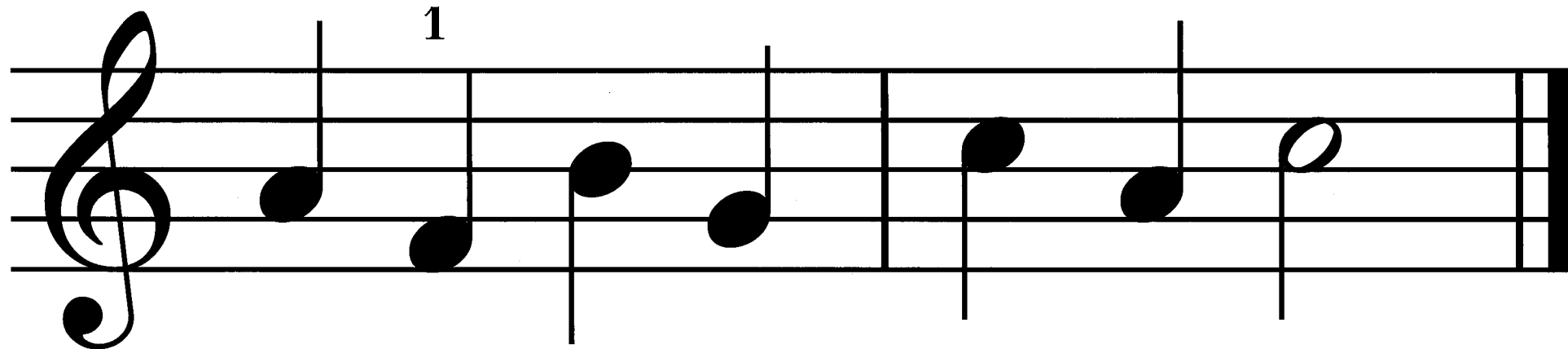
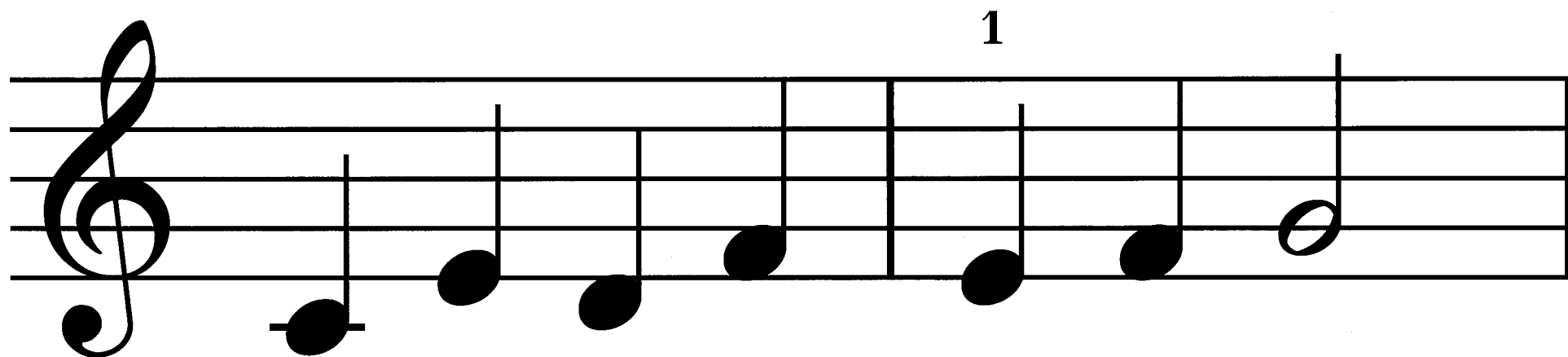
れんしゅう ③



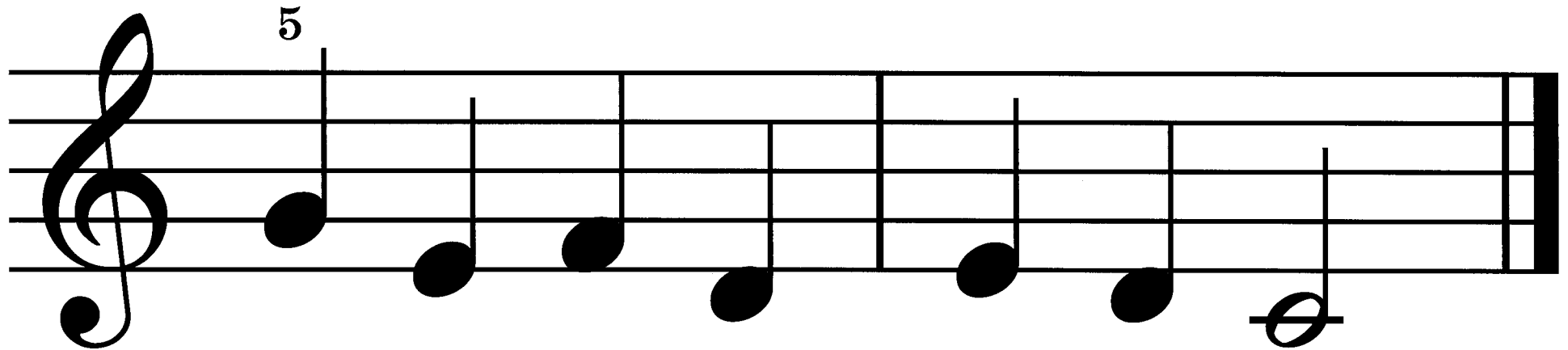
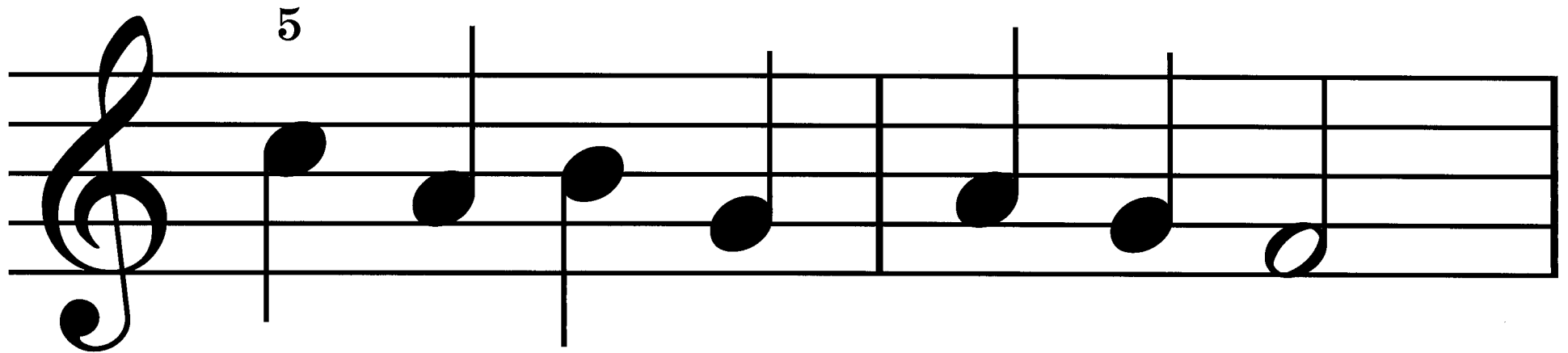
れんしゅう ④



れんしゅう ⑤ (ゆびうっし)



れんしゅう ⑥ (ゆびうっし)



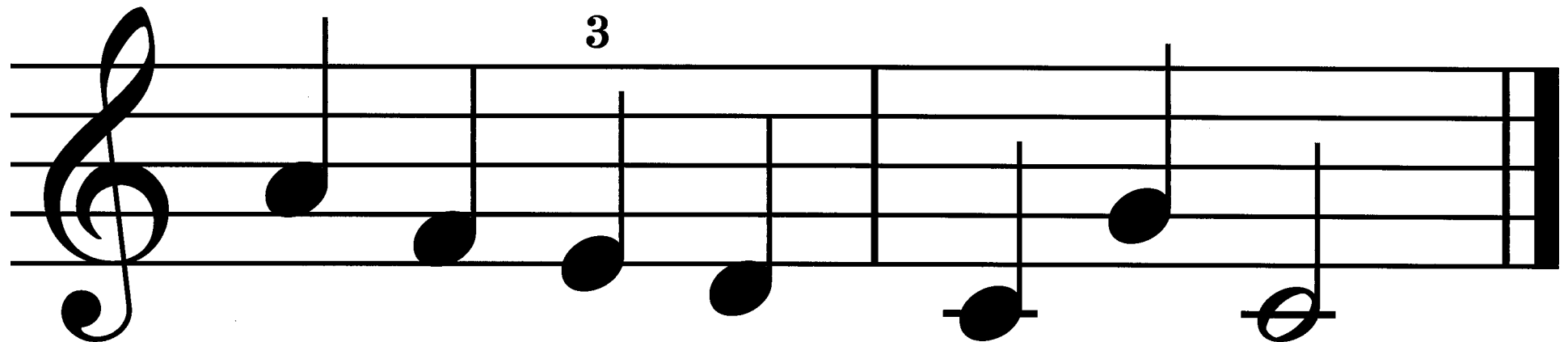
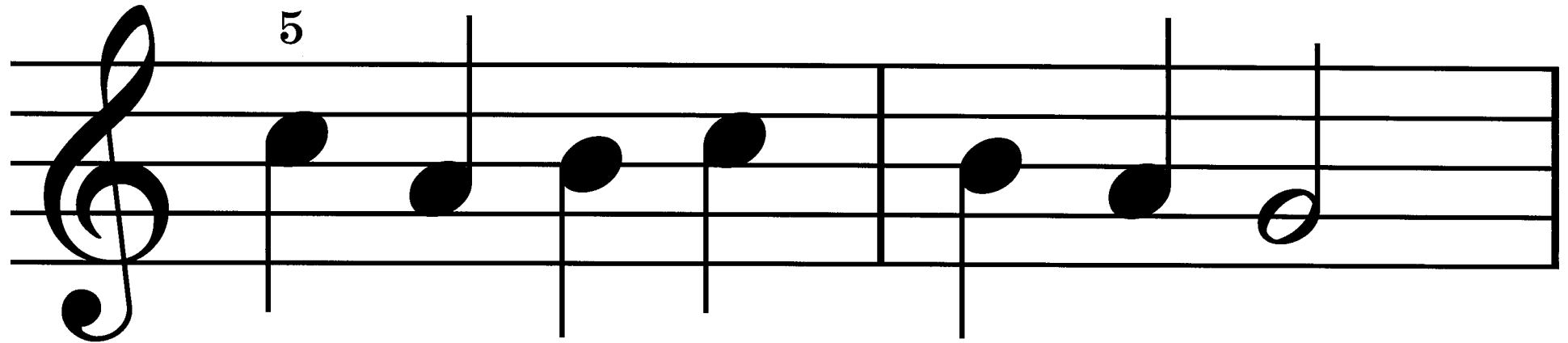
れんしゅう ⑦

1

A musical staff in treble clef with a key signature of one flat. The melody consists of the following notes: G4 (quarter), A4 (quarter), B4 (quarter), A4 (quarter), G4 (quarter), F4 (quarter), E4 (half). Below the staff, there are eight fish-shaped icons, each corresponding to a note: four under the first four notes and four under the last four notes.

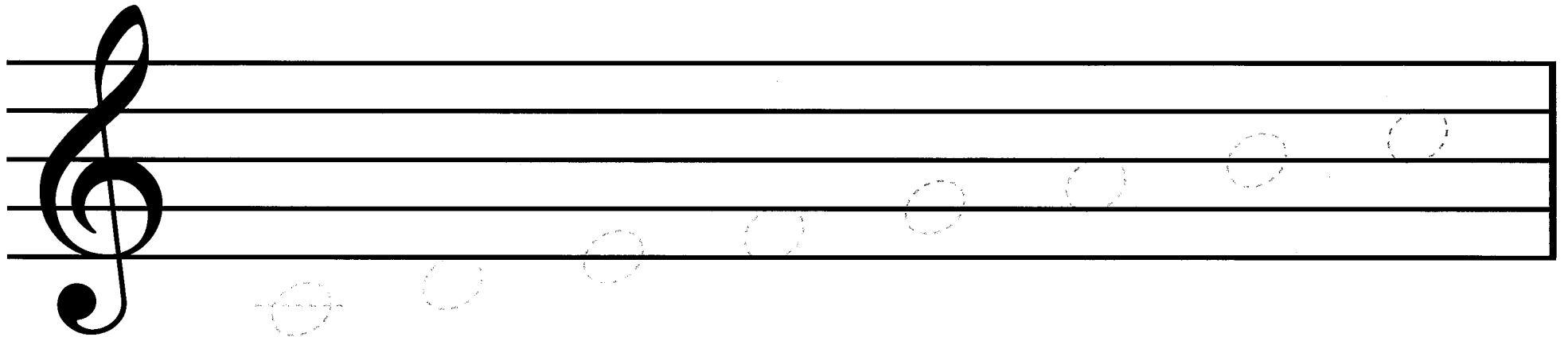
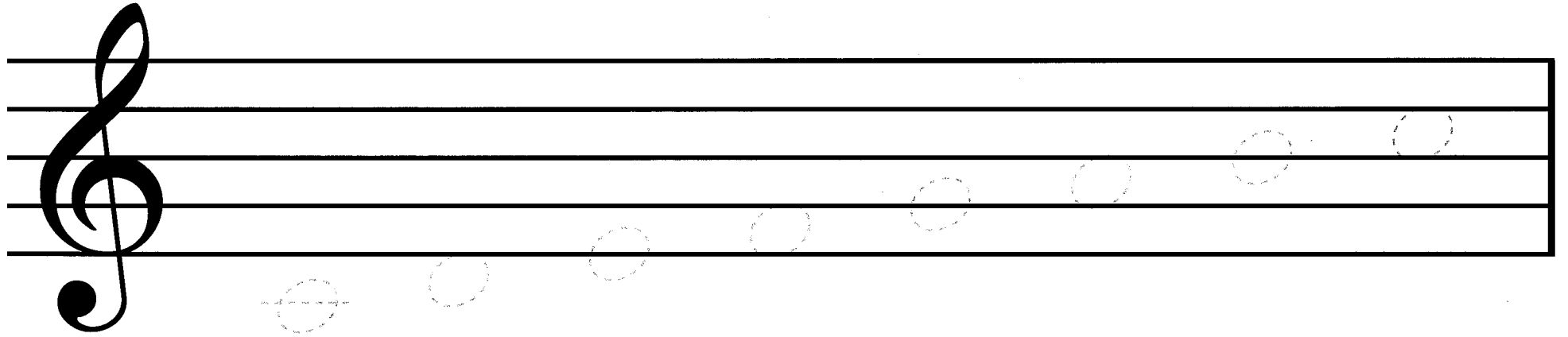
A musical staff in treble clef with a key signature of one flat. The melody consists of the following notes: G4 (quarter), A4 (quarter), B4 (quarter), A4 (quarter), G4 (quarter), F4 (quarter), E4 (half). Below the staff, there are eight fish-shaped icons, each corresponding to a note: four under the first four notes and four under the last four notes.

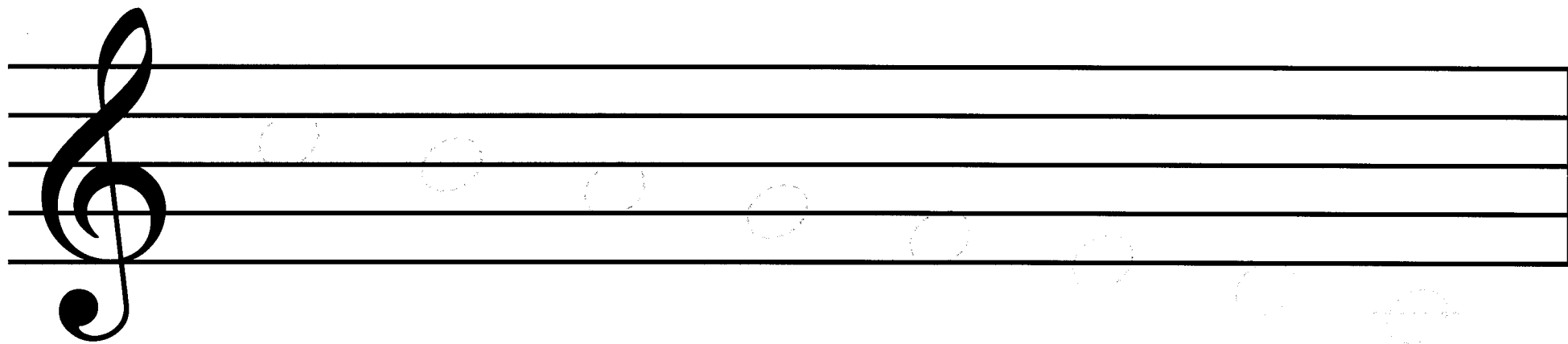
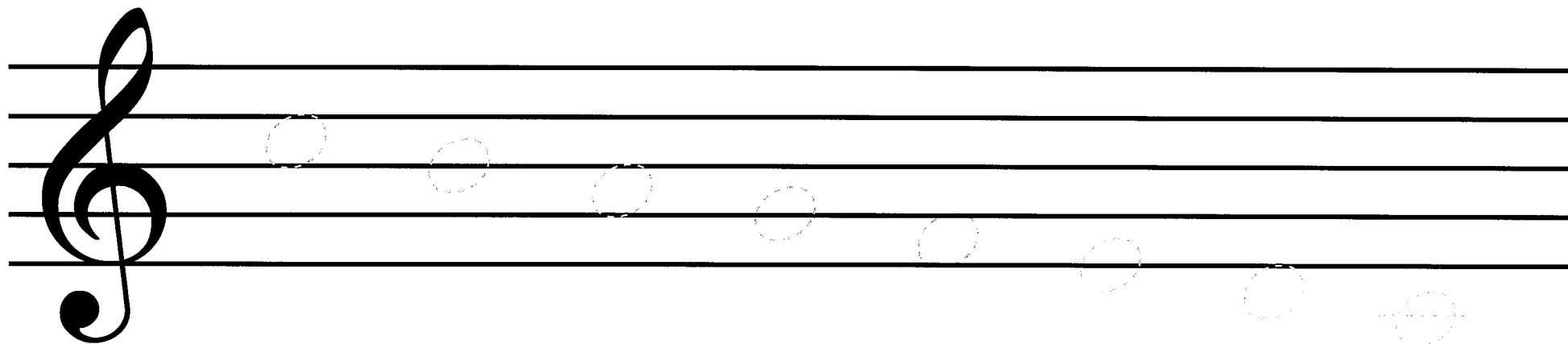
れんしゅう ⑧





おんぷにいろをぬってみよう







児玉 千賀子

Chikako Kodama

特定非営利活動法人アジェンダやまがた

代表理事

桐朋学園大学演奏学科音楽専攻卒業。山形市中心市街地活性化を目的に、2007年に団体設立。中心市街地にて指定障がい児通所支援事業所「音楽なかまプリモ」「音楽なかまアンジェリ」を運営し、障がい児を対象にした音楽を使った療育活動・音楽指導に力を注いでいる。

特定非営利活動法人アジェンダやまがた

〒990-0044 山形県山形市木の実町 2-7 ダイヤ 37 木の実町

電話：023-679-4045 メールアドレス：salon@ruby.plala.or.jp

ホームページ：<http://nanoka.info/>

こころと、^{みみ}耳をひらく

あふり〜れ だい3かん

2018年3月1日 第1刷発行

著者	児玉千賀子
監修	宮崎昭、春畑セロリ、福田りえ
発行者	特定非営利活動法人アジェンダやまがた
作曲	児玉千賀子、佐藤開生、春畑セロリ、福田りえ
編曲	佐藤開生、園畑貴之
イラスト	ささきちみ
デザイン	佐藤朝洋
印刷	株式会社大風印刷
